

Functional Anatomy of the Masking Level Difference, an fMRI Study

David S. Wack^{1,2,4*}, Jennifer L. Cox¹, Claudiu V. Schirda^{1,3}, Christopher R. Magnano¹, Joan E. Sussman⁴, Donald Henderson⁴, Robert F. Burkard⁵

1 Buffalo Neuroimaging Analysis Center, Dept. of Neurology, University at Buffalo, State University of New York at Buffalo, Buffalo, New York, United States of America, **2** Department of Nuclear Medicine, University at Buffalo, State University of New York at Buffalo, Buffalo, New York, United States of America, **3** MR Research Center, Department of Radiology, University of Pittsburgh, Pittsburgh, Pennsylvania, United States of America, **4** Department of Communicative Disorders and Sciences, University at Buffalo, State University of New York at Buffalo, Buffalo, New York, United States of America, **5** Department of Rehabilitation Science, University at Buffalo, State University of New York at Buffalo, Buffalo, New York, United States of America

Abstract

Introduction: Masking level differences (MLDs) are differences in the hearing threshold for the detection of a signal presented in a noise background, where either the phase of the signal or noise is reversed between ears. We use $N0/N\pi$ to denote noise presented in-phase/out-of-phase between ears and $S0/S\pi$ to denote a 500 Hz sine wave signal as in/out-of-phase. Signal detection level for the noise/signal combinations $N0S\pi$ and $N\pi S0$ is typically 10–20 dB better than for $N0S0$. All combinations have the same spectrum, level, and duration of both the signal and the noise.

Methods: Ten participants (5 female), age: 22–43, with $N0S\pi$ - $N0S0$ MLDs greater than 10 dB, were imaged using a sparse BOLD fMRI sequence, with a 9 second gap (1 second quiet preceding stimuli). Band-pass (400–600 Hz) noise and an enveloped signal (.25 second tone burst, 50% duty-cycle) were used to create the stimuli. Brain maps of statistically significant regions were formed from a second-level analysis using SPM5.

Results: The contrast $N\pi S0$ - $N0S\pi$ had significant regions of activation in the right pulvinar, corpus callosum, and insula bilaterally. The left inferior frontal gyrus had significant activation for contrasts $N0S\pi$ - $N0S0$ and $N\pi S0$ - $N0S0$. The contrast $N0S0$ - $N0S\pi$ revealed a region in the right insula, and the contrast $N0S0$ - $N\pi S0$ had a region of significance in the left insula.

Conclusion: Our results extend the view that the thalamus acts as a gating mechanism to enable dichotic listening, and suggest that MLD processing is accomplished through thalamic communication with the insula, which communicate across the corpus callosum to either enhance or diminish the binaural signal (depending on the MLD condition). The audibility improvement of the signal with both MLD conditions is likely reflected by activation in the left inferior frontal gyrus, a late stage in the what/where model of auditory processing.

Citation: Wack DS, Cox JL, Schirda CV, Magnano CR, Sussman JE, et al. (2012) Functional Anatomy of the Masking Level Difference, an fMRI Study. PLoS ONE 7(7): e41263. doi:10.1371/journal.pone.0041263

Editor: Wang Zhan, University of Maryland, United States of America

Received: October 24, 2011; **Accepted:** June 25, 2012; **Published:** July 27, 2012

Copyright: © 2012 Wack et al. This is an open-access article distributed under the terms of the Creative Commons Attribution License, which permits unrestricted use, distribution, and reproduction in any medium, provided the original author and source are credited.

Funding: These authors have no support or funding to report.

Competing Interests: The authors have declared that no competing interests exist.

* E-mail: dswack@buffalo.edu

Introduction

The brain takes advantage of phase differences of binaural auditory stimuli to improve listening ability. An example is that a signal presented within a noise background can have greater than a 10 dB lower (better) detection threshold if it is presented out-of-phase rather than in-phase between ears, when the noise is interaurally in phase. The difference between these signal detection thresholds is known as a masking level difference (MLD). The contrasted stimuli used to determine MLDs can be identical in terms of intensity level, spectrum, and duration, yet the audibility of the signal is very different. The full neural network specific to the processing of binaural MLD stimuli is not well understood, nor has it been extensively investigated using functional imaging. We therefore utilize functional magnetic resonance imaging (fMRI), to localize neural regions involved in MLD processing.

Licklider (1948) [1], by altering the phase of speech presented in a noise background, found intelligibility highest with noise in-phase between ears, and the speech 180° (π radians) out-of-phase between ears. Hirsh (1948) [2] showed a detection advantage for a tone presented binaurally in background noise if the tone source was 180° out-of-phase between the two ears, compared to when both channels of the tone were in-phase. Following Hirsh's work, psychoacoustic studies were performed to characterize the influence of the frequency of the signal, the bandwidth of the noise, and the phase and level differences between ears in affecting the magnitude of the MLD [2–14]. In an experiment that increased the masker from 5 to 65 dB SPL (sound pressure level), the MLD increased from 3.5 to roughly 15 dB [15]. The magnitude of the MLD has been found to decrease as the center frequency of the masker (signal frequency) increased [14], and increase with a decrease in the bandwidth of the masker. There is

an increase in the magnitude of the MLD with an increase in the duration of the signal up to approximately 500 ms [3,4,16]. Interaural phase and time delay differences of the noise and signal have also been investigated. The best detection (lowest signal threshold level) occurred when either the signal or noise was 180° out-of-phase [5,17].

We denote stimuli presented in-phase between ears with a 0, and π (radians) if presented out-of-phase. Both N0S π (noise in-phase, signal out-of-phase) and N π S0 (noise out-of-phase, signal in-phase) have a signal detection advantage compared to N0S0 (noise in-phase, signal in-phase). The MLD is the difference in the participant's signal intensity threshold between MLD conditions, N0S π or N π S0, and the control condition N0S0. The MLD found with the N0S π -N0S0 comparison is typically larger (on the order of 2 dB) than N π S0-N0S0 comparison. Both are typically over 10 dB, and in individual cases can be greater than 20 dB [18,19].

It is reasonable to expect auditory regions such as the inferior colliculus (IC) and auditory cortex (AC) to play an important role in the neural processing of MLD stimuli, and these regions have been investigated in animals. A series of studies by Jiang et al. [20,21] and Palmer et al. [22] showed differences in neuron firing rates in the IC of the guinea pig related to S0 and S π , whereas the condition N π created little if any response, likely due to the desynchronization of the stimuli. A study by Guo and Burkard [23] showed an increased near-field response in the auditory cortex (AC) of the chinchilla for MLD conditions compared to the control condition.

Human studies using electroencephalogram (EEG) recordings have indicated a cortical rather than brainstem MLD response. For example, Fowler and Mikami [24] showed that the slow vertex component P2 thresholds for signal detection in both N0S π and N0S0 conditions increased linearly with increasing noise level. N0S π increased with a smaller (better detection) slope than N0S0, consistent with the findings that the MLD increases for higher overall intensity levels. In a follow up study [25], Fowler and Mikami were unable to show an MLD in the middle latency response (MLR); the MLR is thought to arise from midbrain, thalamic and cortical regions of the auditory nervous system [26]. Wong and Stapells [27] used an amplitude-modulated signal component to evoke an auditory steady state response (ASSR), and found an MLD for the 7 and 13 Hz modulation rates for N0S π -N0S0, but not for N π S0-N0S0. Neither showed a difference at 80 Hz rates. Ishida and Stapells [28] were unable to find an MLD for the 40-Hz ASSR. These ASSR findings parallel the previous studies, if one accepts the view that ASSR modulation frequencies (>70–80) Hz result from superimposed brainstem response, those near 40 Hz reflect superimposed midbrain, thalamic and early cortical responses, and those of very low frequencies (<20 Hz) represent superimposed cortical responses.

Animal-based studies have investigated specific sites such as the IC and AC, whereas human-based psychoacoustic or evoked potential studies are less localizing. Dichotic listening studies, which use language-based tokens and require a participant to attend to a target in either ear, suggest a high level involvement (that includes the thalamus) may be required for processing the MLD. These studies often find a right ear advantage (REA) in attending to stimuli in the right ear, when competing tokens are presented in the left ear, as opposed to vice versa. Kimura proposed a model explaining REA, which included a right to left hemisphere crossing of auditory (speech) information [29]. Perceptually, differences in MLD conditions can be quite large, although acoustically the different MLD conditions are very close to each other, and typically only differ in the phase between ears of

the noise or signal. Using these stimuli in an imaging study would allow the isolation and focus on the small differences between conditions.

Positron Emission Tomography (PET) and functional Magnetic Resonance Imaging (fMRI) imaging have been used to locate neural regions associated with auditory tasks, by comparing sequential image intensity values in relationship with changes in an auditory condition. In the case of H₂O¹⁵ PET the changes in image intensity values are related to regional cerebral blood flow, in the case of BOLD fMRI the changes are due to changes in the oxygenation of the hemoglobin. Herein, we use the term “activation” to refer to a neural region which has statistically significant differences in image values for one condition versus another. Dichotic listening using consonant-vowel and musical-instrument stimuli together with the effect of attention was investigated by Hugdahl et al. [30–31] using ¹⁵O PET, which measured changes in oxygen utilization. This was followed by fMRI work which typically used dichotic word or syllable stimuli [32–38]. Budd et al. [39] used dichotic noise stimuli with varying levels of interaural correlation. Chait et al. [40] used MEG to study Huggins pitch (a dichotic pitch paradigm) and iterated ripple noise (a diotic pitch paradigm). Hall and Plack [41,42] and Barker et al. [43] used fMRI to study these same stimuli and found activations in the auditory cortex. Puschmann et al. [44] used tones in noise (N π S0), Huggins pitch, binaural band pitch and N π noise, and also found pitch related activations in the auditory cortex. Ernst et al. [45] found regions that were mainly sensitive to the signal to noise ratio within and adjacent to lateral Heschl's gyrus. A follow up study found regions in the auditory cortex related to co-modulation masking release [46].

In the present exploratory investigation, we postulate that listeners will have a regionally different neural activation in response to the MLD-dichotic conditions (e.g., N0S π) than to the MLD-reference (e.g., N0S0) conditions. Specifically, we will compare a listener's BOLD level response to each of the MLD dichotic conditions: N π S0, N0S π , N0SL (noise in-phase, signal left ear only), and N0SR (noise in-phase, signal right ear only), to the BOLD level response while listening to the MLD reference condition N0S0 (i.e. N π S0 vs. N0S0, N0S π vs. N0S0, etc.). Because the present study is intended to be exploratory, we hypothesize, for the purposes of our analysis, that any brain voxel could show activation differences between MLD conditions. However, based on related MLD animal studies, we expect differences to be in more rostral regions of the central auditory nervous system, including the IC and AC. Furthermore, we conjecture there will be cortical differences in a listener's BOLD response between the MLD dichotic conditions N π S0 and N0S π based on the commonly observed behavioral and EEG differences observed [27] between these MLD conditions.

Methods

Participants

The study protocol was approved by the University at Buffalo, Health Science IRB; all participants gave their informed written consent prior to auditory screening. Participants had to meet the following criteria: be between the ages of 18 and 45 years; be right-handed; have pure tone hearing thresholds of 25 dB HL or better for frequencies 250 Hz - 8000 Hz for each ear; and have a N0S π -N0S0 MLD of 10 dB or greater. Participants underwent screening and MLD threshold testing in a sound booth within a week prior to MRI testing.

Auditory Testing

Signal threshold testing was performed in a sound booth for conditions: N0S0, N0S π , N π S0, N0SL, and N0SR. Threshold determination used a forced-choice design with three one-second length noise segments which were separated by .5 seconds and presented at 75 dB SPL. Participants had to determine which segment also included an enveloped 500 Hz tone as the signal. Testing started with a signal level of 85 dB SPL. This signal level stayed the same until the participant was able to correctly identify the signal two times in a row, or was unable to correctly identify the signal once. If the participant was unable to detect the signal, the signal level increased; if the participant was able to detect the signal in two successive trials at the same signal level, the signal level decreased. Seven direction changes were used. Step sizes between level changes were 8, 4, 4, 4, 2, 2, 2 dB. The average of the last two reversals was used as the threshold. MLDs were calculated by subtracting N0S0 threshold from the thresholds found for: N0S π , N π S0, N0SL, and N0SR. Participants additionally underwent a forced choice signal lateralization test, and identified randomly presented 1 second segments of N0SL, N0S0, or N0SR, as "Signal Left", "Signal Both", or "Signal Right" for 30 presentations. The tone signal was presented 3 dB above the participant's N0S0 signal threshold.

Stimuli Construction

Conditions were created by summing together noise and signal segments using MATLAB (Natick, MA). The signal was a 500 Hz sine signal, presented in bursts lasting 250 ms with a 25 ms rise and fall time, presented every 500 ms. The noise for the presentations was created by sampling a very long duration of noise (approx. 10 minutes) created and filtered using a 400–600 Hz band-pass, equi-ripple finite impulse response (FIR) filter, with order 1064, having 50 dB attenuation \pm 100 Hz, designed with the Filter Design and Analysis Tool in Matlab. The program used calibration values of noise and signal intensity as a program parameter. Calibration measurements were made using a Larson Davis System 824, with acoustic coupler AEC101 IEC 318 (LD-SLM) of individual noise and signal segments. The signal and noise were summed together by randomly choosing a point in the band-passed noise segment, and searching forward for 2 ms (one cycle of the signal) to determine the starting point that would give the highest correlation between the noise and signal. After selecting a starting point, one second each of noise and signal were summed together for the sound booth stimuli, and eight-second segments were summed together for the scanner stimuli. The noise used a .1 second ramp filter at the start and end of each stimulus.

Acoustic Calibration

MRI-compatible headphones from Resonance Technologies, Inc. (Northridge, CA) were tested and levels calibrated using the LD-SLM. Signal phase between ears was checked using a single cycle sine wave as input to the headphones and was measured through the LD-SLM with an oscilloscope (Tektronix TDS3012). Based on our findings, the stimuli were corrected in software to compensate for reversal of phase (180°) by the headphones. The scanner headphone acoustic output was evaluated with a Stanford Research System Model SR785, Dynamic Signal Analyzer (DSA), to determine the frequency response to the noise and signal. In response to the 400–600 Hz band-pass noise, resonances in the acoustic system showed a maximum peak in the 600–700 Hz range. For this reason, a shortened version of the MLD testing was also performed with the scanner headphones to ensure that subjects had an MLD response with scanner headphones. The pure tone signal

response of the headphones was also measured with the DSA, and didn't reveal any problems. Prior to each scanning session, presentation levels were verified using a Radio Shack model 33–2055 sound level meter, which was mounted to a fabricated coupler. Sennheiser 280 Pro headphones were used for the screening, and underwent similar testing and calibration. Correct phase of signal was observed between ears, as was a steep drop off below 400 Hz and above 600 Hz for the noise.

Scanner Room MLD Testing

MLD threshold testing in the scanner room using scanner headphones followed the same procedure used in the screening (described above), but used only five direction changes, and only two conditions: N0S0 and N0S π . This testing was used only for assessment of MLD effect size in the scanner environment. Signal level for fMRI presentation was determined separately using longer length segments such that participants could barely identify that the signal was present for the N0S0 condition, but could not identify if the signal was present 2 dB lower. This signal level was fixed for all stimulus conditions.

Scanner Conditions

Scanner conditions were "NoStim" (No Stimuli), N0, N π , S0, S π , N0S0, N0S π , N π S0, N0SL, and N0SR. Each presentation lasted for eight seconds. Presentations followed one second of quiet, which was inserted to prevent an adaptation effect between scanner coil noise and stimuli. The scanner TA (acquisition time) was 3 seconds, resulting in 12 seconds between the start of consecutive conditions. Four sessions were collected for each subject. Each session presented each of the 10 conditions six times. The conditions were presented in randomly-chosen permutations with the provision that neighboring permutation end and start conditions could not be the same. Prior to each session, participants were instructed to "listen for the signal". After each session, participants were asked whether they were still comfortable. Each session included three frames prior to the stimuli presentation, which were discarded.

Scanning Parameters

MR Imaging was performed using a GE 3T Signa Excite HD 12.0 Twin Speed 8-channel scanner (General Electric, GE, Milwaukee, WI) with a maximum slew rate of 150 mT/m/ms and maximum gradient amplitude in each orthogonal plane of 50 mT/m (zoom mode). An 8-channel head coil (In Vivo Corporation, Orlando, FL) was used for all acquisitions. A high-resolution 3D fast spoiled gradient echo (FSPGR) scan was collected at a voxel size of 1×1×1 mm (acquisition matrix of 256×256, FOV 25.6 cm). 174 locations per slab were acquired, 1 mm thick, ensuring whole brain coverage. Echo/repetition time for the 3D FSPGR scan were TE/TR = 4.1/9.1 ms, flip angle = 20°, 1 average, and bandwidth 19.23 kHz (150 Hz/px). 2D sparse functional imaging was performed with a TE = 35 ms. and group delay = 9 seconds, which provided nine seconds of "quiet", during which the stimuli was presented, followed by TA = 3 seconds during which the fMRI planes were actively acquired [47,48]. 27 slices 4 mm thick were acquired with no gap, using a 128×128 acquisition matrix, and FOV = 24.0 cm, for an in-plane resolution of 1.9 mm×1.9 mm.

Processing

Dicom image files were converted to NIfTI format using dcm2nii (MRICron; <http://www.sph.sc.edu/comd/rorden/mricron/>). Realignment and co-registration of functional images

to the participants T1 weighted image was performed using SPM5 (<http://www.fil.ion.ucl.ac.uk/spm>). Segmentation was performed on the participant's T1 image, which provided spatial normalization parameters for transforming the co-registered functional images into the coordinate system of the provided SPM templates. Scans were smoothed using an 8×8×8 mm Gaussian kernel. After using SPM5 to create the general linear model including all conditions for each session, SPMd [49] was used to identify outlying scans. Next, a first-level SPM analysis was then performed for each subject which included all four sessions, but excluded scans identified by SPMd as having greater than 30 times the median number of outlier voxels, or which had more than 1 mm total motion from the previous scan. The first-level analysis provides separate images showing activation for each individual for each contrast. A second-level analysis was then performed using the contrast images produced for each individual in order to make statistical parametric maps.

Results

Five female and five male participants were recruited. All met the inclusion criteria described above for the study. Male and female participants matched in age within 2 years and ranged in age from 23 to 43 years; the mean female and males ages were 29.2 and 29.8 years, respectively. After each scan session, all participants were alert when spoken with, and reported being comfortable. Each participant completed the full scanning session.

Auditory Testing Results

Mean threshold values for N0S0, N0Sπ, NπS0, N0SL, and N0SR measured during the auditory testing performed in the sound booth were 68.6, 54.2, 56.4 59.0, and 59.0 dB SPL, respectively. Hence, the mean MLD for N0Sπ - N0S0 and NπS0 - N0S0 were 14.4 and 12.2 dB, respectively. Mean MLDs for N0SL and N0SR were both 9.6 dB, but participants had up to an 8 dB imbalance between these two conditions. The N0SR-N0S0 MLD for participant 4 was zero. The mean N0Sπ - N0S0 MLD measured using scanner headphones was 11.4 dB, with minimum and maximum values of 4 and 16 dB. Individual MLD thresholds are given in Table 1, a comparison of the MLD thresholds measured in the soundbooth and scanner room is given in Table 2.

For the lateralization testing, four participants had a 90% success rate or better, and three participants had a 30% success

Table 2. A comparison between MLD condition measurements (in dB SPL) made in the sound booth and scanner room of the thresholds for detection of 500 Hz sinusoid signal in 75 dB SPL, 400–600 Hz band-pass noise.

Subject	N0S0	N0Sπ	Scanner MLD	Sound Booth MLD
1	63	55	8	12
2	67	53	14	14
3	63	55	8	12
4	61	57	4	10
5	73	57	16	12
6	65	53	12	14
7	67	51	16	24
8	71	59	12	14
9	65	53	12	14
10	67	55	12	18
	66.2	54.8	11.4	14.4

doi:10.1371/journal.pone.0041263.t002

rate or worse (i.e. less than expected by chance). However, in less than 4% of responses did participants mistake the signal presented to the left as right, or vice versa. Since the signal was presented at 3 dB above the N0S0 threshold, it was on average ~13 dB above the thresholds for N0SL and N0SR. Individual lateralization results are provided in Table 3.

MRI Results

In Table 4 we describe all second-level analyses that meet the strict criterion of significance $p < .05$ correcting for family-wise error (FWE), and regions that meet a weaker "trending" criterion of $p < .1$, FWE, which for comparison was roughly equivalent to $p < .00001$ uncorrected, for voxel-wise comparisons.

MLD: N0Sπ vs. N0S0

Second-level random effects analysis revealed a small region reaching voxel-wise significance in the left inferior frontal gyrus (LIFG) for the contrast N0Sπ - N0S0. The opposite contrast N0S0 -

Table 1. Thresholds (measured in dB SPL) for detection of 500 Hz sinusoid signal in 75 dB SPL, 400–600 Hz band-pass noise, with all measurements made in the sound booth.

Participant	Gender	Age	N0S0 (Ref)	N0Sπ (MLD)	NπS0 (MLD)	N0SL (MLD)	N0SR (MLD)
1	M	31	67	55 (12)	55 (12)	57 (10)	57 (10)
2	M	27	63	49 (14)	55 (8)	59 (4)	59 (4)
3	F	43	67	55 (12)	55 (12)	57 (10)	61 (6)
4	F	26	65	55 (10)	55 (10)	59 (6)	65 (0)
5	F	30	73	61 (12)	59 (14)	59 (14)	65 (8)
6	M	25	67	53 (14)	55 (12)	59 (8)	57 (10)
7	F	24	77	53 (24)	57 (20)	59 (18)	57 (20)
8	M	25	71	57 (14)	61 (10)	61 (10)	57 (14)
9	M	41	65	51 (14)	53 (12)	59 (6)	51 (14)
10	F	23	71	53 (18)	59 (12)	61 (10)	61 (10)
Mean		27	68.6	54.2 (14.4)	56.4 (12.2)	59.0 (9.6)	59.0 (9.6)

doi:10.1371/journal.pone.0041263.t001

Table 3. Individual volunteer's confusion matrices for identifying whether the signal was presented to the "Left", "Both", or "Right" ear(s).

Participant No.	Lateralization % Correct	Response	Presentation		
			Left	Both	Right
1	90.0%	Left	4	2	0
		Both	0	10	1
		Right	0	0	13
2	23.3%	Left	0	2	2
		Both	3	6	12
		Right	1	3	1
3	93.3%	Left	6	0	0
		Both	0	12	1
		Right	0	1	10
4	26.7%	Left	4	1	3
		Both	1	3	5
		Right	0	12	1
5	40.0%	Left	3	5	2
		Both	1	3	5
		Right	1	4	6
6	63.3%	Left	1	0	1
		Both	3	10	2
		Right	0	5	8
7	76.7%	Left	4	2	0
		Both	1	9	1
		Right	0	4	9
8	30.0%	Left	6	10	1
		Both	4	1	6
		Right	0	0	2
9	93.3%	Left	6	0	0
		Both	0	12	0
		Right	0	2	10
10	90.0%	Left	5	1	0
		Both	0	12	0
		Right	0	2	10

doi:10.1371/journal.pone.0041263.t003

$N0S\pi$ showed a 1608 mm³ region of significant activation, located in and around the right insula.

MLD: $N\pi S0$ vs. $N0S0$

Second-level analysis did not reveal any regions reaching significance using FWE correction for the contrast $N\pi S0 - N0S0$. The maximum occurred within the LIFG, $p < .0001$, uncorrected, which we include in our discussion because of its similar location to the $N0S\pi - N0S0$ activation. Likewise the opposite contrast, $N0S0 - N\pi S0$, did not reveal any significant or trending regions. The largest threshold region was located in left insula and planum polare ($p = .167$, FWE, cluster-wise).

$N0S\pi$ vs. $N\pi S0$

The contrast $N\pi S0 - N0S\pi$ had a widely-distributed set of regions which reached significance: left insula, right superior frontal gyrus, a region on the right side of the corpus callosum, and

the right pulvinar thalami; three of these regions had significance $p < .01$, FWE, cluster-wise. Additionally, the right insula met our weaker cluster significance threshold of $p < .1$, FWE. Statistical parametric maps showing the (group) activation in the corpus callosum and pulvinar thalamus are shown in Figures 1 and 2. There were no regions which reached or approached significance for the contrast $N0S\pi - N\pi S0$.

Lateralization

SPM results for conditions involving $N0SR$ and $N0SL$ did not exhibit clear patterns. The contrasts $N0SL$ vs. $N0S0$, $N0SR$ vs. $N0S0$, and $N0SL$ vs. $N0SR$ had no regions of activation. The most notable results arose from the contrast $N0SR - N0S\pi$, which showed large activations in and around the left and right caudate nucleus. Individual participant results for contrasts involving $N0SL$ and $N0SR$ vs. $N0S0$ appeared inconsistent. We believe this might be due to differences in subjects' lateralization ability. To test this belief, an analysis using a participant's overall lateralization success (percentage correct) as a covariate was attempted, as was limiting the analysis to only participants who performed well on the lateralization task. The results of both post-hoc analyses did not reach significance, and likely suffered from limited power.

Other

We also present comparisons between three noise-with-signal conditions versus the corresponding noise-only conditions: $N0S0$ vs. $N0$, $N0S\pi$ vs. $N0$, and $N\pi S0$ vs. $N\pi$. We found no activations between $N0S0$ and $N0$, in either direction. The opposite contrast, $N0 - N0S\pi$, yielded two regions: one in the post-central gyrus that reached significance, and the other in the right STG that approached significance. The contrast $N\pi S0 - N\pi$ revealed two regions that approached or reached significance: LIFG (similar in location to the contrasts $N\pi S0 - N0S0$ and $N0S\pi - N0S0$), and right pulvinar thalamus. There were no activations for the opposite contrast, $N\pi - N\pi S0$.

We hypothesized, but did not observe, activation in the primary auditory cortex with the $N0S\pi - N0S0$ contrast. In Figure 3, we show the number of participants that presented increased activation in the R. STG (SPM $T > 1.0$), as well as the number of participants showing decreased activation (SPM $T < 1.0$). The cross hairs mark a location in the right STG where three participants exhibited an increase, three a decrease, and four had no change for the contrast $N0S\pi - N0S0$. For the $N0S\pi - N0S0$ contrast, a search of voxels with $p < .01$ (uncorrected) reveals a cluster of 3012 mm³ in the left STG, which is cluster-wise significant, $p = .035$, FWE. There was a cluster located in the right STG, which did not reach significance with peak spm t value = 5.5 and extent size of 1620 mm³. For the contrast $N0S0 - N0S\pi$ there was a cluster with extent size 1207 mm³ and peak spm $t = 5.19$ in the left STG, and a cluster with extent size 1187 mm³ with peak spm $t = 5.44$ in the right STG, however neither cluster was statistically significant accounting for FWE. As a check of the processing, the contrasts $S0 - N0S\pi$ was examined for all subjects using a height threshold of $p = .01$, uncorrected. All but two subjects had a peak spm t value > 3 located in both the left and right STG, with peak spm $t = 11.5$. While no regions were significant for the second level analysis, there was a cluster of size 1100 mm³ with peak spm $t = 5.8$ located in the left STG, and a cluster with extent size 2185 mm³ and peak spm $t = 8.12$ located in the right STG, using a height threshold of $p < .01$, uncorrected. Hence for our tested Stim vs NoStim contrasts, we consistently observed clusters of voxels with moderately high spm t values

Table 4. Table of SPM activations for study contrasts.

Contrast	MNI Coor.	Location Label	Size	Cluster P, FWE	Voxel P, FWE
	x,y,z mm				
N0S π -N0S0	-52, 30, 10	LIFG	170	0.737	0.017
N0S0-N0S π	33, -7, 20	R. Insula	1608	<0.001	0.757
N π S0-N0S π	-34, -7, 21	L. Insula	2919	<0.001	0.809
	31, -22, 21	R. Insula	433	0.091	1.000
	10, 69, 14	Superior Frontal Gyrus	513	0.047	0.676
	14, 27, 10	Genu Corpus Callosum	566	0.031	0.999
	10, 13, 16	Corpus Callosum	1476	<0.001	0.386
	26, -24, -2	R. Pulvinar Thalami	2241	<0.001	0.201
N0S π - N0SL	-8, -82, -15	Declive	101	0.955	0.051
N0SR-N0S π	-22, -3, 23	Left Caudate Nucleus	3618	<0.001	0.754
	27, 26, 18	Right caudate Nucleus	5835	<0.001	0.826
	18, -14, 37	Right Cingulate Gyrus	536	0.027	0.351
N0-N0S π	50, 11, 14	Post. Central Gyrus	551	0.041	1.000
	63, -53, 13	R. STG	465	0.081	0.836
N π S0-N π	-47, 31, -3	LIFG	932	0.056	0.988
	24, -32, 9	R. Pulvinar Thalami	575	0.025	0.999
N0-N π	-42, 60, 44	Left Angular Gyrus	627	0.023	0.919
	51, -59, 34	Right Angular Gyrus	861	0.004	0.982
	4, -34, 31	Right Cingulate Gyrus	1012	0.002	0.817
	10, -57, 26	Right Posterior Cingulate	456	0.084	0.813
	7, 43, 25	Right Medial Frontal Gyrus	1239	<0.001	0.982
	54, 24, 8	Right Inferior Frontal Gyrus	852	0.005	0.955

For each region of activation; the values from SPM are reported, together with the best representative anatomical label.
doi:10.1371/journal.pone.0041263.t004

located in the STG, as would be expected in response to auditory stimuli.

Discussion

Our study used functional imaging to search nearly the entire brain for neural correlates to the MLD. We did not find support for our hypothesis of activation associated with MLD (comparisons: N π S0 vs. N0S0, N0S π vs. N0S0, N0SL vs. N0S0 and N0SR vs. N0S π) in more rostral regions of the central auditory nervous system, such as the IC and AC, which was based on animal model work [20–23]. We do not rule out the involvement of these regions, but speculate that the functional anatomical variability of the AC prevented detection using voxel-wise statistics family-wise error corrected across the whole brain. However, our results do indicate clear neural correlates of the MLD in the insula, pulvinar thalamus, and corpus callosum. We interpret this activation pattern as consistent with the Kimura model for REA for speech processing [29], and syllable-based dichotic-listening studies [36–38,50–54].

The main assumptions of Kimura's model are: 1) auditory information is principally processed in the temporal lobe contralateral to the ear of presentation; 2) the left hemisphere is more specialized for language/speech processing than the right (in particular for right-handed participants); 3) there is a decussation of auditory information from the right hemisphere across the corpus callosum to the left hemisphere (which is specialized for the

processing of speech stimuli) for further processing; and 4) the ipsilateral pathway can be suppressed by the contralateral pathway [29,55].

Assumption 1 is firmly established in the literature [56], but is not addressed by our data, as all of our conditions (except the NoStim condition) are presented to both ears. Assumption 2 is supported by our data, as there was a significant cluster for the contrast N0S π -NoStim with extent size 3012 mm³ which reached significance within the left STG, whereas a cluster about half the size located in the right STG did not reach significance. The activation in the LIFG for the MLD contrasts: N0S π - N0S0, N π S0- N0S0, and N π S0-N π also fits with the left lateralization proposed by the "what" portion of the "what"/"where" model [57–60], which postulates that the neural processing of information will follow different pathways, depending on whether it is being processed based on recognition or localization. While the Kimura model is for speech, and we used tonal (500 Hz) stimuli, it is not unreasonable to expect a left-hemisphere dominant response, since the stimuli were not continuous but presented in short 250 ms enveloped bursts every half second. The left AC has been shown to respond well to temporal changes [55], as would be required in the tracking of formants. We did not find significant regional activation in the right STG, for any of the contrasts using the "NoStim" condition or any other evidence to argue for right hemisphere dominance.

Activation of the corpus callosum for the contrast (N π S0-N0S π) gives evidence of inter-hemispheric communication (part of

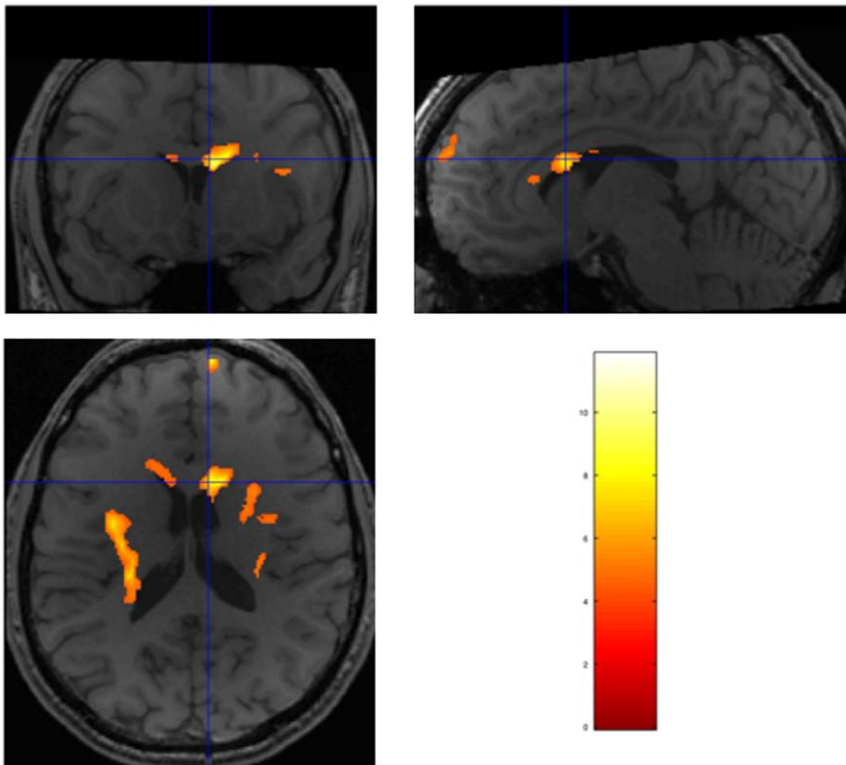


Figure 1. Two separate activation regions are seen within the corpus callosum for the group comparison using the 2nd level contrast $N\pi S0 - N0S\pi$, threshold $p < .001$, uncorrected for family-wise error (FWE). Because the activation maps have been smoothed at $8 \times 8 \times 8$ mm FWHM, there may appear to be an overlap of the activation with the ventricle seen on the high resolution T1 image, which we did not attempt to mask. The statistics for this cluster is an indication that there exists at least one point of activation within the cluster with true significance ($p < .01$, FWE, cluster-wise for the larger region, Table 4). Obviously, the true source of activation would be in the tissue region, as the region of significance would likely be near voxels with the highest t-scores, which are located within the corpus callosum. The large activation seen in the L. insula is also cluster-wise significant ($p < .01$). All conditions were presented using random permutation ordering to prevent possible cyclic responses or habituation effects being mix with the contrast of conditions. Furthermore, SPMd was used to prevent any possible influence of outliers or motion. doi:10.1371/journal.pone.0041263.g001

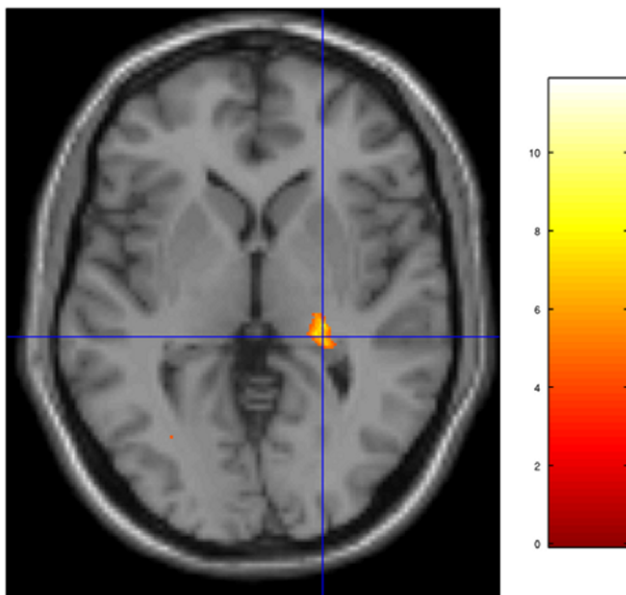


Figure 2. Activation seen in the right pulvinar thalamus for the group comparison 2nd level contrast $N\pi S0 - N0S\pi$, threshold $p < .001$, uncorrected for FWE. doi:10.1371/journal.pone.0041263.g002

assumption 3 of the Kimura model). While less common, corpus callosum activation has been previously observed, including in studies that involved stimulation requiring high inter-hemispheric communication [61–63]. We were careful to guard against artifacts, and we believe this white matter activation to reflect a true processing path. The two contrasted conditions are similar perceptually compared to the other stimuli, and we did not observe any relative motion of the subjects between conditions. While we employed standard SPM realignment methods, we also eliminated scans that had more than 1 mm total motion from the previous scan. The conditions were presented in an order determined by random permutations, and hence all conditions were balanced in being presented both early and late in the presentation sequence. The contrasts in this study were all “within” subject, hence we do not expect an artifact due to spatial normalization differences, such as could be found if comparing between groups. Finally, we used SPMd to eliminate scans that had the possibility of being a transient, which was a cautionary step most others do not take, likely because of the increased difficulty of performing the analysis.

We note that differences between our MLD conditions $N\pi S0$ and $N0S\pi$ imply an underlying activation difference between at least one of the conditions and the control condition, $N0S0$. The noise portion of the stimuli has a wider bandwidth and a (generally) higher overall SPL than the sine-wave portion. Accordingly, we speculate that metabolic differences in processing

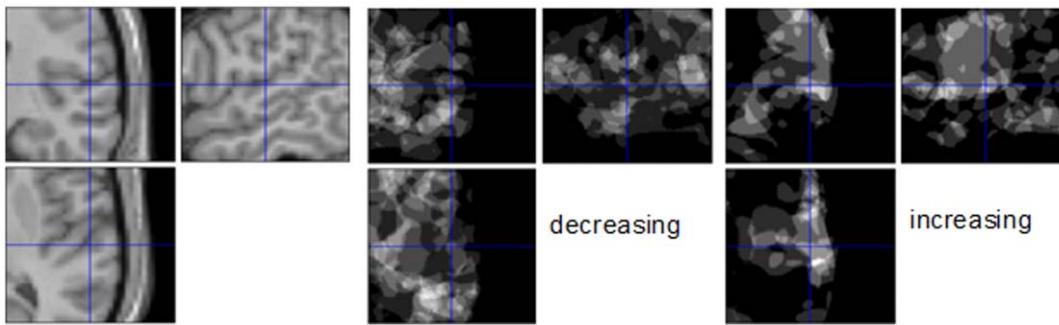


Figure 3. Left image: T1 image showing R STG. Middle image: subjects with a decrease in activation for $N0S\pi - N0S0$. Right image: Image of number of participants with an increase in activation for $N0S\pi - N0S0$. doi:10.1371/journal.pone.0041263.g003

are largely influenced by changes in the noise component of our stimuli. We conjecture that information of the noise signal for $N\pi S0$ crosses the corpus callosum, going from right to left hemisphere. We believe this ipsilateral (double crossing) noise signal may combine with the matching contralateral signal in the left insula, with a net suppression effect. Plausible evidence supporting this belief is seen by the activity decrease in the left insula for $N\pi S0$ compared to $N0S0$.

In contrast, we conjecture that the noise portion of $N0S\pi$ is suppressed earlier in the processing chain, perhaps in the right insula or pulvinar thalamus, which would support the reduced activity seen in the corpus callosum (contrast: $N\pi S0 - N0S\pi$), and the large decrease in activation (1500 mm^3) in the right insula (contrast: $N0S0 - N0S\pi$). Furthermore, we believe that the resulting combination of the noise signal with the ipsilateral auditory signal in the left insula is reduced as a result of the diminished inter-hemispheric transfer. Diagrams of our hypothesized release from masking models for the MLD conditions $N\pi S0$ and $N0S\pi$ are shown in Figure 4 and 5. While dichotic listening is generally believed to involve the transfer of auditory information across the corpus callosum, studies which have examined the effects of surgical sectioning of the corpus callosum indicate that primary auditory pathways are more towards the caudal end than the activation we found [64–66] This could indicate that the contrast reflects a decrease in activity for the $N0S0$ condition. This is consistent with previous findings, where one subject [64] had an improved score for a left ear attention after the anterior sectioning of the corpus callosum. If nothing else, the contrast difference between $N\pi S0 - N0S\pi$, shows that all dichotic stimuli are not treated similarly. The surgical studies used dichotic speech pairs (numbers or constant vowels). We suspect that auditory signals cross in the caudal portion of the corpus callosum, but the differences between conditions were not great enough to be observed. Again, white matter activation is rare, and the reason we found a difference may only be because we are observing both a slight increase and decrease compared to the control condition $N0S0$.

Assumption 4 of Kimura’s model states that the ipsilateral pathway is suppressed; which has empirical support from the study by Pollmann et al. [50], who found that patients with lesions in the posterior part of the corpus callosum showed a nearly 100% REA. Our data is not inconsistent with this, but neither does it support this element of the model.

Dichotic Listening

The thalamus has been proposed as a gating system for speech (and possibly other stimuli) to be sent to more rostral brain regions [67,68], based on dichotic-listening experiments

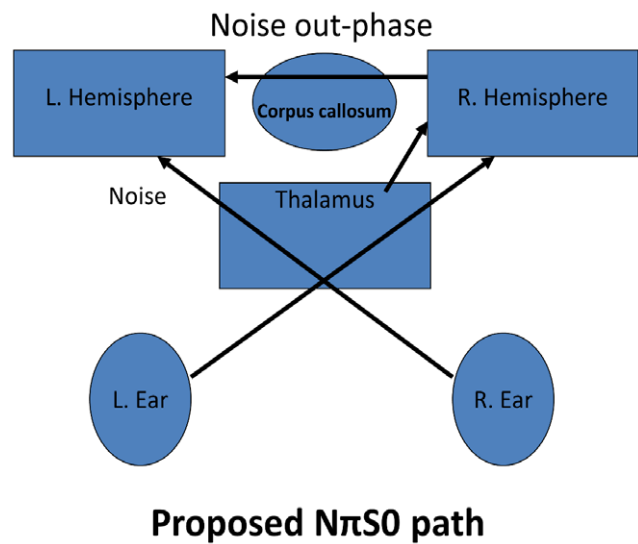


Figure 4. Diagram showing theorized release from masking processing paths for $N\pi S0$. When the noise portion of the stimuli from the left ear arrives in the left hemisphere after crossing the corpus callosum, the subsequent combined noise component after mixing with matching but opposite-phase noise from the right ear is suppressed, because the combining signals lack coincidence. doi:10.1371/journal.pone.0041263.g004

with patients undergoing stereothalamotomy. A dichotic-listening study by Fitch et al. [69] found that lesions in the posterior thalamus inhibited the processing of auditory stimuli, including attending to stimuli presented to a particular ear. If the pulvinar thalamus is acting as a gating mechanism in our study, we propose that it is triggered when the signal is present in the stimuli. The right pulvinar was observed as part of the large activation pattern for the contrast $N\pi S0 - N0S\pi$ (Table 4 and Figure 1). The results also revealed activation in the pulvinar thalamus for the contrast $N\pi S0 - N\pi$ ($p = .025$, FWE, cluster-wise), which gives another example of its responsiveness to the presence of the signal in background noise. As a final example, if the signal is removed from the contrast of MLD conditions $N\pi S0 - N0S\pi$ (which had strong activations), the resulting contrast, $N\pi - N0$, has no regions with significant activation. The reverse contrast, $N0 - N\pi$, yielded a very different activation pattern, with significant activation found in the left and right

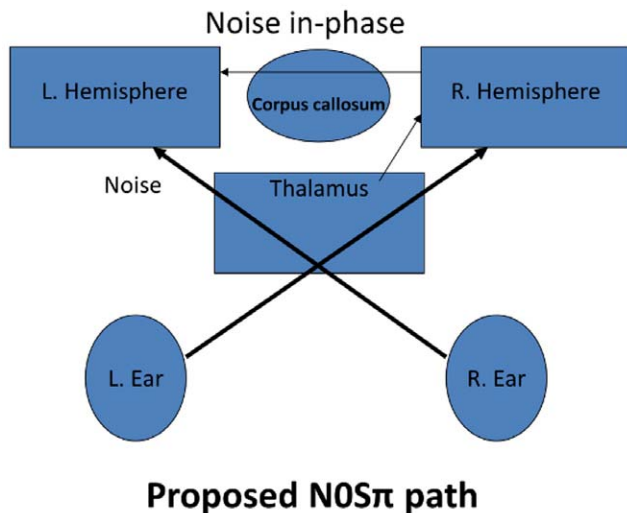


Figure 5. Diagram showing theorized release from masking processing paths for $NOS\pi$. When (if) the noise signal from the left ear arrives in the left hemisphere, after crossing the corpus callosum, it has already been greatly suppressed. The site of the original suppression could be at the right pulvinar thalamus or insula of the right hemisphere.
doi:10.1371/journal.pone.0041263.g005

angular gyrus, right cingular gyrus, right posterior cingulate, right medial gyrus, and right inferior frontal gyrus.

Lateralization

Our study's focus was on finding neural correlates associated with the MLDs, and we have reported on the primary focus of the study. In addition to the MLD conditions $NOS\pi$ and $N\pi S0$, we used the MLD conditions $NOSL$ and $NOSR$. These conditions have an interesting place in the hierarchy of the MLD conditions, since starting from the $NOSL$ or $NOSR$ condition, the addition of the signal in-phase to the opposite ear becomes $NOS0$, or becomes $NOS\pi$ if the added signal is π radians out-of-phase. Based on pilot testing, we believed that participants would be able to distinguish between the signal being presented to the left, right or both ears, amid the noise background.

Lateralization testing with MLDs is not normally performed, and has only infrequently been reported in the literature [70]. The results of the lateralization testing, which was only performed during the screening session (in the soundbooth) were very mixed, with four participants performing very well, and three very poorly (slightly less than expected by chance). Yet, overall, in less than 4% of responses did participants mistake the signal presented to the left as right, or vice versa. The signal was presented at 3 dB above the $NOS0$ threshold, and was on average ~ 13 dB above the thresholds for $NOSL$ and $NOSR$. The thresholds for $NOSL$ and $NOSR$ were also mixed. For example, one subject's MLD for $NOSR$ was 0 dB. By basing the signal level on the $NOS0$ condition, we effectively made the lateralization harder on those who may have had a more effective strategy for $NOS0$ signal detection. The remainder of MLD behavioral testing was unremarkable. For example, we observed $NOS\pi$ was roughly 2 dB better than $N\pi S0$ [14], which was roughly 2.5 dB better than $NOSL$ or $NOSR$. Based on the lateralization results, we will assume that at least some of the participants were unable to lateralize the location of the signal while in the scanner. The perceptual difference for a signal presented in-phase and out-of-phase

diminishes at levels above threshold [71], therefore we did not consider a higher signal level.

Lack of a strong finding in our hypothesized regions of AC and IC has some support from previous studies. We believe our results to be consistent with a study by Hall and Plack [41,42], which used dichotic stimuli to investigate Huggins pitch, where the perception of pitch was created by linearly changing the phase between ears through 1 cycle of a small band centered around 200 Hz of broadband noise. In their study, Huggins pitch was contrasted against a "just-noise" condition, whereas we contrasted our MLD conditions against $NOS0$, which has a detectable pitch due to the presence of the (audible) in-phase 500 Hz stimulus. As both MLD and non-MLD conditions had a detectable tonal stimulus in our study, we expect our 'pitch' vs. control contrast to be smaller than that found by Hall and Plack. In a study using 16 participants, Hall and Plack had comparisons between pitch and noise that did not identify a single pitch center common to all listeners [41] (pg. 579). However, as an indication of the between-subject anatomical variability of the auditory cortex, they were able to find regions sensitive to pitch stimuli in most subjects, but in slightly varying locations. Hence, our lack of finding any MLD-related activation in the AC is not surprising. In our study we had fewer subjects, and we limited ourselves to FWE statistics corrected for the whole brain as a search region. The advantage of our approach is that we were able to find regions we didn't originally specify (e.g. pulvinar thalamus); our disadvantage is that our analysis methods are less sensitive than studies that limit their search to the auditory cortex.

The MLD conditions, when compared to the no stimulus condition ($NOS0$ - NoStim and $NOS\pi$ - NoStim), only showed one cluster which was significant, which was located in the left STG for contrast $NOS\pi$ - NoStim. However, for both contrasts, there were clusters in both the left and right STG with peak spm t value greater than 5 and size greater 1100 mm^3 , when using a height threshold of $p = .01$, uncorrected. Examination of individual results for contrast $S0$ - NoStim showed that there was large variability in responses between individuals ranging from two subjects having only a weak activation in either the left or right STG to one subject that had peak t values greater than 11 (bilaterally). We believe that the weakness of these contrasts is likely the result of anatomical variability. Also, given that our instructions to the subject was to "listen for the signal", different subjects may have treated the absence of stimuli ambiguously [72]. We'll note that we consider our true control condition for the study to be $NOS0$, and that the "NoStim" condition was intended primarily to test the processing path. We believe that our finding for $NOS0$ - NoStim in which the signal portion ($S0$) is barely audible, is similar to that by Hart et al. [73], who on a larger data set (12 participants versus our study's 10 participants, 28 repetitions vs. our study's 24, and using a presentation level of 90 dB SPL compared to our presentation level of 75 dB SPL), reported no activation for stationary unmodulated (i.e. constant) tones.

Our study compared conditions that were the same in intensity, spectrum, and duration, and we expected neural activation differences because of the perceptual differences. Yet the conditions used in the contrasts with the two largest activation patterns, $N\pi S0$ - $NOS\pi$ and $N0$ - $N\pi$, are close enough that perceptually they may be hard for some to distinguish, in the same way that some may not recognize stereo speakers or headphones as being wired out of phase. Our rationale for comparing $N\pi S0$ and $NOS\pi$ was based on the findings of Wong and Stapells [27], who found an auditory steady state response MLD for modulation

frequencies of 7 or 13 Hz for the $N0S\pi$ versus $N0S0$ comparison, but not for the $N\pi S0$ vs. $N0S0$ contrast. That we find greater activation for $N\pi S0$ than $N0S\pi$, yet the auditory evoked response MLD was seen only for $N0S\pi$, could be due to the auditory evoked response being sensitive to the signal portion of the stimulus (i.e., phase locked to the envelope of the signal), while the fMRI finding was driven by the noise portion of the stimulus, as we previously argued.

Strengths and Weaknesses

Our design approach was purposely broad (using 10 conditions) and exploratory in nature. Utilizing fMRI, we were able to search nearly the entire brain for activation patterns in response to MLD conditions. The benefit of our broad approach was that we achieved strong and interesting results outside of our stated study hypothesis, while within our SPM analysis hypotheses. We opted against the use of a button press for monitoring a participant's attention in order to avoid potential conflicting neural activations; participants were instead instructed to listen for the signal. We believe this approach was sufficient for our set of attentive and well-intentioned participants. The participants, as observed through conversation with the scanners communication system, remained alert throughout the study. SPMd was used as a final guard to identify and eliminate scans which may have been influenced by system transients or brief, unexpected participant behavior or focus.

A sparse MRI sequence allowed the stimuli to be presented during periods of relative quiet, and provided a better environment for listening for the modulated signal in the noise. We included a one second gap of 'no stimulus' between the end of the scanner data collection and the presentation to preserve a clear and consistent onset of the stimulus, and to prevent an auditory adaptation effect [74,75] from the scanner noise. Since the band-passed noise component of the stimuli and 500 Hz tone are correlated, we went through the additional step of searching through 2 ms of the noise, to find the noise starting position that gave the maximum correlation, for a consistent presentation strategy [76]. The $N0S0$ threshold with the scanner headphones in the scanner room was approximately 2 dB better (lower) than in the sound booth. The lower threshold is likely related to a peak in the noise spectrum above 600 Hz for the scanner headphone,

which implies a lower overall noise level near 500 Hz for the scanner vs. sound booth headphones. Also, this indicates that the use of a sound booth isn't critical, likely due to the 75 dB SPL background noise masking much of the environmental background noise.

Our study enrolled 10 participants, and was limited by resources. This allowed sufficient power for our primary hypotheses and contrasts, as many of our reported regions had $p < .01$, FWE, cluster-wise. Our analysis of a hypothesized region in auditory cortex showed that some participants had increased activations while some others had decreased activations. We believe this indicates that a moderate increase in the number of participants would not have appreciably improved our findings for our hypotheses. However, while we approached the analysis globally, a regionally-specific analysis of the auditory cortex (which also accounted for anatomical variability of the auditory cortex) may have been able to find significance. While we are satisfied with not using a button press for our main hypotheses, we recommend that future work, if it focuses on lateralization, include a button press.

Conclusions

Our findings reveal a network of neural correlates associated with the MLD (that are outside of the previous focus of MLD research) which involves the pulvinar thalamus, the insulae, and a neural process that crosses the corpus callosum. These findings, in particular the involvement of the pulvinar thalamus, fit with the dichotic listening research, and are congruent with the proposed model of Kimura.

Acknowledgments

We are thankful for the resources and support provided by Robert Zivadinov, M.D., Ph.D., Director of the Buffalo Neuroimaging Analysis Center.

Author Contributions

Conceived and designed the experiments: DSW JC JES DH RFB. Performed the experiments: DSW JC CVS CRM. Analyzed the data: DSW. Contributed reagents/materials/analysis tools: DSW. Wrote the paper: DSW RFB JC CVS CRM JES DH.

References

- Licklider JCR (1948) The influence of interaural phase relations upon the masking of speech by white noise. *The Journal of the Acoustical Society of America* 20: 150–159.
- Hirsh IJ (1948) The influence of interaural phase on interaural summation and inhibition. *The Journal of the Acoustical Society of America* 20: 536–544.
- Bernstein LR, Trahiotis C (1999) The effects of signal duration on $NoS0$ and $NoS\pi$ thresholds at 500 Hz and 4 kHz. *The Journal of the Acoustical Society of America* 105: 1776–1783.
- Blodgett HC, Jeffress LA, Taylor RW (1958) Relation of masked threshold to signal-duration for various interaural phase-combinations. *The American Journal of Psychology* 71: 283–290.
- Diercks KJ, Jeffress LA (1962) Interaural phase and the absolute threshold for tone. *The Journal of the Acoustical Society of America* 34: 981–984.
- Durlach NI, Gabriel KJ, Colburn HS, Trahiotis C (1986) Interaural correlation discrimination: II. Relation to binaural unmasking. *The Journal of the Acoustical Society of America* 79: 1548–1557.
- Egan JP (1965) Masking-level differences as a function of interaural disparities in intensity of signal and of noise. *The Journal of the Acoustical Society of America* 38: 1043–1049.
- Hafta ER, Carrier SC (1970) Masking-level differences obtained with a pulsed tonal masker. *The Journal of the Acoustical Society of America* 47: 1041–1047.
- Henning GB (1973) Effect of interaural phase on frequency and amplitude discrimination. *The Journal of the Acoustical Society of America* 54: 1160–1178.
- Langford TL, Jeffress LA (1964) Effect of noise crosscorrelation on binaural-signal detection. *The Journal of the Acoustical Society of America* 36: 1455–1458.
- McFadden D (1968) Masking-level differences determined with and without interaural disparities in masker intensity. *The Journal of the Acoustical Society of America* 44: 212–223.
- Robinson DE, Dolan TR (1972) Effect of signal frequency on the MLD for uncorrelated noise. *The Journal of the Acoustical Society of America* 51: 1945–1946.
- Sondhi MM, Guttman N (1966) Width of the spectrum effective in the binaural release of masking. *The Journal of the Acoustical Society of America* 40: 600–606–606.
- van de Par S, Kohlrausch A (1999) Dependence of binaural masking level differences on center frequency, masker bandwidth, and interaural parameters. *The Journal of the Acoustical Society of America* 106: 1940–1947.
- Yost WA (1988) The masking-level difference and overall masker level: Restating the internal noise hypothesis. *The Journal of the Acoustical Society of America* 83: 1517–1521.
- Garner WR, Miller GA (1947) The masked threshold of pure tones as a function of duration. *Journal of Experimental Psychology* 37: 293–303.
- Jeffress LA, Blodgett HC, Deatherage BH (1952) The masking of tones by white noise as a function of the interaural phases of both components. I. 500 cycles. *The Journal of the Acoustical Society of America* 24: 523–527.
- Metz P, von Bismarck G, Durlach N (1968) Further results on binaural unmasking and the EC model. II. Noise bandwidth and interaural phase. *The Journal of the Acoustical Society of America* 43: 1085–1091.
- Wightman FL (1971) Detection of binaural tones as a function of masker bandwidth. *The Journal of the Acoustical Society of America* 50: 623.

20. Jiang D, McAlpine D, Palmer AR (1997) Detectability index measures of binaural masking level difference across populations of inferior colliculus neurons. *Journal of Neuroscience* 17: 9331.
21. Jiang D, McAlpine D, Palmer AR (1997) Responses of neurons in the inferior colliculus to binaural masking level difference stimuli measured by rate-versus-level functions. *Journal of Neurophysiology* 77: 3085–3106.
22. Palmer AR, Jiang D, McAlpine D (2000) Neural responses in the inferior colliculus to binaural masking level differences created by inverting the noise in one ear. *Journal of Neurophysiology* 84: 844–852.
23. Guo Y, Burkard R (2003) The masking level difference in chinchilla auditory cortex. Effects of inner hair cell loss. *Hearing Research* 178: 12–26.
24. Fowler CG, Mikami CM (1992) The late auditory evoked potential masking-level difference as a function of noise level. *Journal of Speech, Language and Hearing Research* 35: 216–221.
25. Fowler CG, Mikami CM (1996) Phase effects on the middle and late auditory evoked potentials. *J Am Acad Audiol* 7: 23–30.
26. Pratt H (2007) Middle-latency Responses. In: Burkard RF, Eggermont JJ, Don M, editors. *Auditory evoked potentials: Basic principles and clinical application*: Lippincott Williams & Wilkins.
27. Wong WYS, Stapells DR (2004) Brain stem and cortical mechanisms underlying the binaural masking level difference in humans: An auditory steady-state response study. *Ear & Hearing* 25: 57–67.
28. Ishida I, Stapells D (2009) Does the 40-Hz auditory steady-state response show the binaural masking level difference? *Ear and Hearing* 30: 713.
29. Kimura D (1967) Functional asymmetry of the brain in dichotic listening. *Cortex* 3: 163–178.
30. Hugdahl K, Brønning K, Kyllingsbrk S, Law I, Gade A, et al. (1999) Brain activation during dichotic presentations of consonant-vowel and musical instrument stimuli: a 15O-PET study. *Neuropsychologia* 37: 431–440.
31. Hugdahl K, Law I, Kyllingsbæk S, Brønning K, Gade A, et al. (2000) Effects of attention on dichotic listening: An ¹⁵O-PET study. *Human Brain Mapping* 10: 87–97.
32. Bethmann A, Tempelmann C, De Bleser R, Scheich H, Brechmann A (2007) Determining language laterality by fMRI and dichotic listening. *Brain research* 1133: 145–157.
33. Hashimoto R, Homae F, Nakajima K, Miyashita Y, Sakai K (2000) Functional differentiation in the human auditory and language areas revealed by a dichotic listening task. *Neuroimage* 12: 147–158.
34. Jäncke L, Buchanan T, Lutz K, Shah N (2001) Focused and nonfocused attention in verbal and emotional dichotic listening: an fMRI study. *Brain and Language* 78: 349–363.
35. Jäncke L, Shah N (2002) Does dichotic listening probe temporal lobe functions? *Neurology* 58: 736.
36. Jäncke L, Specht K, Shah J, Hugdahl K (2003) Focused attention in a simple dichotic listening task: an fMRI experiment. *Cognitive Brain Research* 16: 257–266.
37. Lipschutz B, Kolinsky R, Damhaut P, Wikler D, Goldman S (2002) Attention-dependent changes of activation and connectivity in dichotic listening. *Neuroimage* 17: 643–656.
38. Thomsen T, Rimol L, Erslund L, Hugdahl K (2004) Dichotic listening reveals functional specificity in prefrontal cortex: an fMRI study. *Neuroimage* 21: 211–218.
39. Budd T, Hall DA, Gonçalves MS, Akeroyd MA, Foster JR, et al. (2003) Binaural specialisation in human auditory cortex: an fMRI investigation of interaural correlation sensitivity. *Neuroimage* 20: 1783–1794.
40. Chait M, Poeppel D, Simon J (2006) Neural response correlates of detection of monaurally and binaurally created pitches in humans. *Cerebral Cortex* 16: 835–848.
41. Hall DA, Plack CJ (2009) Pitch processing sites in the human auditory brain. *Cerebral Cortex* 19: 576–585.
42. Hall DA, Plack CJ (2007) The human "pitch center" responds differently to iterated noise and Huggins pitch. *Neuroreport* 18: 323–327.
43. Barker D, Plack CJ, Hall DA (2011) Reexamining the evidence for a pitch-sensitive region: A human fMRI study using iterated ripple noise. *Cerebral Cortex* 22: 745–763.
44. Puschmann S, Uppenkamp S, Kollmeier B, Thiel CM (2010) Dichotic pitch activates pitch processing centre in Heschl's gyrus. *Neuroimage* 49: 1641–1649.
45. Ernst S, Verhey JL, Uppenkamp S (2008) Spatial dissociation of changes of level and signal-to-noise ratio in auditory cortex for tones in noise. *Neuroimage* 43: 321–328.
46. Ernst S, Uppenkamp S, Verhey JL (2010) Cortical representation of release from auditory masking. *Neuroimage* 49: 835–842.
47. Edmister WB, Talavage TM, Ledden PJ, Weisskoff RM (1999) Improved auditory cortex imaging using clustered volume acquisitions. *Human Brain Mapping* 7: 89–97.
48. Hall DA, Haggard MP, Akeroyd MA, Palmer AR, Summerfield AQ, et al. (1999) "Sparse" temporal sampling in auditory fMRI. *Human Brain Mapping* 7: 213–223.
49. Luo W, Nichols T (2003) Diagnosis and exploration of massively univariate neuroimaging models. *Neuroimage* 19: 1014–1032.
50. Pollmann S, Maertens M, von Cramon D, Lepsien J, Hugdahl K (2002) Dichotic listening in patients with splenial and nonsplenial callosal lesions. *Neuropsychology-New York* 16: 56–64.
51. Reinvang I, Bakke S, Hugdahl K, Karlsen N, Sundet K (1994) Dichotic listening performance in relation to callosal area on the MRI scan. *Neuropsychology-New York* 8: 445–445.
52. Sugishita M, Otomo K, Yamazaki K, Shimizu H, Yoshioka M, et al. (1995) Dichotic listening in patients with partial section of the corpus callosum. *Brain* 118: 417.
53. Westerhausen R, Hugdahl K (2008) The corpus callosum in dichotic listening studies of hemispheric asymmetry: a review of clinical and experimental evidence. *Neuroscience and Biobehavioral Reviews* 32: 1044–1054.
54. Westerhausen R, Woerner W, Kreuder F, Schweiger E, Hugdahl K, et al. (2006) The role of the corpus callosum in dichotic listening: a combined morphological and diffusion tensor imaging study. *Neuropsychology-New York* 20: 272–279.
55. Hugdahl K (2003) Dichotic listening in the study of auditory laterality. In: Hugdahl K, Davidson R, editors. *The asymmetrical brain*. Cambridge, MA, USA: MIT Press. 441–475.
56. Ackermann H, Hertrich I, Mathiak K, Lutzenberger W (2001) Contralaterality of cortical auditory processing at the level of the M50/M100 complex and the mismatch field: A whole-head magnetoencephalography study. *NeuroReport* 12: 1683–1687.
57. Alain C, Arnott S, Hevenor S, Graham S, Grady C (2001) "What" and "where" in the human auditory system. *Proceedings of the National Academy of Sciences* 98: 12301–12306.
58. Maeder P, Meuli R, Adriani M, Bellmann A, Fornari E, et al. (2001) Distinct pathways involved in sound recognition and localization: a human fMRI study. *Neuroimage* 14: 802–816.
59. Rauschecker J, Tian B (2000) Mechanisms and streams for processing of "what" and "where" in auditory cortex. *Proceedings of the National Academy of Sciences of the United States of America* 97: 11800–11806.
60. Ungerleider LG, Mishkin M (1982) Two cortical visual systems. In: Ingle D, Goodale M, Mansfield R, editors. *Analysis of visual behavior*. Cambridge, MA, USA: MIT Press. 549–586.
61. Karbe H, Herholz K, Halber M, Heiss W (1998) Collateral inhibition of transcallosal activity facilitates functional brain asymmetry. *Journal of Cerebral Blood Flow & Metabolism* 18: 1157–1161.
62. Sokoloff L (1977) Relation between physiological function and energy metabolism in the central nervous system. *J Neurochem* 29: 13–26.
63. Tettamanti M, Paulesu E, Scifo P, Maravita A, Fazio F, et al. (2002) Interhemispheric transmission of visuomotor information in humans: fMRI evidence. *Journal of Neurophysiology* 88: 1051–1058.
64. Baran JA, Musiek FE, Reeves AG (1986) Central auditory function following anterior sectioning of the corpus callosum. *Ear and hearing* 7: 359–362.
65. Musiek F, Reeves A (1986) Effects of partial and complete corpus callosotomy on central auditory function. In: Lepore F, Puto M, Jasper H, editors. *Two Hemisphere One Brain Functions of the Corpus Callosum*. New York: Alan R. Liss, Inc. 423–434.
66. Sugishita M, Otomo K, Yamazaki K, Shimizu H, Yoshioka M, et al. (1995) Dichotic listening in patients with partial section of the corpus callosum. *Brain* 118: 417–427.
67. Hugdahl K, Wester K, Asbjørnsen A (1990) The role of the left and right thalamus in language asymmetry: Dichotic listening in Parkinson patients undergoing stereotactic thalamotomy. *Brain and Language* 39: 1–13.
68. Ojemann G (1975) Language and the thalamus: object naming and recall during and after thalamic stimulation. *Brain and Language* 2: 101–120.
69. Fitch R, Miller S, Tallal P (1997) Neurobiology of speech perception. *Annual Review of Neuroscience* 20: 331–353.
70. Egan J, Benson W (1964) Masking level differences for lateralization of a weak signal. *The Journal of the Acoustical Society of America* 36: 1992.
71. Townsend TH, Goldstein DP (1972) Suprathreshold binaural unmasking. *The Journal of the Acoustical Society of America* 51: 621–624.
72. Stark CEL, Squire LR (2001) When zero is not zero: the problem of ambiguous baseline conditions in fMRI. *Proceedings of the National Academy of Sciences* 98: 12760–12766.
73. Hart HC, Palmer AR, Hall DA (2004) Different areas of human non-primary auditory cortex are activated by sounds with spatial and nonspatial properties. *Human Brain Mapping* 21: 178–190.
74. Eimas P, Corbit J (1973) Selective adaptation of linguistic feature detectors. *Cognitive Psychology* 4: 99–109.
75. Sawusch J, Jusczyk P (1981) Adaptation and contrast in the perception of voicing. *Journal of Experimental Psychology: Human perception and performance* 7: 408–421.
76. van de Par S, Kohlrausch A (1998) Diotic and dichotic detection using multiplied-noise maskers. *The Journal of the Acoustical Society of America* 103: 2100–2110.