

A REPORT ON
ROMANO-BRITISH
CREMATED REMAINS FROM
YORK

By: Carrie L. Sulosky
October 2006

Table of Contents

	Page
Abstract	3
Introduction	4
Completeness	5
Total weight of cremated bone	5
Human Skeletal Inventory (skeletal regions present)	6
Non-Human Skeletal Elements Present	8
Minimum Number of Individuals (MNI)	9
Demography	10
Age Estimation	10
Sex Estimation	11
Health and Disease	12
Skeletal (non-dental) Health	12
Dental Health	13
Crematory Attributes	14
Efficacy of Cremation (colour)	14
Dehydration	17
Degree of Fragmentation	18
Burial Attributes	21
Type of Cremation Burial/Deposit	21
Pyre Debris	22
Pyre Goods	23
Grave Goods	24
Potential for Further Analysis	27
Conclusion	28
Appendix	30
Bibliography	129

Abstract

This report provides an osteological evaluation of 34 Romano-British cremation burials from York. The evaluation consists of a summary of the completeness, demography, state of health, crematory attributes and burial attributes of the assemblage, followed by a statement regarding the material's potential for further analysis. It is recommended that additional research be conducted on a positive impression of Roman cloth and that the data from the Trentholme Drive cremation burials be compared to that of the cemetery's inhumations in order to develop a complete demographic profile of the cemetery.

Introduction

York, originally called *Eboracum*, was founded by the Romans. It owes its beginnings to the Ninth Legion who built a fortress at the present site of the city *circa* 71 A.D. Shortly afterwards, a civilian settlement, which would later become a provincial capital, was founded at the site (Ottaway, 2004).

The aim of the following report is to provide an osteological analysis of 34 Romano-British cremation burials from York. Twenty-seven cremation burials are from the cemetery at Trentholme Drive (2nd to 4th century A.D.), one is from Appletree Farm, Heworth, another is from the Catterick Bypass, two were found beneath the current railway station (2nd to 4th century A.D.), two were from the railway bridge near Holgate and the context of the last burial is unknown to the author. All 34 cremation burials are housed at Yorkshire Museum and Gardens (Morrison, pers. comm.), and for the purposes of this report, they are separated into two groups: the York group, which is composed of all burials outside of Trentholme Drive, and the Trentholme Drive group, which naturally consists of the Trentholme Drive cremation burials. By discussing the groups separately, a more accurate picture of the Trentholme Drive cemetery can be obtained.

The osteological analysis was performed in alignment with the British Association for Biological Anthropology and Osteoarchaeology protocol (McKinley, 2004a), and the resulting report consists of an assessment of the cremation burials' completeness, demographic attributes, state of health, crematory attributes and burial attributes, followed by a statement regarding the material's potential for further analysis.

Completeness

Total Weight of Cremated Bone

The total weights of the cremated human remains are listed in Tables 1 and 2.

Table 1: The Total Weights (in grams) of the Cremated Human Remains Found in Each Cremation Burial (excluding burials from Trentholme Drive, burials listed by YORYM number)

YORYM	Total Weight
ABP, 3, 3	715.13
H1058	1001.04
H1059	410.83
H2280.1	665.59
HG214	314.18
1974.95	253.59
1980.54	1013.76

As can be seen in the table above, the total weights of the adult cremated human remains ranged from 314.18 g to 1013.76 g. In addition, the average total weight of cremated adult human remains was 624.87 g, which is less than what is expected from a modern adult cremation (1625.90 g) (McKinley, 1993). Furthermore, the total weights of the adult cremated human remains from Trentholme Drive (Table 2) ranged from 0.89 g to 1289.45 g with an average of 310.90 g, which is also below what is expected from a modern adult cremation.

Although one cannot make a direct comparison between modern and ancient populations because the average weight of a Romano-British adult cremation may have varied slightly from that of a modern adult, it may still be inferred that, on average, the remains of adult Romano-British cremated individuals from Yorkshire were not collected in their entirety for burial. This observation is in alignment with findings at other

Romano-British cremation cemeteries, such as Baldock Area 15, Low Borrowbridge and Caerleon Lodge Hill Cemetery (McKinley, 2004b).

Table 2: The Total Weights (in grams) of the Cremated Human Remains Found in Each Cremation Burial from Trentholme Drive (burials listed by YORYM number)

YORYM	Total Weight
1971.303 Year 2/52	176.91
1971.303 4	304.64
1971.303 19a	319.45
1971.303 77	0.89
1971.303 85b	1.75
1971.303 87	346.4
1971.303 88	8.4
1971.303 89b	20.75
1971.303 98	19.82
1971.303 119	495.75
1971.303 124b	513.03
1971.303 202*	27.91
1971.303 203	529.73
1971.303 205	274.82
1971.303 260	1289.45
1971.303 262	721.72
1971.303 273b	107.73
1971.303 280	378.68
1971.303 293*	793.65
1971.303 332	133.28
1971.303 396b or 398b	285.27
1971.303 403	740.25
1971.303 432	282.45
1971.303 475	16.15
1971.303 493	279.65
1971.303 523	84.22
1971.303 552	441.35

***denotes subadult individual**

Skeletal Inventory (skeletal regions present)

Cremation burial is a selective process, as an individual or group of individuals must take responsibility for collecting the cremated remains and depositing them in an

urn (McKinley and Bond, 2001). Consequently, cremated remains are rarely (if ever) collected in their entirety for burial. Signs of this selectivity were displayed in the cremation burials from both York and Trentholme Drive (Tables 3 and 4), as some of the burials did not include elements from every human skeletal region (skull, axial skeleton, upper limb, lower limb).

Table 3: Skeletal Regions Missing from the Cremation Burials (excluding the burials from Trentholme Drive)

YORYM	Skeletal Region(s) Missing
ABP, 3, 3	None
H1058	None
H1059	None
H2280.1	Lower Limb
HG214	Lower Limb
1974.95	Upper Limb
1980.54	None

Table 4: Skeletal Regions Missing from the Trentholme Drive Cremation Burials

YORYM	Skeletal Region(s) Missing
1971.303 Year 2/52	Upper Limb
1971.303 4	None
1971.303 19a	Upper Limb/Lower Limb
1971.303 77	All Bone Unidentified
1971.303 85b	All Bone Unidentified
1971.303 87	None
1971.303 88	Axial/Upper and Lower Limb
1971.303 89b	Axial/Upper and Lower Limb
1971.303 98	Axial/Upper and Lower Limb
1971.303 119	Upper Limb
1971.303 124b	Upper Limb
1971.303 202	Upper Limb/Lower Limb
1971.303 203	None
1971.303 205	None
1971.303 260	None
1971.303 262	None
1971.303 273b	Upper Limb
1971.303 280	None
1971.303 293	None
1971.303 332	None
1971.303 396b or 398b	Upper Limb/Lower Limb
1971.303 403	None
1971.303 432	None
1971.303 475	All Bone Unidentified
1971.303 493	None
1971.303 523	Upper Limb
1971.303 552	None

Non-Human Skeletal Elements Present

The non-human bone present in the cremation burials is tabulated in Tables 5 and

6.

**Table 5: The Non-Human Bone Present in Each Cremation Burial
(excluding the burials from Trentholme Drive)**

YORYM	Non-Human Bone Present
ABP, 3, 3	None
H1058	Pig, Bird, Unidentified Mammal
H1059	None
H2280.1	Bird
HG214	None
1974.95	None
1980.54	None

**Table 6: The Non-Human Bone Present in Each Cremation Burial from
Trentholme Drive**

YORYM	Non-Human Bone Present
1971.303 Year 2/52	None
1971.303 4	Bird
1971.303 19a	None
1971.303 77	None
1971.303 85b	None
1971.303 87	None
1971.303 88	Unburnt Chicken
1971.303 89b	None
1971.303 98	Bird
1971.303 119	None
1971.303 124b	Bird
1971.303 202	None
1971.303 203	None
1971.303 205	Cow
1971.303 260	Unidentified Mammal/Bird
1971.303 262	None
1971.303 273b	None
1971.303 280	None
1971.303 293	Unburnt Shrew (intrusive)
1971.303 332	None
1971.303 396b or 398b	Pig
1971.303 403	Galliform Bird/Unburnt Shrew
1971.303 432	Bird/Galliform Bird
1971.303 475	None
1971.303 493	None
1971.303 523	None
1971.303 552	None

Two of the cremation burials from York and ten of the burials from Trentholme Drive contained traces of non-human bone. Of those twelve burials, three from Trentholme Drive contained bone that was not cremated. In the first instance (1971.303 88), unburned chicken bone was recovered. This bone was either intrusive or the remnants of a grave good (a funerary offering buried with the human remains). The other burials (1971.303 293 and 1971.303 403) contained intrusive shrew bones. Since the colour of these remains (brown) revealed that the bones were archaeological, it is likely that the lid of the urn was disturbed in the past, which allowed the shrew bones to fall into the urn and become commingled with the human remains.

The rest of the burials contained cremated unidentified mammal, bird, galliform bird, pig and cow bones. These bones were either the remnants of the funerary feast that were thrown on the burning pyre or were funerary offerings that were incinerated with the corpse (pyre goods).

Minimum Number of Individuals (MNI)

A MNI was assigned to each cremation burial after the human skeletal remains were examined for age-related discrepancies in bone size and development, and for duplications of skeletal elements. At the conclusion of the examination, it was found that each burial contained at least one individual.

Demography

Age Estimation

The ages of the cremated individuals were estimated using unerupted tooth crowns (Smith, 1991), epiphyseal fusion (Schwartz, 1995), cranial suture closure (Meindl and Lovejoy, 1985), pubic symphyses (Brooks and Suchey, 1990) and auricular surfaces (Lovejoy *et al.*, 1985).

Table 7: Estimated Ages (in years) of the Cremated Individuals (excluding burials from Trentholme Drive)

YORYM	Estimated Age
ABP, 3, 3	Adult 20+ years
H1058	Old Adult 50+ years
H1059	Mid to Late Adult 35+ years
H2280.1	Adult 21+ years
HG214	Adult 21 + years
1974.95	Adult 21 + years
1980.54	Adult 21 + years

Table 8: Estimated Ages (in years) of the Cremated Individuals from Trentholme Drive

YORYM	Estimated Age
1971.303 Year 2/52	Adult 21+ years
1971.303 4	Undetermined
1971.303 19a	Undetermined
1971.303 77	Undetermined
1971.303 85b	Undetermined
1971.303 87	Adult 20+ years
1971.303 88	Undetermined
1971.303 89b	Undetermined
1971.303 98	Undetermined
1971.303 119	Adult 21+ years
1971.303 124b	Adult 20+ years
1971.303 202	Subadult < 8 years
1971.303 203	Adult 20+ years
1971.303 205	Old Adult 50+ years
1971.303 260	Mid Adult 35+ years
1971.303 262	Mid Adult 35+ years
1971.303 273b	Adult 21+ years
1971.303 280	Adult 20+ years
1971.303 293	Subadult < 16-17 years
1971.303 332	Adult 20+ years
1971.303 396b or 398b	Adult 21+ years
1971.303 403	Adult 21+ years
1971.303 432	Mid Adult 32+ years
1971.303 475	Undetermined
1971.303 493	Adult 21+ years
1971.303 523	Undetermined
1971.303 552	Adult 20+ years

As Tables 7 and 8 show, all of the York cremation burials were adults, while two of the Trentholme Drive burials (1971.303 202 and 1971.303 293) were subadults and the rest were adults.

Sex Estimation

The sexes of the individuals were assigned (where possible) using morphological observations (Bass, 2005). Unfortunately, the difficulties that are inherent in assigning sex to cremated remains (i.e. the differential shrinkage of metric variables allows for the misclassification of cremated material) (Thompson, 2002) complicated the determination of the sex of most of the burials. Therefore, the possible (not definite) sex of only one individual (1971.303 403) could be ascertained, and based on its robust muscle attachments, it is estimated that the individual was a possible male.

Health and Disease

Skeletal (non-dental) Health

The pathological lesions present on the cremated remains reveal the state of the individuals' health at the time of death, and are not accurate indicators of the individuals' entire medical histories (Roberts and Cox, 2003). Hence, the conclusions drawn here focus on the diseases' perimortem presence or absence and not on their severity or duration. Furthermore, because cremated remains are incomplete and heavily fragmented, it is difficult to detect all instances of pathological lesions; therefore, it is probable that the total number of affected individuals is under-represented, and that some of the affected individuals were afflicted with additional pathologies (McKinley, 2004a).

With that in mind, the cremated human skeletal remains were examined for evidence of trauma and infection as well as joint, congenital, metabolic and neoplastic diseases. The results of the pathological analysis (Tables 9 and 10) revealed that at the time of death three individuals from York and nine individuals from Trentholme Drive were afflicted with degenerative joint disease, one additional individual from Trentholme Drive was afflicted with periostitis of an unidentified long bone, and another individual from Trentholme Drive was afflicted with both degenerative joint disease and periostitis of an unidentified long bone.

**Table 9: Inventory of the Skeletal Health of the Cremation Burials
(excluding those from Trentholme Drive)**

YORYM	Skeletal Pathology
ABP, 3, 3	None
H1058	Degenerative Joint Disease
H1059	None
H2280.1	Degenerative Joint Disease
HG214	None
1974.95	None
1980.54	Degenerative Joint Disease

Table 10: Inventory of the Skeletal Health of the Cremation Burials from Trentholme Drive

YORYM	Skeletal Pathology
1971.303 Year 2/52	None
1971.303 4	None
1971.303 19a	Periostitis on unidentified long bone
1971.303 77	None
1971.303 85b	None
1971.303 87	None
1971.303 88	None
1971.303 89b	None
1971.303 98	None
1971.303 119	Degenerative Joint Disease
1971.303 124b	None
1971.303 202	None
1971.303 203	None
1971.303 205	None
1971.303 260	Degenerative Joint Disease
1971.303 262	Degenerative Joint Disease
1971.303 273b	Degenerative Joint Disease
1971.303 280	Degenerative Joint Disease
1971.303 293	Degenerative Joint Disease
1971.303 332	Degenerative Joint Disease
1971.303 396b or 398b	None
1971.303 403	DJD/Periostitis on unident. long bone
1971.303 432	Degenerative Joint Disease
1971.303 475	None
1971.303 493	Degenerative Joint Disease
1971.303 523	None
1971.303 552	None

DJD= Degenerative Joint Disease

Dental Health

Only one individual (Trentholme Drive 1971.303 262) displayed signs of dental pathology. Prior to death, this individual had lost a mandibular tooth (antemortem tooth loss), and at the time of death the individual's jaw was completely healed (alveolar resorption). However, as is the case with skeletal health, it is probable that the total number of affected individuals is under-represented, and that the affected individual was afflicted with additional dental pathologies (McKinley, 2004a).

Crematory Attributes

Efficacy of Cremation

Colour is a macroscopic indicator of oxidization, as brown or orange bones are unburned and black ones are charred (*c.* 300°C), while hues of blue and grey are indicative of incomplete oxidization (up to *c.* 600°C), and white bones are completely oxidized (*c.* >600°C) (McKinley, 2004a). Therefore, based on its range of colours, the burials were assigned an efficacy of cremation score on a scale of 0-4, which included increments of 0.5 to indicate when a burial's level of oxidization fell between two established categories (e.g. a score of 2.5 would mean that the oxidization of the burial was between categories 2 and 3). The scoring system was devised by the author and is described in Figures 1-5.



Figure 1 Colour Score 0:
Unburned bone ranging from brown to orange (distal femur from the University of Sheffield's osteology teaching collection) (Photography by Carrie Sulosky)



Figure 2 Colour Score 1:
A high percentage of the cortical and trabecular bone is black, although some bones may be white or hues of blue and grey (remains from a Lincoln cremation burial, brown residue is encrusted soil) (Photography by Carrie Sulosky)



Figure 3 Colour Score 2:
Cortical bone is mostly white with patches exhibiting shades of grey, while the trabecular bone is primarily black or hues of grey (remains from a York cremation burial)
(Photography by Carrie Sulosky)

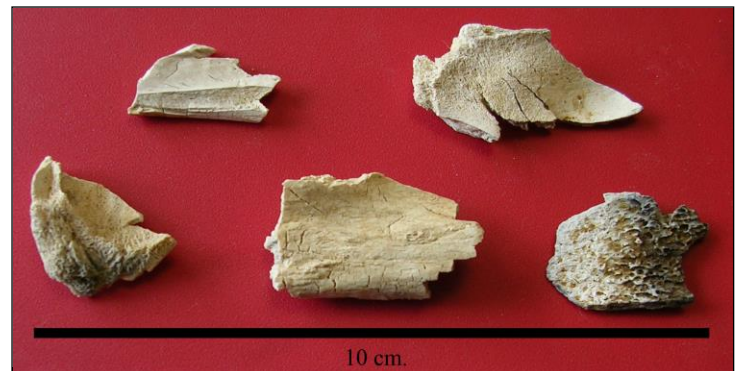


Figure 4 Colour Score 3:
Cortical bone is white and trabecular bone is mostly white with grey patches (remains from a Lincoln cremation burial)
(Photography by Carrie Sulosky)



Figure 5 Colour Score 4:
Cortical and trabecular bone are completely oxidized and white in colour, trabecular bone is often very fragile (British Bronze Age cremation burial, the dark hues are caused by soil staining)
(Photography by Carrie Sulosky)

The colour scores of the cremation burials can be seen in Tables 11 and 12. The York scores ranged from 2 to 3 with an average of 2.5, while the Trentholme Drive scores ranged from 1.5 to 3.5 with an average of 2. These scores indicate that both assemblages were incompletely oxidized. Incomplete oxidization (which is typical of

Romano-British cremation burials) is caused by the restriction of a cremation's burning time, oxygen supply or temperature (McKinley, 2004b).

**Table 11: Colour Scores of the Cremation Burials
(excluding those from Trentholme Drive)**

YORYM	Colour Score
ABP, 3, 3	2
H1058	3
H1059	3
H2280.1	2.5
HG214	2
1974.95	3
1980.54	2.5

Table 12: Colour Scores of the Trentholme Drive Cremation Burials

YORYM	Colour Score
1971.303 Year 2/52	1.5
1971.303 4	1.5
1971.303 19a	2
1971.303 77	Too few bone fragments
1971.303 85b	Too few bone fragments
1971.303 87	1.5
1971.303 88	3.5
1971.303 89b	3
1971.303 98	2
1971.303 119	2.5
1971.303 124b	1.5
1971.303 202	2
1971.303 203	3
1971.303 205	1.5
1971.303 260	2.5
1971.303 262	2.5
1971.303 273b	3.5
1971.303 280	2.5
1971.303 293	1.5
1971.303 332	1.5
1971.303 396b or 398b	2.5
1971.303 403	2.5
1971.303 432	3
1971.303 475	2.5
1971.303 493	2.5
1971.303 523	2
1971.303 552	2

Dehydration

Dehydration during the process of cremation causes bones to shrink, fissure and warp in characteristic patterns (McKinley, 2004a: 11). Since this generally happens in a uniform way, it is only necessary to record abnormal cases of each.

**Table 13: Dehydration Abnormalities Found in Cremated Remains
(excluding those from Trentholme Drive)**

YORYM	Shrinkage	Fissuring	Warping
ABP, 3, 3	Very little shrinkage	None	Long Bones
H1058	None	None	Long Bones/Skull
H1059	None	None	Long Bones
H2280.1	None	None	Long Bones
HG214	None	None	Long Bones
1974.95	Less shrinkage on femur/pelvis	None	Long Bones
1980.54	Sternal clavicle larger than acromial/ 1 femoral head/shaft larger than other	Acromial end of clavicle more fissured than sternal end	Long Bones/Skull

**Table 14: Dehydration Abnormalities Found in Cremated Remains From
Trentholme Drive**

YORYM	Shrinkage	Fissuring	Warping
1971.303 Year 2/52	One rib exhibits very little shrinkage	None	Long Bones
1971.303 4	None	None	Long Bones
1971.303 19a	None	None	Long Bones
1971.303 77	None	None	None
1971.303 85b	None	None	None
1971.303 87	None	None	None
1971.303 88	None	None	None
1971.303 89b	None	None	None
1971.303 98	None	None	Long Bones
1971.303 119	None	None	Long Bones/Skull
1971.303 124b	None	None	Long Bones/Skull
1971.303 202	None	None	None
1971.303 203	None	None	Long Bones/Skull
1971.303 205	None	None	Long Bones
1971.303 260	None	None	Long Bones/Skull
1971.303 262	None	None	Long Bones/Skull
1971.303 273b	None	None	Long Bones
1971.303 280	None	None	Long Bones
1971.303 293	None	None	Long Bones
1971.303 332	None	None	Long Bones
1971.303 396b or 398b	None	None	Long Bones/Skull
1971.303 403	None	None	Long Bones
1971.303 432	None	None	Long Bones
1971.303 475	None	None	None
1971.303 493	None	None	Long Bones
1971.303 523	None	None	Skull
1971.303 552	None	None	Long Bones/Skull

As Tables 13 and 14 show, there were three cases of abnormal shrinkage in the cremation burials from York and one case in the burials from Trentholme Drive. The first instance from York (ABP 3,3) implies that the corpse was not burned at a high temperature, since the cremated remains displayed very little shrinkage. In addition, the differential shrinkage of certain skeletal elements in burials 1974.95 and 1980.54 suggests that the bones which possessed a higher degree of shrinkage were burned at a higher temperature than their counterparts. Likewise, the one example of abnormal shrinkage from Trentholme Drive (1971.303 Year 2/52) also insinuates that one rib was burned at a lower temperature than the rest of the body, causing it to exhibit less shrinkage. These varying temperatures may have been due to airflow restriction, for as the pyre burns down, body parts tend to shift position and burn unevenly.

For the most part, the fissuring and warping displayed by the cremation burials were not out of the ordinary. First, only one of the cremation burials (1980.54) exhibited any abnormal instances of fissuring, which is directly related to the differential shrinkage of the cremated remains (i.e. the acromial end of the clavicle, which was more thoroughly burned, was also more thoroughly fissured). Additionally, even though many of the burials contained warped remains, it is common to find examples of abnormal warping within any given cremation burial.

Degree of Fragmentation

Degree of fragmentation, represented by the percentage of bone sieved into a 10 mm fraction, was recorded in Tables 15 and 16 along with the length of the largest bone fragment.

Table 15: Degree of Fragmentation and Length of the Largest Bone Fragment of the Cremation Burials (excluding those from Trentholme Drive)
[DoF= Degree of fragmentation (a percentage);
LLBF= Length of the largest bone fragment (in millimetres)]

YORYM	DoF (%)	LLBF (mm)
ABP, 3, 3	78%	92.7 mm
H1058	77%	84.8 mm
H1059	56%	87 mm
H2280.1	43%	53.1 mm
HG214	19%	37 mm
1974.95	88%	94.6 mm
1980.54	69%	79.1 mm

Table 16: Degree of Fragmentation and Length of the Largest Bone Fragment of the Cremation Burials from Trentholme Drive
[DoF= Degree of fragmentation (a percentage);
LLBF= Length of the largest bone fragment (in millimetres)]

YORYM	DoF (%)	LLBF (mm)
1971.303 Year 2/52	68%	53.8 mm
1971.303 4	76%	65 mm
1971.303 19a	34%	28.6 mm
1971.303 77	Data not sufficient	Data not sufficient
1971.303 85b	Data not sufficient	Data not sufficient
1971.303 87	71%	57.4 mm
1971.303 88	11%	22.4 mm
1971.303 89b	17%	28.4 mm
1971.303 98	69%	38.1 mm
1971.303 119	60%	53.6 mm
1971.303 124b	65%	73.2 mm
1971.303 202	68%	38.4 mm
1971.303 203	63%	61.9 mm
1971.303 205	67%	56.3 mm
1971.303 260	71%	92.4 mm
1971.303 262	55%	37.3 mm
1971.303 273b	93%	59.1 mm
1971.303 280	67%	64.4 mm
1971.303 293	50%	49.2 mm
1971.303 332	66%	38.6 mm
1971.303 396b or 398b	63%	40 mm
1971.303 403	68%	101 mm
1971.303 432	75%	89.8 mm
1971.303 475	8%	28.1 mm
1971.303 493	87%	65.8 mm
1971.303 523	44%	24.2 mm
1971.303 552	64%	72.9 mm

The average degree of fragmentation of the York cremation burials was 61% and the average length of the largest bone fragment was 75.5 mm, while the Trentholme Drive average degree of fragmentation was 59% and the average length of the largest bone fragment was 53.6 mm. However, as McKinley cautions, post-depositional contact with soil will cause additional fragmentation due to the soil's moisture levels and freeze/thaw cycles (2004b) and the 'fragment sizes presented in reports should be regarded as *post-excavation* fragment sizes, rather than a reliable indicator of the size of bone fragments at time of deposition' (1994b: 339). Consequently, it is probable that the cremation burials experienced further fragmentation not only while they were still buried, but also during excavation and post-excavation handling; therefore concrete conclusions cannot be drawn from this data.

Burial Attributes

Type of Cremation Burial/Deposit

As Table 17 shows, all but one of the York cremation burials were urned. Burial 1974.95, however, was unurned. Additionally, seven of the Trentholme Drive cremation burials were urned, one was unurned, and the context of 19 were unknown (Table 18).

**Table 17: Type of Cremation Burial/Deposit of Each Burial
(excluding those from Trentholme Drive)**

YORYM	Type of Cremation Burial/Deposit
ABP, 3, 3	Urned Burial
H1058	Urned Burial
H1059	Urned Burial
H2280.1	Urned Burial
HG214	Urned Burial
1974.95	Unurned Burial
1980.54	Urned Burial

Table 18: Type of Cremation Burial/Deposit of Each Burial from Trentholme Drive

YORYM	Type of Cremation Burial/Deposit
1971.303 Year 2/52	Unknown
1971.303 4	Urned Burial
1971.303 19a	Urned Burial
1971.303 77	Unknown
1971.303 85b	Unknown
1971.303 87	Unknown
1971.303 88	Urned Burial
1971.303 89b	Unknown
1971.303 98	Unknown
1971.303 119	Urned Burial
1971.303 124b	Unknown
1971.303 202	Unknown
1971.303 203	Urned Burial
1971.303 205	Unknown
1971.303 260	Unknown
1971.303 262	Urned Burial
1971.303 273b	Unknown
1971.303 280	Unknown
1971.303 293	Unknown
1971.303 332	Unknown
1971.303 396b or 398b	Unknown
1971.303 403	Urned Burial
1971.303 432	Unknown
1971.303 475	Unknown
1971.303 493	Unknown
1971.303 523	Unurned Burial
1971.303 552	Unknown

The Presence of Pyre Debris

Pyre debris is commonly recovered from Romano-British cremation burials (McKinley, 2004b), and it was present, in the form of charcoal, in four burials from York (Table 19) and 13 burials from Trentholme Drive. Additionally, two burials from Trentholme Drive possessed only slag, while another two contained both charcoal and slag.

Table 19: Type of Pyre Debris Present in the Cremation Burials (excluding those from Trentholme Drive)

YORYM	Type of Pyre Debris Present
ABP, 3, 3	None
H1058	Charcoal
H1059	Charcoal
H2280.1	Charcoal
HG214	None
1974.95	Charcoal
1980.54	None

Table 20: Type of Pyre Debris Present in the Trentholme Drive Cremation Burials

YORYM	Type of Pyre Debris Present
1971.303 Year 2/52	None
1971.303 4	None
1971.303 19a	Charcoal
1971.303 77	Charcoal
1971.303 85b	Charcoal
1971.303 87	Charcoal
1971.303 88	Charcoal
1971.303 89b	Charcoal/Slag
1971.303 98	None
1971.303 119	Slag
1971.303 124b	None
1971.303 202	None
1971.303 203	Charcoal
1971.303 205	Charcoal
1971.303 260	Charcoal
1971.303 262	Charcoal
1971.303 273b	None
1971.303 280	Charcoal
1971.303 293	Charcoal/Slag
1971.303 332	Charcoal
1971.303 396b or 398b	Charcoal
1971.303 403	Charcoal
1971.303 432	None
1971.303 475	None
1971.303 493	Slag
1971.303 523	None
1971.303 552	None

The Presence of Pyre Goods

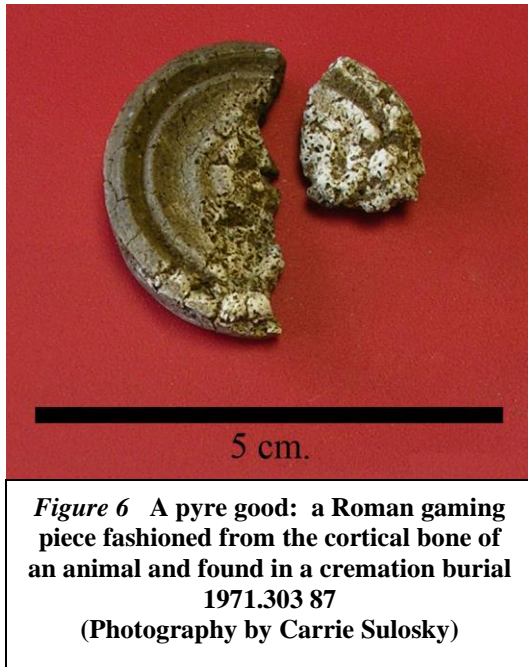
Tables 21 and 22 list the pyre goods present in the cremation burials from York and Trentholme Drive respectively.

**Table 21: Type of Pyre Goods Present in the Cremation Burials
(excluding those from Trentholme Drive)**

YORYM	Type of Pyre Goods Present
ABP, 3, 3	None
H1058	Ceramic/Nails/Glass/Metal
H1059	Metal
H2280.1	Ceramic
HG214	Ceramic
1974.95	None
1980.54	Glass

Table 22: Type of Pyre Goods Present in the Cremation Burials from Trentholme Drive

YORYM	Type of Pyre Goods Present
1971.303 Year 2/52	None
1971.303 4	None
1971.303 19a	None
1971.303 77	None
1971.303 85b	None
1971.303 87	Ceramic, lead ball, game piece
1971.303 88	None
1971.303 89b	None
1971.303 98	None
1971.303 119	None
1971.303 124b	None
1971.303 202	None
1971.303 203	None
1971.303 205	None
1971.303 260	Metal (iron?), ceramic
1971.303 262	Nails (from wooden box?)
1971.303 273b	Ceramic
1971.303 280	Ceramic
1971.303 293	Ceramic
1971.303 332	Ceramic
1971.303 396b or 398b	None
1971.303 403	None
1971.303 432	None
1971.303 475	Sea shell
1971.303 493	None
1971.303 523	None
1971.303 552	Mortar



Pyre goods are offerings to and personal belongings of the corpse which are placed on the pyre and burned along with the body. These objects range from perishable (e.g. wooden objects, amber or foodstuffs) to non-perishable goods (e.g. ceramic, glass, metal, stone, worked animal bone). Non-perishable pyre goods are identifiable because they show signs of exposure to heat (e.g. charring, melting), whereas perishable goods are generally destroyed by the fire. As a result, the amount of pyre

goods is typically underestimated because it does not account for the presence of perishable pyre goods (McKinley, 1994a). Therefore, even though the individuals were most likely burned with additional goods that were not preserved in the archaeological record, the York cremation burials contained traces of glass, metal (including nails that may have come from shoes or a wooden box) and ceramic pyre goods, while the Trentholme Drive burials possessed pyre goods which consisted of ceramic, metal (including nails), a lead ball, a gaming piece made from the cortical bone of an animal (Figure 6) and sea shell.

The Presence of Grave Goods

The grave goods found with the cremation burials are recorded in Tables 23 and 24.

**Table 23: Type of Grave Goods Present in the Cremation Burials
(excluding those from Trentholme Drive)**

YORYM	Type of Grave Goods Present
ABP, 3, 3	Ceramic
H1058	Positive impression of shrouding? cloth, ceramic
H1059	None
H2280.1	None
HG214	Glass--from urn?
1974.95	None
1980.54	None

Table 24: Type of Grave Goods Present in the Cremation Burials from Trentholme Drive

YORYM	Type of Grave Goods Present
1971.303 Year 2/52	Ceramic
1971.303 4	Ceramic-- from urn?
1971.303 19a	Ceramic
1971.303 77	None
1971.303 85b	None
1971.303 87	None
1971.303 88	Ceramic-- from urn?
1971.303 89b	None
1971.303 98	Ceramic
1971.303 119	None
1971.303 124b	None
1971.303 202	None
1971.303 203	Ceramic
1971.303 205	Ceramic
1971.303 260	None
1971.303 262	None
1971.303 273b	None
1971.303 280	None
1971.303 293	None
1971.303 332	None
1971.303 396b or 398b	None
1971.303 403	Glass
1971.303 432	None
1971.303 475	None
1971.303 493	None
1971.303 523	None
1971.303 552	Ceramic

Grave goods are objects that are buried with the cremated remains either inside of outside of the urn. None of the cremation burials possessed intact grave goods; on the contrary, there were only fragments of unburned ceramic and glass in the York burials, while the Trentholme Drive burials contained fragments of ceramic and glass. Although it is very likely that these are the remnants of grave goods, it is also possible that they were intrusive or that some of the ceramic sherds were from the urn itself.

Furthermore, burial H1058 yielded a finding that was of particular interest. Within this burial was soil, specifically a

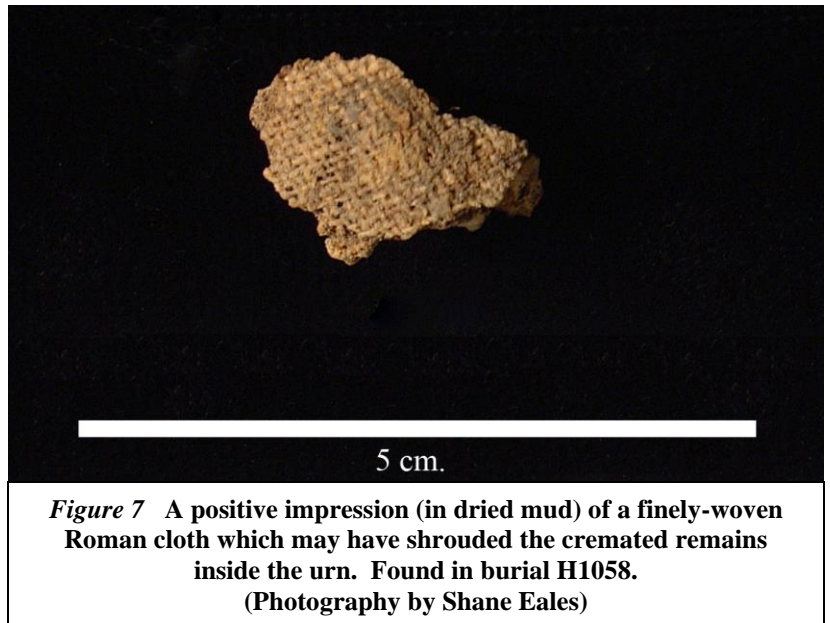


Figure 7 A positive impression (in dried mud) of a finely-woven Roman cloth which may have shrouded the cremated remains inside the urn. Found in burial H1058. (Photography by Shane Eales)

clump of dried mud, which contained the positive impression of a finely-woven Roman cloth (Figure 7). Therefore, at the time of burial, there was a piece of cloth which either shrouded the cremated remains inside the urn or was placed inside the urn as a grave good. At some point, the lid of the urn was disturbed and mud fell inside. This mud pressed against the cloth and created a negative impression of it. The mud then dried, and essentially became a mould. Thus, as the cloth deteriorated (no traces of it were found in the cremation burial) and new mud pressed against the ‘mould,’ a positive impression of the cloth was created. This impression provides not only an example of a Roman textile, but also the possibility that the cremated remains of some burials were shrouded when they were placed inside of the urn.

Potential for Further Analysis

Although this report provides a complete osteological analysis of the assemblage, the research potential of the cremation burials has not been exhausted. First, it is recommended that the data from the Trentholme Drive cremation burials be examined together with the cemetery's inhumation data in order to create a complete demographic profile of the cemetery. This would be useful because it would not only increase our understanding of Romano-British cemeteries, but also allow us a further glimpse into the lives (and deaths) of the people who inhabited Yorkshire. Furthermore, the discovery of the positive impression of a cloth (burial H1058) raises some interesting questions. For example: Did the Romans commonly shroud their cremated remains, or was it a regional practice? Was cloth typically offered as a grave good? Further research is required in order to answer these questions.

Conclusion

In conclusion, the York cremation burials were mostly urned and possessed traces of charcoal (pyre debris); glass, nails, unidentified metal, and ceramic (pyre goods); ceramic, cloth, and glass (grave goods); as well as bird, pig, and unidentified animal bone. Each burial contained at least one individual, but did not include elements from all human skeletal regions. Nevertheless, all of the individuals were adults whose sexes could not be determined, and three of them were afflicted with degenerative joint disease at the time of death. Furthermore, all of the burials were incompletely oxidized, had an average degree of fragmentation of 61%, and the average length of the largest bone fragment found amongst them was 75.5 mm. Finally, the average weight of the adult cremated remains was 624.87 g, which was less than what is expected from a modern adult cremation.

The burials from Trentholme Drive were mostly of unknown burial context and possessed traces of charcoal and slag (pyre debris); a lead ball, a game piece, metal nails, mortar, sea shells, and ceramic (pyre goods); ceramic and glass (grave goods); as well as bird, pig, cow, unburned chicken, unburned shrew, and unidentified animal bone. Each burial contained at least one individual, but did not include elements from all human skeletal regions. Two of the individuals were subadults, while the rest were adults. The sexes of the individuals were difficult to ascertain, and the one that could be estimated was deemed to be a possible male. At the time of death, eight individuals were afflicted with degenerative joint disorder, one was afflicted with periostitis of an unidentified long bone, another was afflicted both periostitis of an unidentified long bone as well as degenerative joint disease, and one was afflicted with degenerative joint disease and

antemortem tooth loss. Furthermore, all of the burials were incompletely oxidized, had an average degree of fragmentation of 59%, and the average length of the largest bone fragment found amongst them was 53.6 mm. Finally, the average weight of the adult cremated remains was 310.9 g, which was less than what is expected from a modern adult cremation.

On the whole, this York and Trentholme Drive assemblages display characteristics that are typical of Romano-British cremation burials and provide important information regarding the lifeways and funerary customs of the Romano-British individuals inhabiting Yorkshire.

Appendix

Cremation Recording Forms

Burial #: ABP, 3, 3	Date: 3/6/06	Observer: Carrie Sulosky
Estimated Sex: ----	Estimated Age: Adult 20+ years	Estimated MNI: 1

Context: Urned cremation burial from greyware vessel

Total weight of cremated materials: 770.96 g **Total weight of non-human bone:** 0 g

Total weight of cremated human bone: 715.13 g **Dimensions of largest fragment:** 92.7 x 26.6 mm

Weight fractions: >10mm: 555.68 g 10-5mm: 139.78 g 5-2mm: 10.55 g 2-1mm: 9.12 g

Colour ranges: Mostly white; some patches of light grey on the cortical bone; dark grey on most of the trabecular bone

Shrinkage: Overall, very little shrinkage

Fissuring: No instances of abnormal fissuring

Warping: Warping visible on some long bones

Identifiable Fragments Present in Each Sieve Fraction:

Skull: > 10 mm—52 cranial fragments
 10-5 mm—56 cranial fragments, 3 tooth roots

Axial Skeleton: > 10 mm—13 rib fragments, 9 vertebrae fragments
10-5 mm—rib fragments

Upper Limb: > 10 mm—1 humerus fragment, 2 radius fragments

Lower Limb: > 10 mm—3 femur fragments, 6 tibia fragments

Duplicated elements: None

Age Indicators: Vertebral arches fused to body and trans. arch \leq 20 years (Schwartz, 1995)

Sex Indicators: None

Pathological Data: None

Pyre goods: None

Grave Goods: > 10 mm—ceramic

Pyre Debris: None

Identifiable non-human bone: None

Inventory of Finds Bags

> 10 mm:	Cranial
	Axial: vertebrae, rib
	Upper limb: humerus, radius
	Lower limb: femur, tibia
	Unidentified human bone
	Unidentified human long bone
	Ceramic
10-5 mm:	Soil with traces of human bone
	Axial skeleton: rib
	Unidentified human bone
	Unidentified human long bone
2 mm:	Cranial and tooth roots
	Unidentified human bone
< 2 mm:	Soil with traces of human bone
	Residue and traces of human bone

Burial #: H1058—near Holgate, Railway Bridge	Date: 14/6/06	Observer: Carrie Sulosky
Estimated Sex: ----	Estimated Age: Old adult 50+ years	Estimated MNI: 1

Context: Urned cremation burial from lead vessel

Total weight of cremated materials: 1495.56 g **Total weight of non-human bone:** 22.6 g

Total weight of cremated human bone: 1001.04 g **Dimensions of largest fragment:** 84.8 x 59 mm

Weight fractions: >10mm: 768.48 g 10-5mm: 93.66 g 5-2mm: 66.79 g 2-1mm: 72.11 g

Colour ranges: Mostly white; some patches of light grey on the cortical bone of the skull and the
throughout the trabecular bone; iron residue found on most of the bones

Shrinkage: No instances of abnormal shrinkage

Fissuring: No instances of abnormal fissuring

Warping: Warping visible on some long bones and the skull

Identifiable Fragments Present in Each Sieve Fraction:

Skull: > 10 mm—98 cranial fragments (count includes mandible fragments and tooth roots)
 10-5 mm—67 cranial fragments, 10 tooth roots

Axial Skeleton: > 10 mm—58 rib fragments, 32 vertebrae fragments, 1 sacrum fragment
 10-5 mm—80 rib fragments, 7 vertebrae fragments

Upper Limb: > 10 mm—4 humerus fragments, 2 scapula fragments, 1 metacarpal head, 3 hand phalanges (fragments)
 10-5 mm—7 hand phalanges (fragments), 4 metacarpal heads

Lower Limb: > 10 mm—2 femur fragments, 5 tibia fragments, 1 metatarsal head, 2 talus fragments, 16 pelvis fragments
 10-5 mm—2 metatarsal heads, 2 foot phalanges (fragments)

Duplicated elements: None

Age Indicators: Fully formed M3 (wisdom tooth) roots—adult (Schwartz, 1995)

Sex Indicators: None

Pathological Data: > 10 mm—compressed vertebra with horizontal osteophytes—degenerative joint disease

Pyre goods: > 10 mm—grey ceramic, iron nails (2 small, 1 large) melted to unidentified bone and skull vault
 2 mm—red glass, some light blue staining (indicative of copper?)

Grave Goods: > 10 mm— soil (dried mud) with positive fabric imprint—the fabric (a fine Romano-British weave) was probably used to shroud the bones and has since disintegrated
 2 mm—positive fabric imprint, peach-coloured ceramic

Pyre Debris: > 10 mm—charcoal
 2 mm—charcoal

Identifiable non-human bone: > 10 mm—cremated pig with unfused epiphyses and other mammal bone
(possibly pig)
10-5 mm—cremated bird bone

Inventory of Finds Bags

> 10 mm:	Cranial (tooth root with maxilla) Axial: vertebrae, rib, sacrum Upper limb: humerus, scapula, metacarpal, hand phalanges Lower limb: femur, tibia, talus, metatarsal, pelvis Unidentified human bone Unidentified human long bone Grey ceramic Iron nails Soil with traces of human bone (fabric imprint)
10-5 mm:	Axial skeleton: rib, vertebrae Unidentified human bone Unidentified human long bone Cranial, tooth roots Bird bone Charcoal Lower Limb: metatarsal, foot phalanges Upper Limb: metacarpal, hand phalanges Soil and bone fragments
2 mm:	Unidentified human bone Soil with traces of human bone Charcoal Red glass Fabric imprint Peach ceramic
< 2 mm:	Residue and traces of human bone

Burial #: H105—Railway Excavations, 1846	Date: 4/6/06	Observer: Carrie Sulosky
Estimated Sex: ----	Estimated Age: Adult 25+ years, probably mid to late adult	Estimated MNI: 1

Context: Urned cremation burial from lead vessel

Total weight of cremated materials: 505.31 g **Total weight of non-human bone:** 0 g

Total weight of cremated human bone: 410.83 g **Dimensions of largest fragment:** 87 x 16.4 mm

Weight fractions: >10mm: 229.84 g 10-5mm: 79.41 g 5-2mm: 76.23 g 2-1mm: 25.35 g

Colour ranges: Mostly white; some patches of light grey on the cortical bone of the long bone shafts and throughout the trabecular bone (some trabecular bone solid light grey, some tinged light grey)

Shrinkage: No instances of abnormal shrinkage

Fissuring: No instances of abnormal fissuring

Warping: Warping visible on some long bones

Identifiable Fragments Present in Each Sieve Fraction:

Skull: > 10 mm—33 cranial fragments
 10-5 mm—51 cranial fragments, 1 tooth with heavy attrition

Axial Skeleton: > 10 mm—6 rib fragments, 10 vertebrae fragments
 10-5 mm—26 rib fragments, 9 vertebrae fragments

Upper Limb: > 10 mm—1 humerus fragment, 1 radius fragment, 1 metacarpal fragment

Lower Limb: > 10 mm—2 femur fragments, 2 pelvis fragments

Duplicated elements: None

Age Indicators: Completely fused humeral head with no fusion lines—25+ years (Schwartz, 1995)
Heavy dental attrition indicates that individual is probably a mid to late adult

Sex Indicators: None

Pathological Data: None

Pyre goods: > 10 mm—melted metal fused to bone, drops of melted metal on other bones
10-5 mm—melted metal and metallic residue on bones
2 mm—metallic residue on some bones

Grave Goods: None

Pyre Debris: 2 mm—charcoal

Identifiable non-human bone: None

Inventory of Finds Bags

> 10 mm:	Soil and rocks Cranial Axial: vertebrae, rib Upper limb: humerus, radius, metacarpal Lower limb: femur, pelvis Unidentified human bone Unidentified human long bone Bone with metallic residue, melted metal on bone
10-5 mm:	Axial skeleton: rib, vertebrae Unidentified human bone Unidentified human long bone Cranial, tooth Bone with melted metal, metallic residue Soil and rocks
2 mm:	Unidentified human bone Soil with traces of human bone, rocks Charcoal Bone with metallic residue
< 2 mm:	Residue and traces of human bone

Burial #: H2280.1	Date: 4/6/06	Observer: Carrie Sulosky
Estimated Sex: ----	Estimated Age: Adult	Estimated MNI: 1

Context: Urned cremation burial from greyware vessel with two lug handles

Total weight of cremated materials: 1305.29 g **Total weight of non-human bone:** 0.38 g

Total weight of cremated human bone: 665.59 g **Dimensions of largest fragment:** 53.1 x 29.9 mm

Weight fractions: >10mm: 282.93 g 10-5mm: 180.08 g 5-2mm: 64.31 g 2-1mm: 210.27 g

Colour ranges: Mostly white; grey trabecular bone; black patches on trabecular bone and some of the cortical bone of the long bones and skull

Shrinkage: No instances of abnormal shrinkage

Fissuring: No instances of abnormal fissuring

Warping: Warping visible on some long bones

Identifiable Fragments Present in Each Sieve Fraction:

Skull: > 10 mm—20 cranial fragments
 10-5 mm—51 cranial fragments

Axial Skeleton: > 10 mm—7 rib fragments, 18 vertebrae fragments
 10-5 mm—25 rib fragments, 7 vertebrae fragments

Upper Limb: > 10 mm—1 radius fragment
10-5 mm—1 hand phalanx

Lower Limb: None

Duplicated elements: None

Age Indicators: Degenerative changes on spine suggest that the individual was an adult

Sex Indicators: None

Pathological Data: > 10 mm—slight lipping (horizontal osteophytes) on vertebral bodies

Pyre goods: > 10 mm—orange ceramic, charred

Grave Goods: None

Pyre Debris: 10-5 mm—charcoal
2 mm—charcoal

Identifiable non-human bone: 10-5 mm—cremated bird bone

Inventory of Finds Bags

> 10 mm:	Cranial
	Axial: vertebrae, rib
	Upper limb: radius
	Unidentified human bone
	Unidentified human long bone
	Charred ceramic
	Soil and rock
10-5 mm:	Axial skeleton: rib, vertebrae
	Unidentified human bone
	Unidentified human long bone
	Cranial
	Bird bone
	Charcoal
	Upper limb: hand phalanx
2 mm:	Unidentified human bone
	Soil
	Charcoal
< 2 mm:	Residue and traces of human bone

Burial #: HG214 Near Holgate, Railway Bridge	Date: 3/6/06	Observer: Carrie Sulosky
Estimated Sex: ----	Estimated Age: Adult > 15-19 years	Estimated MNI: 1

Context: Urned cremation burial from glass vessel

Total weight of cremated materials: 486.8 g **Total weight of non-human bone:** 0 g

Total weight of cremated human bone: 314.18 g **Dimensions of largest fragment:** 37 x 14.7 mm

Weight fractions: >10mm: 60.6 g 10-5mm: 164.16 g 5-2mm: 66.32 g 2-1mm: 23.10 g

Colour ranges: Mostly white; dark grey patches on some trabecular bone, some bones dark grey throughout (skull, long bones)

Shrinkage: No instances of abnormal shrinkage

Fissuring: No instances of abnormal fissuring

Warping: Warping visible on 1 long bone fragment

Identifiable Fragments Present in Each Sieve Fraction:

Skull: > 10 mm—22 cranial fragments
 10-5 mm—108 cranial fragments

Axial Skeleton: > 10 mm—1 vertebra fragment

Upper Limb: 10-5 mm—1 radial head

Lower Limb: None

Duplicated elements: None

Age Indicators: Midlambdoid suture closure— > 15-19 years (Schwartz, 1995)

Sex Indicators: None

Pathological Data: None

Pyre goods: > 10 mm—Ceramic
10-5 mm—Ceramic

Grave Goods: 2 mm—glass—from urn??

Pyre Debris: None

Identifiable non-human bone: None

Inventory of Finds Bags

> 10 mm:	Cranial (with midlambdoid)
	Axial: vertebrae
	Unidentified human bone
	Unidentified human long bone
	Ceramic
	Soil
10-5 mm:	Unidentified human bone
	Unidentified human long bone
	Cranial
	Ceramic
	Rock
	Upper Limb: radial head
2 mm:	Soil and bone fragments
	Unidentified human bone
	Soil with traces of human bone
	Glass—from urn??
< 2 mm:	Residue and traces of human bone

Burial #: 1974.95—Appletree Farm, Heworth	Date: 4/6/06	Observer: Carrie Sulosky
Estimated Sex: ----	Estimated Age: Adult	Estimated MNI: 1

Context: Unurned cremation burial—large amount of charcoal may suggest pyre site (*bustum*)

Total weight of cremated materials: 484 g **Total weight of non-human bone:** 0 g

Total weight of cremated human bone: 253.59 g **Dimensions of largest fragment:** 94.6 x 34.2 mm

Weight fractions: >10mm: 224.31 g 10-5mm: 26.65 g 5-2mm: 3.69 g 2-1mm: 2.24 g

Colour ranges: Mostly white; some patches of light grey on the cortical bone of the long bones

Shrinkage: Femur and pelvis did not show the same amount of shrinkage as the rest of the bones

Fissuring: No instances of abnormal fissuring

Warping: Warping visible on some long bones

Identifiable Fragments Present in Each Sieve Fraction:

Skull: > 10 mm—8 cranial fragments
 10-5 mm—14 cranial fragments

Axial Skeleton: > 10 mm—3 rib fragments, 1 vertebra fragment
 10-5 mm—1 rib fragments, 1 vertebra fragment

Upper Limb: None

Lower Limb: > 10 mm—2 femur fragments, 2 pelvis fragments

Duplicated elements: None

Age Indicators: Large, fully formed femur without fusion lines—adult

Sex Indicators: None

Pathological Data: None

Pyre goods: None

Grave Goods: None

Pyre Debris: > 10 mm—charcoal
 10-5 mm—charcoal
 2 mm—charcoal

Identifiable non-human bone: None

Inventory of Finds Bags

> 10 mm:	Cranial
	Axial: vertebrae, rib
	Unidentified human bone
	Unidentified human long bone
	Charcoal
	Lower limb: pelvis, femur
	Charcoal, soil, traces of human bone
	Tile/rock
10-5 mm:	Axial skeleton: rib, vertebrae
	Unidentified human bone
	Unidentified human long bone
	Cranial
	Charcoal
	Charcoal, soil, traces of human bone
2 mm:	Unidentified human bone
	Charcoal, soil, traces of human bone
	Charcoal
< 2 mm:	Residue and traces of human bone

Burial #: 1980.54 Catterick Bypass, 1959	Date: 15/6/06	Observer: Carrie Sulosky
Estimated Sex: ----	Estimated Age: Adult	Estimated MNI: 1

Context: Urned cremation burial from square bottle

Total weight of cremated materials: 1337.31 g **Total weight of non-human bone:** 0 g

Total weight of cremated human bone: 1013.76 g **Dimensions of largest fragment:** 79.1 x 26.4 mm

Weight fractions: >10mm: 701.05 g 10-5mm: 172.13 g 5-2mm: 43.65 g 2-1mm: 96.93 g

Colour ranges: Mostly white; some patches of light grey on the cortical bone of the skull/long bones and tinges on some trabecular bone; some femur fragments have white cortical bone and black trabecular bone

Shrinkage: Sternal end of clavicle larger than acromial, 1 femur shaft and head bigger than the other (each from different sides of the body)—may be normal variation accentuated by heat-related changes

Fissuring: Acromial end of clavicle more fissured than sternal end

Warping: Warping visible on some long bones and the skull

Identifiable Fragments Present in Each Sieve Fraction:

Skull: > 10 mm—55 cranial fragments
 10-5 mm—29 cranial fragments

Axial Skeleton: > 10 mm—7 rib fragments, 35 vertebrae fragments, 1 sternum fragment (from inferior

corpus), 2 clavicle fragments (1 sternal, 1 acromial)
10-5 mm—10 rib fragments, 11 vertebrae fragments

Upper Limb: > 10 mm—1 head of a hand phalanx, 1 scapula fragment, 1 radius fragment, 1 ulna fragment, 5 humerus fragments (3 head pieces, 1 distal, 1 shaft)
10-5 mm—1 hand phalanx (distal)

Lower Limb: > 10 mm—5 femur fragments, 14 pelvis fragments

Duplicated elements: None

Age Indicators: Vertebrae completely fused—adult 20+ years (Schwartz, 1995)

Sex Indicators: None—however the Catterick report lists the sex of the cremation as female—I personally don't feel comfortable with that estimation as I have found no morphological features that were sex diagnostic

Pathological Data: > 10 mm—slight lipping (horizontal osteophytes) on cervical and one thoracic (T1?) vertebral bodies

Pyre goods: 2 mm—glass

Grave Goods: None

Pyre Debris: None

Identifiable non-human bone: None

Inventory of Finds Bags

> 10 mm:	Cranial Axial: vertebrae, rib, sternum, clavicle Upper limb: humerus, ulna, radius, scapula Lower limb: femur, pelvis Unidentified human bone Unidentified human long bone Soil
10-5 mm:	Axial skeleton: rib, vertebrae Unidentified human bone Unidentified human long bone Cranial Soil Upper Limb: hand phalanx
2 mm:	Unidentified human bone Soil Glass
< 2 mm:	Residue and traces of human bone

Burial #: Trentholme Drive 1974.303 Year 2/52	Date: 6/6/06	Observer: Carrie Sulosky
Estimated Sex: ----	Estimated Age: -----	Estimated MNI: 1

Context: Unknown

Total weight of cremated materials: 183.7 g **Total weight of non-human bone:** 0.5 g

Total weight of cremated human bone: 176.91 g **Dimensions of largest fragment:** 53.8 x 41.5 mm

Weight fractions: >10mm: 121.06 g 10-5mm: 46.23 g 5-2mm: 5.07 g 2-1mm: 4.55 g

Colour ranges: Some white; some white cortical bone with dark grey trabecular bone; many pieces of bone are dark grey throughout (pelvis, rib)

Shrinkage: One rib completely dark grey—seems to exhibit no (or very little) shrinkage

Fissuring: No instances of abnormal fissuring

Warping: Warping visible on some long bones

Identifiable Fragments Present in Each Sieve Fraction:

Skull: > 10 mm—4 cranial fragments
 10-5 mm—5 cranial fragments

Axial Skeleton: > 10 mm—2 rib fragments, 3 vertebrae fragments
 10-5 mm—5 rib fragments, 2 vertebrae fragments

Upper Limb: None

Lower Limb: > 10 mm—6 pelvis fragments

Duplicated elements: None

Age Indicators: None

Sex Indicators: None

Pathological Data: None

Pyre goods: None

Grave Goods: 10-5 mm—grey ceramic

Pyre Debris: None

Identifiable non-human bone: 10-5 mm—cremated bird bone

Inventory of Finds Bags

> 10 mm:	Cranial
	Axial: vertebrae, rib
	Lower limb: pelvis
	Unidentified human bone
	Unidentified human long bone
10-5 mm:	Axial skeleton: rib, vertebrae
	Unidentified human bone
	Unidentified human long bone
	Cranial
	Bird bone
	Charcoal
	Grey ceramic
2 mm:	Unidentified human bone
	Soil and rock
< 2 mm:	Residue and traces of human bone

Burial #: Trentholme Drive 1971.303 4	Date: 6/6/06	Observer: Carrie Sulosky
Estimated Sex: ----	Estimated Age: -----	Estimated MNI: 1

Context: Urned cremation burial from greyware vessel

Total weight of cremated materials: 325.56 g **Total weight of non-human bone:** 0 g

Total weight of cremated human bone: 304.64 g **Dimensions of largest fragment:** 65 x 37.1 mm

Weight fractions: >10mm: 230.24 g 10-5mm: 67.2 g 5-2mm: 3.54 g 2-1mm: 3.66 g

Colour ranges: Some are all white; some long bones have white cortical bone with dark grey trabecular bone; many, especially the skull, are light grey the whole way through

Shrinkage: No instances of abnormal shrinkage

Fissuring: No instances of abnormal fissuring

Warping: Warping visible on some long bones

Identifiable Fragments Present in Each Sieve Fraction:

Skull: > 10 mm—22 cranial fragments
 10-5 mm—19 cranial fragments

Axial Skeleton: > 10 mm—4 rib fragments
 10-5 mm—14 rib fragments

Upper Limb: > 10 mm—3 humerus fragments, 1 radius fragment

Lower Limb: > 10 mm—1 patella

Duplicated elements: None

Age Indicators: None

Sex Indicators: None

Pathological Data: None

Pyre goods: None

Grave Goods: > 10 mm— grey ceramic (from urn?)
10-5 mm—grey ceramic (from urn?)

Pyre Debris: None

Identifiable non-human bone: None

Inventory of Finds Bags

> 10 mm:	Cranial
	Axial: rib
	Upper limb: humerus, radius
	Lower limb: patella
	Unidentified human bone
	Unidentified human long bone
	Ceramic
10-5 mm:	Axial skeleton: rib
	Unidentified human bone
	Unidentified human long bone
	Cranial
	Ceramic
	Soil and traces of human bone
2 mm:	Unidentified human bone
	Soil and bone
< 2 mm:	Residue and traces of human bone

Burial #: Trentholme Drive 1971.303 19a	Date: 8/6/06	Observer: Carrie Sulosky
Estimated Sex: ----	Estimated Age: ----	Estimated MNI: 1

Context: Urned cremation burial

Total weight of cremated materials: 551.03 g **Total weight of non-human bone:** 0 g

Total weight of cremated human bone: 107 g **Dimensions of largest fragment:** 28.6 x 22.6 mm

Weight fractions: >10mm: 107 g 10-5mm: 78.45 g 5-2mm: 51.34 g 2-1mm: 82.66 g

Colour ranges: Mostly white; some patches of dark and light grey trabecular bone

Shrinkage: No instances of abnormal shrinkage

Fissuring: No instances of abnormal fissuring

Warping: Warping visible on some long bones

Identifiable Fragments Present in Each Sieve Fraction:

Skull: > 10 mm—2 tooth roots

10-5 mm—10 cranial fragments

Axial Skeleton: > 10 mm—1 vertebra fragment

10-5 mm—3 vertebrae fragments

Upper Limb: None

Lower Limb: None

Duplicated elements: None

Age Indicators: None

Sex Indicators: None

Pathological Data: > 10 mm—periostitis on long bone (not tibia!)
10-5 mm—periostitis on long bone (not tibia!)

Pyre goods: None

Grave Goods: > 10 mm— grey and orange ceramic
2 mm—grey ceramic

Pyre Debris: 2 mm—charcoal

Identifiable non-human bone: None

Inventory of Finds Bags

> 10 mm:	Cranial
	Unknown long bone with periostitis
	Axial: vertebrae
	Soil and rock
	Unidentified human bone
	Unidentified human long bone
10-5 mm:	Grey ceramic
	Rocks and soil
	Tooth roots
	Long bones with periostitis
	Axial: vertebrae
	Unidentified human bone
2 mm:	Unidentified human long bone
	Ceramic
	Charcoal
	Soil and rock
< 2 mm:	Residue and traces of human bone

Trentholme Drive---1971.303 69

NOT CREMATED

4 teeth:

- 1 M₂, unerupted
- 1 premolar unerupted
- 1 M¹, slight wear, full roots
- 1 M₁, slight wear, full roots

INDIVIDUAL AGED 7-9 YEARS

Trentholme Drive---1971.303 77—urned cremation

*contents of lower urn

- charcoal
- cremated human bone—0.27 g
- soil and rock

*contents of upper urn

- charcoal
 - cremated human bone—0.62 g
 - soil and rock
-

Trentholme Drive---1971.303 85b—urned cremation

*top of urn

- soil and rock
- unidentified cremated human bone—1.75 g
- charcoal
- painted wall plaster? probably intrusive
- fossil

Burial #: Trentholme Drive 1971.303 87	Date: 5/6/06	Observer: Carrie Sulosky
Estimated Sex: ----	Estimated Age: Adult 20+ years	Estimated MNI: 1

Context: Unknown

Total weight of cremated materials: 509.25 g **Total weight of non-human bone:** 0 g

Total weight of cremated human bone: 346.4 g **Dimensions of largest fragment:** 57.4 x 30.7 mm

Weight fractions: >10mm: 246.02 g 10-5mm: 59.54 g 5-2mm: 19.44 g 2-1mm: 21.4 g

Colour ranges: The cortical bone on the skull ranges from black to light grey to white; the cortical bone of the femur and other long bones is both white and dark grey; the trabecular bone is dark grey

Shrinkage: No instances of abnormal shrinkage

Fissuring: No instances of abnormal fissuring

Warping: No abnormal warping visible

Identifiable Fragments Present in Each Sieve Fraction:

Skull: > 10 mm—20 cranial fragments
 10-5 mm—13 cranial fragments

Axial Skeleton: > 10 mm—1 rib fragment, 4 vertebrae fragments
 10-5 mm—7 rib fragments

Upper Limb: > 10 mm—2 humerus fragments

Lower Limb: > 10 mm—5 femur fragments, 2 pelvis fragments, 1 talus fragment, 2 tibia fragments

Duplicated elements: None

Age Indicators: Vertebrae completely fused—adult 20+ years (Schwartz, 1995)

Sex Indicators: None

Pathological Data: None

Pyre goods: > 10 mm—Roman gaming piece made out of animal bone (cortical)
10-5 mm—Roman gaming piece made out of animal bone (cortical), charred ceramic
2 mm—charred ceramic, small lead ball

Grave Goods: None

Pyre Debris: 2 mm—charcoal

Identifiable non-human bone: None

Inventory of Finds Bags

> 10 mm:	Cranial
	Axial: vertebrae, rib
	Upper limb: humerus
	Lower limb: femur, pelvis, tibia, talus
	Unidentified human bone
	Unidentified human long bone
	Animal bone gaming pieces
10-5 mm:	Axial skeleton: rib
	Unidentified human bone
	Unidentified human long bone
	Cranial
	Soil and traces of human bone
	Roman game pieces
	Ceramic
2 mm:	Unidentified human bone
	Soil, rock
	Charcoal
	Lead ball
	Charred ceramic
< 2 mm:	Residue and traces of human bone

Burial #: Trentholme Drive 1971.303 88	Date: 7/6/06	Observer: Carrie Sulosky
Estimated Sex: ----	Estimated Age: -----	Estimated MNI: 1

Context: Urned cremation burial from greyware vessel

Total weight of cremated materials: 192.2 g **Total weight of non-human bone:** 18.74 g

Total weight of cremated human bone: 8.40 g **Dimensions of largest fragment:** 22.4 x 15.7 mm

Weight fractions: >10mm: 0.92 g 10-5mm: 1.25 g 5-2mm: 0.4 g 2-1mm: 5.8 g

Colour ranges: Mostly white; some patches of light grey on the cortical bone

Shrinkage: No instances of abnormal shrinkage

Fissuring: No instances of abnormal fissuring

Warping: No instances of abnormal warping

Identifiable Fragments Present in Each Sieve Fraction:

Skull: > 10 mm—1 cranial fragment

Axial Skeleton: None

Upper Limb: None

Lower Limb: None

Duplicated elements: None

Age Indicators: None

Sex Indicators: None

Pathological Data: None

Pyre goods: None

Grave Goods: > 10 mm—grey ceramic (from urn?)

Pyre Debris: > 10 mm—charcoal
10-5 mm—charcoal
2 mm—charcoal
< 2 mm—charcoal

Identifiable non-human bone:	> 10 mm—unburnt chicken bones (wings and legs but not the ‘meatiest’ parts)
	10-5 mm—unburnt chicken bones (wings and legs but not the ‘meatiest’ parts)
	2 mm—unburnt chicken bones (wings and legs but not the ‘meatiest’ parts)
	< 2 mm—unburnt chicken bones (wings and legs but not the ‘meatiest’ parts)

Inventory of Finds Bags

> 10 mm:	Cranial
	Grey ceramic
	Charcoal
	Rock and soil
	Chicken bones
10-5 mm:	Chicken bones
	Unidentified human bone
	Soil and rock
	Charcoal
2 mm:	Unidentified human bone
	Charcoal
	Chicken bones
	Rock and soil
< 2 mm:	Residue and traces of human bone, chicken bone, and charcoal

Burial #: Trentholme Drive 1971.303 89b	Date: 6/6/06	Observer: Carrie Sulosky
Estimated Sex: ----	Estimated Age: ----	Estimated MNI: 1

Context: Unknown

Total weight of cremated materials: 84.68 g **Total weight of non-human bone:** 0 g

Total weight of cremated human bone: 20.75 g **Dimensions of largest fragment:** 28.4 x 16.8 mm

Weight fractions: >10mm: 3.51 g 10-5mm: 4.83 g 5-2mm: 4.29 g 2-1mm: 8.12 g

Colour ranges: Most of the cortical bone is white, and most of the trabecular bone is light grey

Shrinkage: No instances of abnormal shrinkage

Fissuring: No instances of abnormal fissuring

Warping: No abnormal warping visible

Identifiable Fragments Present in Each Sieve Fraction:

Skull: 10-5 mm—tooth roots
 2 mm—tooth roots

Axial Skeleton: None

Upper Limb: None

Lower Limb: None

Duplicated elements: None

Age Indicators: None

Sex Indicators: None

Pathological Data: None

Pyre goods: None

Grave Goods: None

Pyre Debris: 2 mm—charcoal/slag

Identifiable non-human bone: None

Inventory of Finds Bags

> 10 mm:	Soil, rock and traces of human bone Unidentified human bone
10-5 mm:	Tooth root Unidentified human bone Soil with traces of human bone
2 mm:	Unidentified human bone Soil with traces of human bone Charcoal, slag Tooth roots
< 2 mm:	Residue and traces of human bone

Burial #: Trentholme Drive 1971.303 98	Date: 7/6/06	Observer: Carrie Sulosky
Estimated Sex: ----	Estimated Age: -----	Estimated MNI: 1

Context: Unknown

Total weight of cremated materials: 20.2 g **Total weight of non-human bone:** 0.33 g

Total weight of cremated human bone: 19.82 g **Dimensions of largest fragment:** 38.1 x 15 mm

Weight fractions: >10mm: 13.68 g 10-5mm: 5.14 g 5-2mm: 0.54 g 2-1mm: 0.46 g

Colour ranges: The cortical bone is mostly white, with some light grey patches (especially on the long bones), whereas the trabecular bone is mostly dark grey

Shrinkage: No instances of abnormal shrinkage

Fissuring: No instances of abnormal fissuring

Warping: Some warping visible on the long bones

Identifiable Fragments Present in Each Sieve Fraction:

Skull: > 10 mm—2 cranial fragments
 10-5 mm—3 cranial fragments

Axial Skeleton: None

Upper Limb: None

Lower Limb: None

Duplicated elements: None

Age Indicators: None

Sex Indicators: None

Pathological Data: None

Pyre goods: None

Grave Goods: 10-5 mm—unburnt grey ceramic

Pyre Debris: None

Identifiable non-human bone: 10-5 mm—cremated bird bone

Inventory of Finds Bags

> 10 mm:	Cranial
	Unidentified human bone
	Unidentified human long bone
10-5 mm:	Bird bone
	Unidentified human bone
	Unidentified human long bone
	Cranial
	Ceramic
2 mm:	Unidentified human bone
< 2 mm:	Residue and traces of human bone

Burial #: Trentholme Drive 1971.303 119	Date: 9/6/06	Observer: Carrie Sulosky
Estimated Sex: ----	Estimated Age: Adult	Estimated MNI: 1

Context: Urned cremation burial

Total weight of cremated materials: 512.04 g **Total weight of non-human bone:** 0 g

Total weight of cremated human bone: 495.75 g **Dimensions of largest fragment:** 53.6 x 10.6 mm

Weight fractions: >10mm: 298.84 g 10-5mm: 152.28 g 5-2mm: 31.43 g 2-1mm: 13.20 g

Colour ranges: Mostly white cortical bone with black trabecular bone; some bones were grey throughout;
some bones were white throughout

Shrinkage: No instances of abnormal shrinkage

Fissuring: No instances of abnormal fissuring

Warping: Warping visible on the long bones and skull

Identifiable Fragments Present in Each Sieve Fraction:

Skull: > 10 mm—38 cranial fragments
 10-5mm—75 cranial fragments

Axial Skeleton: > 10 mm—3 rib fragments, 12 vertebrae fragments
 10-5 mm—19 rib fragments, 10 vertebrae fragments

Upper Limb: None

Lower Limb: > 10 mm—8 pelvis fragments

Duplicated elements: None

Age Indicators: Fully fused vertebrae—adult 20+ years (Schwartz, 1995)

Sex Indicators: None

Pathological Data: > 10 mm—slight lipping (horizontal osteophytes) of the vertebral bodies

Pyre goods: None

Grave Goods: None

Pyre Debris: 2 mm—slag

Identifiable non-human bone: None

Inventory of Finds Bags

> 10 mm:	Cranial
	Axial: rib, vertebrae
	Unidentified human bone
	Unidentified human long bone
	Lower limb: pelvis
10-5 mm:	Unidentified human bone
	Unidentified human bone
	Cranial
	Rock
	Axial: vertebrae, rib
2 mm:	Slag
	Fossil
	Unidentified human bone
	Rock and soil
< 2 mm:	Residue and traces of human bone

Burial #: Trentholme Drive 1971.303 124b	Date: 10/6/06	Observer: Carrie Sulosky
Estimated Sex: ----	Estimated Age: Adult 20+ years	Estimated MNI: 1

Context: Unknown

Total weight of cremated materials: 687.1 g **Total weight of non-human bone:** 1.13 g

Total weight of cremated human bone: 513.03 g **Dimensions of largest fragment:** 73.2 x 44.4 mm

Weight fractions: >10mm: 334.54 g 10-5mm: 104.95 g 5-2mm: 17.44 g 2-1mm: 56.10 g

Colour ranges: Some bone completely white (skull, long bones); most all grey with white patches; some with white cortical and dark grey/black trabecular

Shrinkage: No instances of abnormal shrinkage

Fissuring: No instances of abnormal fissuring

Warping: Warping visible on long bones

Identifiable Fragments Present in Each Sieve Fraction:

Skull: > 10 mm—8 cranial fragments
 10-5 mm—24 cranial fragments
 2 mm—tooth root

Axial Skeleton: > 10 mm—7 rib fragments, 8 vertebrae fragments
 10-5 mm—8 rib fragments, 2 vertebrae fragments

Upper Limb: None

Lower Limb: > 10 mm—3 tibia fragments, 6 pelvis fragments

Duplicated elements: None

Age Indicators: Vertebrae completely fused—adults 20+ years (Schwartz, 1995)

Sex Indicators: None

Pathological Data: None

Pyre goods: None

Grave Goods: None

Pyre Debris: None

Identifiable non-human bone: 10-5 mm—cremated bird bones (light grey in colour)

Inventory of Finds Bags

> 10 mm:	Cranial
	Unidentified human bones
	Unidentified human long bones
	Lower limb: pelvis, tibia
	Soil and traces of human bone
	Axial: rib, vertebrae
10-5 mm:	Bird bones
	Unidentified human bone
	Soil and traces of human bone
	Axial: rib, vertebrae
	Cranial
	Unidentified human long bone
2 mm:	Unidentified human bone
	Tooth root
	Rock and soil with traces of human bone
< 2 mm:	Residue and traces of human bone

Burial #: Trentholme Drive 1971.303 202	Date: 6/6/06	Observer: Carrie Sulosky
Estimated Sex: ----	Estimated Age: Subadult < 8 years	Estimated MNI: 1

Context: Unknown

Total weight of cremated materials: 39.11 g **Total weight of non-human bone:** 0 g

Total weight of cremated human bone: 27.91 g **Dimensions of largest fragment:** 38.4 x 26.6 mm

Weight fractions: >10mm: 19 g 10-5mm: 8.01 g 5-2mm: 0.84 g 2-1mm: 0.58 g

Colour ranges: Mostly white cortical bone, some patches of light grey (on skull); most trabecular bone
black/dark grey

Shrinkage: No instances of abnormal shrinkage

Fissuring: No instances of abnormal fissuring

Warping: No visible warping

Identifiable Fragments Present in Each Sieve Fraction:

Skull: > 10 mm—6 cranial fragments
 10-5 mm—unerupted M¹ with Carabelli cusp, 4 cranial fragments

Axial Skeleton: 10-5 mm—1 vertebra fragment

Upper Limb: None

Lower Limb: None

Duplicated elements: None

Age Indicators: Unerupted M¹—subadult < 8 years (Schwartz, 1995)

Sex Indicators: None

Pathological Data: None

Pyre goods: None

Grave Goods: None

Pyre Debris: None

Identifiable non-human bone: None

Inventory of Finds Bags

> 10 mm:	Cranial
	Rock
	Unidentified human long bones
10-5 mm:	Rock
	Unidentified human bone
	Unerrupted M ¹ with Carabelli cusp
	Axial: vertebrae
	Cranial
2 mm:	Unidentified human long bone
< 2 mm:	Residue and traces of human bone

Burial #: Trentholme Drive 1971.303 203	Date: 5/6/06	Observer: Carrie Sulosky
Estimated Sex: ----	Estimated Age: Adult 20+ years	Estimated MNI: 1

Context: Urned cremation burial in greyware vessel

Total weight of cremated materials: 663.02 g **Total weight of non-human bone:** 0 g

Total weight of cremated human bone: 529.73 g **Dimensions of largest fragment:** 61.9 x 31.5 mm

Weight fractions: >10mm: 334.93 g 10-5mm: 93.63 g 5-2mm: 33.92 g 2-1mm: 67.25 g

Colour ranges: Most of cortical bone white with patches of light grey; light grey trabecular bone

Shrinkage: No instances of abnormal shrinkage

Fissuring: No instances of abnormal fissuring

Warping: Warping visible on long bones and some skull fragments

Identifiable Fragments Present in Each Sieve Fraction:

Skull: > 10 mm—17 cranial fragments
 10-5 mm—19 cranial fragments

Axial Skeleton: > 10 mm—2 rib fragments, 19 vertebrae fragments
 10-5 mm—4 rib fragments, 14 vertebrae fragments

Upper Limb: > 10 mm—2 humerus fragments

Lower Limb: > 10 mm—1 talus fragment, 8 pelvis fragments
10-5 mm—1 pelvis fragment

Duplicated elements: None

Age Indicators: Vertebrae completely fused—adults 20+ years (Schwartz, 1995)

Sex Indicators: None

Pathological Data: None

Pyre goods: None

Grave Goods: > 10 mm—grey ceramic
10-5 mm—grey ceramic

Pyre Debris: 2 mm—charcoal

Identifiable non-human bone: None

Inventory of Finds Bags

> 10 mm:	Cranial
	Unidentified human bones
	Unidentified human long bones
	Ceramic
	Axial: rib, vertebrae
	Upper limb: humerus
	Lower limb: talus, pelvis
10-5 mm:	Ceramic
	Lower limb: pelvis
	Unidentified human bone
	Soil and traces of human bone
	Axial: rib, vertebrae
	Cranial
2 mm:	Unidentified human long bone
	Unidentified human bone
	Charcoal
Soil with traces of human bone	
< 2 mm:	Residue and traces of human bone

Burial #: Trentholme Drive 1971.303 205	Date: 7/6/06	Observer: Carrie Sulosky
Estimated Sex: ----	Estimated Age: Older adult	Estimated MNI: 1

Context: Unknown

Total weight of cremated materials: 307.61 g **Total weight of non-human bone:** 10.96 g

Total weight of cremated human bone: 274.82 g **Dimensions of largest fragment:** 56.3 x 30.5 mm

Weight fractions: >10mm: 184.75 g 10-5mm: 77.07 g 5-2mm: 1.48 g 2-1mm: 11.52 g

Colour ranges: Most of the cortical bone is light grey, while some is black and some is white; trabecular bone is dark grey

Shrinkage: No instances of abnormal shrinkage

Fissuring: No instances of abnormal fissuring

Warping: Warping visible on long bones

Identifiable Fragments Present in Each Sieve Fraction:

Skull: > 10 mm—33 cranial fragments
 10-5 mm—43 cranial fragments

Axial Skeleton: > 10 mm—1 vertebra fragment
 10-5 mm—9 rib fragments, 4 vertebrae fragments

Upper Limb: > 10 mm—1 humerus fragment, 1 metacarpal head, 1 hand phalanx

Lower Limb: > 10 mm—1 tibia fragment, 4 pelvis fragments, 3 femur fragments

Duplicated elements: None

Age Indicators: Auricular surface—older adult (Lovejoy *et al.*, 1985)

Sex Indicators: None

Pathological Data: None

Pyre goods: None

Grave Goods: 10-5 mm—ceramic, 2 sides, grey with reddish inside

Pyre Debris: 2 mm—charcoal

Identifiable non-human bone: > 10 mm—proximal cremated cow phalanx

Inventory of Finds Bags

> 10 mm:	Cranial
	Unidentified human bones
	Unidentified human long bones
	Auricular surface—older adult
	Lower limb: pelvis, tibia, femur
	Upper limb: metacarpal, phalanx, humerus
	Proximal cow phalanx
	Axial: vertebrae
10-5 mm:	Ceramic
	Unidentified human bone
	Axial: rib, vertebrae
	Cranial
	Unidentified human long bone
2 mm:	Unidentified human bone
	Charcoal
	Rock and soil
< 2 mm:	Residue and traces of human bone

Burial #: Trentholme Drive 1971.303 260	Date: 13/6/06	Observer: Carrie Sulosky
Estimated Sex: ----	Estimated Age: Mid? Adult	Estimated MNI: 1

Context: Unknown

Total weight of cremated materials: 1343.62 g **Total weight of non-human bone:** 1.14 g

Total weight of cremated human bone: 1289.45 g **Dimensions of largest fragment:** 92.4 x 53 mm

Weight fractions: >10mm: 920.22 g 10-5mm: 254.31 g 5-2mm: 46.16 g 2-1mm: 68.76 g

Colour ranges: The cortical bone of the tibia, radius and skull is white with black patches, the cortical bone of the pelvis and vertebrae is white with light grey tinged trabecular bone, and the long bones have white cortical bone and black trabecular bone

Shrinkage: No instances of abnormal shrinkage

Fissuring: No instances of abnormal fissuring

Warping: Warping visible on long bones and skull

Identifiable Fragments Present in Each Sieve Fraction:

Skull: > 10 mm—64 cranial fragments
 10-5 mm—60 cranial fragments
 2 mm—1 tooth root

Axial Skeleton: > 10 mm—2 sternal clavicle ends, 1 superior portion of manubrium, 13 rib fragments, 2 sacrum fragments, 40 vertebrae fragments (including dens)
10-5 mm—39 rib fragments, 26 vertebrae fragments

Upper Limb: > 10 mm—2 scapula fragments, 4 humerus fragments, 2 radius fragments, 1 hand phalanx, 1 ulna fragment

Lower Limb: > 10 mm—1 patellae (right and left), 9 femur fragments

Duplicated elements: None

Age Indicators: Everything fused—adult, pathology indicates individual may be mid adult (Schwartz, 1995)

Sex Indicators: None

Pathological Data: > 10 mm—slight lipping (horizontal osteophytes) of vertebral bodies

Pyre goods: > 10 mm—bones with iron residue: 1 unidentified, 1 fibula, 1 metatarsal head, 9 tibia, 16 pelvis
10-5 mm—molten metal—iron?, bright orange charred and unglazed ceramic
2 mm—bright orange, unglazed and charred ceramic

Grave Goods: None

Pyre Debris: 10-5 mm—charcoal
2 mm—charcoal

Identifiable non-human bone: > 10 mm—cremated mammal and bird bones

Inventory of Finds Bags

> 10 mm:	Cranial
	Unidentified human bones
	Unidentified human long bones
	Upper limb: humerus, scapula, radius, hand phalanx, ulna
	Lower limb: pelvis, tibia, metatarsal, patella, femur, fibula
	Mammal bone
	Bird bone
	Unidentified bone with iron residue
	Axial: rib, vertebrae, sacrum, manubrium, clavicle
10-5 mm:	Rock and soil
	Unidentified human bone
	Cranial
	Unidentified human long bone
	Charcoal
	Ceramic
	Axial: vertebrae and rib
	Molten metal (iron?)
	Bone with metal residue (iron)
2 mm:	Unidentified human bone
	Tooth root
	Rock and soil
	Charcoal
	Bright orange ceramic
< 2 mm:	Residue and traces of human bone

Burial #: Trentholme Drive 1971.303 262	Date: 10/6/06	Observer: Carrie Sulosky
Estimated Sex: ----	Estimated Age: Mid? Adult	Estimated MNI: 1

Context: Urned cremation burial

Total weight of cremated materials: 796.81 g **Total weight of non-human bone:** 0 g

Total weight of cremated human bone: 721.72 g **Dimensions of largest fragment:** 37.3 x 35.6 mm

Weight fractions: >10mm: 400.08 g 10-5mm: 263.12 g 5-2mm: 40.51 g 2-1mm: 18.01 g

Colour ranges: All mostly white; some skull, rib and vertebrae are light grey the whole way through with white patches

Shrinkage: No instances of abnormal shrinkage

Fissuring: No instances of abnormal fissuring

Warping: Warping visible on long bones and skull

Identifiable Fragments Present in Each Sieve Fraction:

Skull: > 10 mm—40 cranial fragments, 6 mandible fragments, 1 midlambdoid suture
 10-5 mm—68 cranial fragments, 1 tooth root

Axial Skeleton: > 10 mm—6 rib fragments, 9 vertebrae fragments
 10-5 mm—21 rib fragments, 15 vertebrae fragments

Upper Limb: > 10 mm—6 humerus fragments, 1 radius fragment
10-5 mm—3 hand phalanges

Lower Limb: > 10 mm—1 tibia fragment, 4 pelvis fragments, 2 femur fragments, 1 metatarsal (distal epiphysis)
10-5 mm—1 distal head of a metatarsal

Duplicated elements: None

Age Indicators: Midlambdoid suture fused—15-19 years (Schwartz, 1995)
Tarsal distal epiphysis fused—18-22 years (Schwartz, 1995)
Pathology indicates that individual may be a mid-adult

Sex Indicators: None

Pathological Data: > 10 mm—slight lipping (horizontal osteophytes) on vertebral bodies, antemortem
tooth loss—on mandible, completely resorbed

Pyre goods: > 10 mm—2 small nails (cremated) (Find 264)

Grave Goods: None

Pyre Debris: 2 mm—charcoal

Identifiable non-human bone: None

Inventory of Finds Bags

> 10 mm:	Mandible (with antemortem tooth loss), cranium, midlambdoid suture Axial: vertebrae, rib Lower limb: pelvis, femur, tibia, metatarsal Upper limb: humerus, radius Unidentified human bone Unidentified long bone Rock
10-5 mm:	Unidentified human bone Unidentified human long bone Lower limb: Distal metatarsal Tooth root Rocks and soil Cranial Upper limb: Hand phalanx Axial: ribs, vertebrae
2 mm:	Unidentified human bone Charcoal Rock and soil
< 2 mm:	Residue and traces of human bone

Burial #: Trentholme Drive 1971.303 273b	Date: 5/6/06	Observer: Carrie Sulosky
Estimated Sex: ----	Estimated Age: Adult	Estimated MNI: 1

Context: Unknown

Total weight of cremated materials: 108.56 g **Total weight of non-human bone:** 0 g

Total weight of cremated human bone: 107.73 g **Dimensions of largest fragment:** 59.1 x 16.3 mm

Weight fractions: >10mm: 100.31 g 10-5mm: 6.84 g 5-2mm: 0.14 g 2-1mm: 0.44 g

Colour ranges: Mostly white, some patches of dark grey trabecular bone, cortical bone of the skull
charred black in one place

Shrinkage: No instances of abnormal shrinkage

Fissuring: No instances of abnormal fissuring

Warping: Warping visible on long bones

Identifiable Fragments Present in Each Sieve Fraction:

Skull: > 10 mm—4 cranial fragments

Axial Skeleton: > 10 mm—1 vertebra fragment

Upper Limb: None

Lower Limb: > 10 mm—2 tibia fragments, 1 pelvis fragment

Duplicated elements: None

Age Indicators: Pathology suggests that this is an adult

Sex Indicators: None

Pathological Data: > 10 mm—slight lipping (horizontal osteophytes) of vertebral bodies—superior and inferior bodies

Pyre goods: None

Grave Goods: None

Pyre Debris: None

Identifiable non-human bone: None

Inventory of Finds Bags

> 10 mm:	Cranial Unidentified human long bones Lower limb: pelvis, tibia Axial: vertebrae
10-5 mm:	Unidentified human bone
2 mm:	Unidentified human bone
< 2 mm:	Residue and traces of human bone

Burial #: Trentholme Drive 1971.303 280	Date: 8/6/06	Observer: Carrie Sulosky
Estimated Sex: ----	Estimated Age: Adult 20+ years	Estimated MNI: 1

Context: Unknown

Total weight of cremated materials: 398.48 g **Total weight of non-human bone:** 0 g

Total weight of cremated human bone: 378.68 g **Dimensions of largest fragment:** 64.4 x 21.1 mm

Weight fractions: >10mm: 252.85 g 10-5mm: 108.66 g 5-2mm: 13.81 g 2-1mm: 3.36 g

Colour ranges: The bones are mostly white, some patches of light grey on the cortical bone, and some instances in which the entire bone is light grey throughout (skull); some cortical bone white with dark/light grey trabecular bone (pelvis, some long bones)

Shrinkage: No instances of abnormal shrinkage

Fissuring: No instances of abnormal fissuring

Warping: Warping visible on long bones

Identifiable Fragments Present in Each Sieve Fraction:

Skull: > 10 mm—35 cranial fragments
 10-5 mm—43 cranial fragments, 3 tooth roots
 2 mm—tooth root

Axial Skeleton: > 10 mm—7 rib fragments, 9 vertebrae fragments
10-5 mm—20 rib fragments, 8 vertebrae fragments, 1 sacrum

Upper Limb: > 10 mm—2 humerus fragments

Lower Limb: > 10 mm—1 femur head, 1 proximal epiphysis of a tibia, 1 pelvis fragment, 1 fibula fragment

Duplicated elements: None

Age Indicators: Vertebrae completely fused—adults 20+ years (Schwartz, 1995)

Sex Indicators: None

Pathological Data: None

Pyre goods: > 10 mm—burnt striated ceramic (grey outside, orange inside)
10-5 mm—4 striated ceramic
2 mm—striated ceramic

Grave Goods: None

Pyre Debris: 10-5 mm—charcoal

Identifiable non-human bone: None

Inventory of Finds Bags

> 10 mm:	Cranial
	Unidentified human bones
	Unidentified human long bones
	Lower limb: pelvis, proximal epiphysis of tibia, head of femur, fibula
	Upper limb: humerus
	Striated ceramic
	Axial: rib, vertebrae
10-5 mm:	Charcoal
	Unidentified human bone
	Striated ceramic
	Axial: rib, vertebrae
	Sacrum
	Tooth roots
	Cranial
2 mm:	Unidentified human long bone
	Tooth root
	Rock and soil
	Striated ceramic
< 2 mm:	Residue and traces of human bone

Burial #: Trentholme Drive 1971.303 293	Date: 12/6/06	Observer: Carrie Sulosky
Estimated Sex: ----	Estimated Age: Subadult <16-17 years	Estimated MNI: 1

Context: Unknown

Total weight of cremated materials: 910.77 g **Total weight of non-human bone:** 0.26 g

Total weight of cremated human bone: 793.65 g **Dimensions of largest fragment:** 49.2 x 26.0 mm

Weight fractions: >10mm: 397.1 g 10-5mm: 300.87 g 5-2mm: 70.92 g 2-1mm: 24.76 g

Colour ranges: Some bones were white throughout, most were light grey throughout; some black patches on the cortical bone of the skull and long bones; some long bones had white cortical bone and black trabecular bone

Shrinkage: No instances of abnormal shrinkage

Fissuring: No instances of abnormal fissuring

Warping: Warping visible on long bones

Identifiable Fragments Present in Each Sieve Fraction:

Skull: > 10 mm—63 cranial fragments
 10-5 mm—130 cranial fragments, 3 tooth roots
 2 mm—tooth root

Axial Skeleton: > 10 mm—5 rib fragments, 4 vertebrae fragments
10-5 mm—46 rib fragments, 10 vertebrae fragments

Upper Limb: > 10 mm—1 humerus fragment

Lower Limb: > 10 mm—2 femur fragments, 1 talus fragment, 6 pelvis fragments (with unfused epiphyses)
10-5 mm—1 femur fragment

Duplicated elements: None

Age Indicators: Unfused iliac crest—< 16-17 years (Schwartz, 1995)
Unfused pubic symphyses—< 16-17 years (Schwartz, 1995)

Sex Indicators: None

Pathological Data: None

Pyre goods: > 10 mm—1 ceramic, grey outside, orange inside (charred)

Grave Goods: None

Pyre Debris: > 10 mm—charcoal
10-5 mm—charcoal
2 mm—slag, charcoal

Identifiable non-human bone: 2 mm—unburnt shrew bones (intrusive)

Inventory of Finds Bags

> 10 mm:	Cranial Unidentified human bones Unidentified human long bones Lower limb: pelvis with unfused epiphyses, femur, talus Charcoal Upper limb: humerus Rocks Ceramic Axial: rib, vertebrae
10-5 mm:	Rock and soil Unidentified human bone Lower limb: femur Axial: rib, vertebrae Cranial, tooth roots Charcoal Unidentified human long bone
2 mm:	Unidentified human bone Tooth root Rock and soil Ground snail (intrusive) Unburnt shrew bones (intrusive) Slag, charcoal
< 2 mm:	Residue and traces of human bone

Burial #: Trentholme Drive 1971.303 332	Date: 6/6/06	Observer: Carrie Sulosky
Estimated Sex: ----	Estimated Age: Adult 20+ years	Estimated MNI: 1

Context: Unknown

Total weight of cremated materials: 141.73 g **Total weight of non-human bone:** 0 g

Total weight of cremated human bone: 133.28 g **Dimensions of largest fragment:** 38.6 x 20.1 mm

Weight fractions: >10mm: 87.72 g 10-5mm: 40.02 g 5-2mm: 3.32 g 2-1mm: 2.22 g

Colour ranges: Some long bones have white cortical bone and dark grey trabecular bone; some bones were light grey throughout, some bones were white throughout

Shrinkage: No instances of abnormal shrinkage

Fissuring: No instances of abnormal fissuring

Warping: Warping visible on long bones

Identifiable Fragments Present in Each Sieve Fraction:

Skull: > 10 mm—8 cranial fragments (including mandible with tooth root inside)
 10-5 mm—18 cranial fragments

Axial Skeleton: > 10 mm—6 rib fragments, 3 vertebrae fragments
 10-5 mm—8 rib fragments, 5 vertebrae fragments

Upper Limb: > 10 mm—1 humerus fragment

Lower Limb: > 10 mm—2 femur fragments, 4 pelvis fragments

Duplicated elements: None

Age Indicators: Vertebrae completely fused—adults 20+ years (Schwartz, 1995)

Sex Indicators: None

Pathological Data: None

Pyre goods: > 10 mm—orange ceramic (charred)
10-5 mm—orange ceramic (charred)

Grave Goods: None

Pyre Debris: None

Identifiable non-human bone: None

Inventory of Finds Bags

> 10 mm:	Cranial (including mandible with tooth root) Unidentified human bones Unidentified human long bones Lower limb: pelvis, femur Upper limb: humerus Ceramic Axial: rib, vertebrae
10-5 mm:	Ceramic Unidentified human bone Axial: rib, vertebrae Cranial Unidentified human long bone
2 mm:	Unidentified human bone Rock and soil
< 2 mm:	Residue and traces of human bone

Burial #: Trentholme Drive 1971.303-bag says 396b, could be 398b	Date: 8/6/06	Observer: Carrie Sulosky
Estimated Sex: ----	Estimated Age: Adult	Estimated MNI: 1

Context: Unknown

Total weight of cremated materials: 397.96 g **Total weight of non-human bone:** 58.89 g

Total weight of cremated human bone: 285.27 g **Dimensions of largest fragment:** 40 x 35.9 mm

Weight fractions: >10mm: 180.99 g 10-5mm: 50 g 5-2mm: 12.34 g 2-1mm: 41.94 g

Colour ranges: White cortical bone (patches of light grey on the tibia); trabecular bone is white with patches of light grey; some trabecular bone is dark grey

Shrinkage: No instances of abnormal shrinkage

Fissuring: No instances of abnormal fissuring

Warping: Warping visible on long bones and skull

Identifiable Fragments Present in Each Sieve Fraction:

Skull: > 10 mm—5 cranial fragments
 10-5 mm—6 cranial fragments

Axial Skeleton: > 10 mm—2 rib fragments, 2 vertebrae fragments

Upper Limb: None

Lower Limb: None

Duplicated elements: None

Age Indicators: Pathology suggests that the individual is an adult

Sex Indicators: None

Pathological Data: > 10 mm—slight lipping (horizontal osteophytes) on vertebral bodies

Pyre goods: None

Grave Goods: None

Pyre Debris: 2 mm—charcoal

Identifiable non-human bone: > 10 mm—cremated pig bone

Inventory of Finds Bags

> 10 mm:	Cranial
	Unidentified human bones
	Unidentified human long bones
	Pig
	Axial: rib, vertebrae
10-5 mm:	Unidentified human bone
	Soil
	Cranial
	Unidentified human long bone
2 mm:	Unidentified human bone
	Charcoal
	Rock and soil
< 2 mm:	Residue and traces of human bone

Trentholme Drive---1971.303 398c

*Melted iron/soil deposit

*Total weight: 65.27 g

Trentholme Drive---1971.303 398d

*Charcoal deposit

*Total weight: 134.11 g

Burial #: Trentholme Drive 1971.303 403	Date: 9/6/06	Observer: Carrie Sulosky
Estimated Sex: M?	Estimated Age: Adult	Estimated MNI: 1

Context: Urned cremation burial

Total weight of cremated materials: 811.32 g **Total weight of non-human bone:** 0.21 g

Total weight of cremated human bone: 740.25 g **Dimensions of largest fragment:** 101 x 29.3 mm

Weight fractions: >10mm: 506.46 g 10-5mm: 162.42 g 5-2mm: 53.89 g 2-1mm: 17.48 g

Colour ranges: Mostly white the whole way through; cortical bone of tibia is white, black, and grey and trabecular bone is black; some long bones have white cortical bone and light grey trabecular bone; some long bones are light grey throughout

Shrinkage: No instances of abnormal shrinkage

Fissuring: No instances of abnormal fissuring

Warping: Warping visible on long bones

Identifiable Fragments Present in Each Sieve Fraction:

Skull: > 10 mm—31 cranial fragments
 10-5 mm—32 cranial fragments, 1 tooth root

Fell out of urn: > 10 mm—11 cranial fragments
 10-5 mm—8 cranial fragments

Axial Skeleton: > 10 mm—1 rib fragment, 22 vertebrae fragments
10-5 mm—7 rib fragments, 6 vertebrae fragments

Fell out of urn: > 10 mm—1 vertebra fragment

Upper Limb: > 10 mm—1 humerus fragment

Lower Limb: > 10 mm—7 femur fragments, 5 tibia fragments, 1 calcaneus, 8 pelvis fragments

Fell out of urn: > 10 mm—2 pelvis fragments

Duplicated elements: None

Age Indicators: Femoral and humeral heads fused—adult

Sex Indicators: Well-developed linea aspera, suggests a possible male

Pathological Data: > 10 mm—slight lipping (horizontal osteophytes) on vertebral bodies
10-5 mm—periostitis on unidentified long bone

Fell out of urn: > 10 mm—periostitis on unidentified long bone

Pyre goods: None

Grave Goods: 10-5 mm—green glass

Pyre Debris: 2 mm—charcoal

Identifiable non-human bone: 10-5 mm—cremated galliform bone
2 mm—unburnt shrew long bone (intrusive)

Inventory of Finds Bags

> 10 mm: Cranial
 Unidentified human bones
 Unidentified human long bones
 Upper limb: humerus
 Lower limb: femur, calcaneus, tibia, pelvis

10-5 mm: Unidentified human bone
 Axial: rib, vertebrae
 Periostitis on unidentified long bone
 Green glass
 Galliform bone
 Cranial, tooth roots
 Unidentified human long bone

2 mm: Unidentified human bone
 Charcoal
 Rock and soil
 Unburnt shrew long bones

< 2 mm: Residue and traces of human bone

Fell out of urn: > 10 mm: Unidentified human long bone
 Cranial
 Unidentified human bone
 Periostitis on unidentified long bone
 Axial: vertebrae
 Lower limb: pelvis

 10-5 mm: Unidentified human bone
 Unidentified human long bone
 Cranial

 2 mm: Rock and soil
 Unidentified human bone

 < 2 mm: Residue and traces of human bone

Burial #: Trentholme Drive 1971.303 432	Date: 12/6/06	Observer: Carrie Sulosky
Estimated Sex: ----	Estimated Age: Mid? Adult	Estimated MNI: 1

Context: Unknown

Total weight of cremated materials: 315.02 g **Total weight of non-human bone:** 1.49 g

Total weight of cremated human bone: 282.45 g **Dimensions of largest fragment:** 89.8 x 17.1 mm

Weight fractions: >10mm: 211.6 g 10-5mm: 52.23 g 5-2mm: 4.59 g 2-1mm: 14.03 g

Colour ranges: White cortical bone, trabecular bone tinged with grey; some patches of light grey cortical bone on one piece of unidentified human bone

Shrinkage: No instances of abnormal shrinkage

Fissuring: No instances of abnormal fissuring

Warping: Warping visible on long bones

Identifiable Fragments Present in Each Sieve Fraction:

Skull: > 10 mm—8 cranial fragments
 10-5 mm—12 cranial fragments

Axial Skeleton: > 10 mm—3 rib fragments, 5 vertebrae fragments
 10-5 mm—6 rib fragments, 5 vertebrae fragments

Upper Limb: > 10 mm—right scapula (glenoid fossa), 1 additional scapula fragment, right distal radius
10-5 mm—1 scapula fragment

Lower Limb: > 10 mm—left talus, right patella, 7 pelvis fragments, 1 left metatarsal 1 (1 shaft, 1 distal epiphysis), 2 fibula fragments

Duplicated elements: None

Age Indicators: > 10 mm—distal radius fused—adult 20-23 years (Schwartz, 1995)

Sex Indicators: None

Pathological Data: > 10 mm—slight lipping (horizontal osteophytes) on vertebral bodies

Pyre goods: None

Grave Goods: None

Pyre Debris: None

Identifiable non-human bone: 10-5 mm—cremated bird bone, unburnt galliform coracoid

Inventory of Finds Bags

> 10 mm:	Cranial Unidentified human bones Unidentified human long bones Lower limb: left MT 1, left talus, fibula, right patella, pelvis Upper limb: humerus, right radius, scapula Axial: rib, vertebrae
10-5 mm:	Unidentified human bone Unburnt galliform coracoid Cremated bird bone Soil Cranial Upper limb: scapula Axial: rib, vertebrae Unidentified human long bone
2 mm:	Unidentified human bone Rock and soil
< 2 mm:	Residue and traces of human bone

Burial #: Trentholme Drive 1971.303 475	Date: 6/6/06	Observer: Carrie Sulosky
Estimated Sex: ----	Estimated Age: ----	Estimated MNI: 1

Context: Unknown

Total weight of cremated materials: 35.4 g **Total weight of non-human bone:** 0 g

Total weight of cremated human bone: 16.15 g **Dimensions of largest fragment:** 28.1 x 12.7 mm

Weight fractions: >10mm: 1.23 g 10-5mm: 2.5 g 5-2mm: 2.76 g 2-1mm: 9.66 g

Colour ranges: White cortical bone with light grey trabecular bone

Shrinkage: No instances of abnormal shrinkage

Fissuring: No instances of abnormal fissuring

Warping: No visible warping

Identifiable Fragments Present in Each Sieve Fraction:

Skull: None

Axial Skeleton: None

Upper Limb: None

Lower Limb: None

Duplicated elements: None

Age Indicators: None

Sex Indicators: None

Pathological Data: None

Pyre goods: > 10 mm—burnt sea shell

Grave Goods: None

Pyre Debris: None

Identifiable non-human bone: None

Inventory of Finds Bags

> 10 mm:	Burnt shell
	Unidentified human bones
10-5 mm:	Unidentified human bone
	Soil
2 mm:	Unidentified human bone
	Soil
< 2 mm:	Residue and traces of human bone

Burial #: Trentholme Drive 1971.303 493	Date: 9/6/06	Observer: Carrie Sulosky
Estimated Sex: ----	Estimated Age: Adult	Estimated MNI: 1

Context: Unknown

Total weight of cremated materials: 290.74 g **Total weight of non-human bone:** 0 g

Total weight of cremated human bone: 279.65 g **Dimensions of largest fragment:** 65.8 x 19.3 mm

Weight fractions: >10mm: 244.1 g 10-5mm: 26.62 g 5-2mm: 3.37 g 2-1mm: 5.56 g

Colour ranges: Most of the bone is white; skull has patches of dark grey cortical and trabecular bone, some vertebrae dark grey throughout; tibiae have white cortical bone and black/dark grey trabecular bone; humeri have light grey cortical bone; some bones have white cortical bone and dark grey trabecular bone

Shrinkage: No instances of abnormal shrinkage

Fissuring: No instances of abnormal fissuring

Warping: Warping visible on long bones

Identifiable Fragments Present in Each Sieve Fraction:

Skull: > 10 mm—19 cranial fragments
 10-5 mm—8 cranial fragments

Axial Skeleton: > 10 mm—3 rib fragments, 5 vertebrae fragments
10-5 mm—2 rib fragments, 2 vertebrae fragments

Upper Limb: > 10 mm—4 humerus fragments

Lower Limb: > 10 mm—3 tibia fragments, 5 pelvis fragments, 5 femur fragments
10-5 mm—1 pelvis fragment

Duplicated elements: None

Age Indicators: All vertebrae fused—adult 20+ years (Schwartz, 1995)

Sex Indicators: None

Pathological Data: > 10 mm—slight lipping (horizontal osteophytes) on vertebral bodies

Pyre goods: None

Grave Goods: None

Pyre Debris: 10-5 mm—slag

Identifiable non-human bone: None

Inventory of Finds Bags

> 10 mm:	Cranial
	Unidentified human bones
	Unidentified human long bones
	Upper limb: humerus
	Lower limb: tibia, femur, pelvis
	Axial: rib, vertebrae
10-5 mm:	Unidentified human bone
	Soil
	Cranial
	Slag
	Lower limb: pelvis
	Axial: rib, vertebrae
2 mm:	Unidentified human long bone
	Soil
< 2 mm:	Residue and traces of human bone

Burial #: Trentholme Drive 1971.303 523	Date: 5/6/06	Observer: Carrie Sulosky
Estimated Sex: ----	Estimated Age: -----	Estimated MNI: 1

Context: Unurned cremation burial

Total weight of cremated materials: 86.28 g **Total weight of non-human bone:** 0 g

Total weight of cremated human bone: 84.22 g **Dimensions of largest fragment:** 24.2 x 22.8 mm

Weight fractions: >10mm: 37.34 g 10-5mm: 32.84 g 5-2mm: 4.3 g 2-1mm: 9.74 g

Colour ranges: White cortical bone with patches of light grey; dark grey trabecular bone

Shrinkage: No instances of abnormal shrinkage

Fissuring: No instances of abnormal fissuring

Warping: Warping visible on skull

Identifiable Fragments Present in Each Sieve Fraction:

Skull: > 10 mm—3 cranial fragments
 10-5 mm—9 cranial fragments

Axial Skeleton: > 10 mm—4 rib fragments, 2 vertebrae fragments
 10-5 mm—12 rib fragments, 3 vertebrae fragments

Upper Limb: None

Lower Limb: > 10 mm—5 pelvis fragments

Duplicated elements: None

Age Indicators: None

Sex Indicators: None

Pathological Data: None

Pyre goods: None

Grave Goods: None

Pyre Debris: None

Identifiable non-human bone: None

Inventory of Finds Bags

> 10 mm:	Cranial
	Unidentified human bones
	Unidentified human long bones
	Lower limb: pelvis
	Axial: rib, vertebrae
10-5 mm:	Unidentified human bone
	Soil
	Cranial
	Axial: rib, vertebrae
	Unidentified human long bone
2 mm:	Unidentified human bone
	Soil
< 2 mm:	Residue and traces of human bone

Burial #: Trentholme Drive 1971.303 552	Date: 7/6/06	Observer: Carrie Sulosky
Estimated Sex: ----	Estimated Age: Adult	Estimated MNI: 1

Context: Unknown

Total weight of cremated materials: 463.18 g **Total weight of non-human bone:** 0 g

Total weight of cremated human bone: 441.35 g **Dimensions of largest fragment:** 72.9 x 44.7 mm

Weight fractions: >10mm: 280.34 g 10-5mm: 70.93 g 5-2mm: 18.57 g 2-1mm: 71.51 g

Colour ranges: Most of the bone has white cortical bone and dark grey trabecular bone; some bone completely white throughout (skull, vertebrae, fibula, humerus, ulna); some patches of dark grey cortical bone (fibula, pelvis, femur, tibia)

Shrinkage: 1 part of the humerus not as shrunken as the rest—from the opposite arm?

Fissuring: No instances of abnormal fissuring

Warping: Warping visible on long bones and skull

Identifiable Fragments Present in Each Sieve Fraction:

Skull: > 10 mm—10 cranial fragments
 10-5 mm—9 cranial fragments

Axial Skeleton: > 10 mm—2 rib fragments, 15 vertebrae fragments
 10-5 mm—4 rib fragments, 1 vertebra fragment

Upper Limb: > 10 mm—6 humerus fragments, 1 ulna fragment

Lower Limb: > 10 mm—3 tibia fragments, 1 fibula fragment, 3 femur fragments, 4 pelvis fragments

Duplicated elements: None

Age Indicators: Fully fused vertebrae—adult 20+ years (Schwartz, 1995)

Sex Indicators: None

Pathological Data: None

Pyre goods: 10-5 mm—burnt/black mortar

Grave Goods: 10-5 mm—ceramic, black outside, red inside

Pyre Debris: None

Identifiable non-human bone: None

Inventory of Finds Bags

> 10 mm:	Cranial
	Unidentified human bones
	Unidentified human long bones
	Soil
	Upper limb: humerus, ulna
	Lower limb: pelvis, tibia, femur, fibula
	Axial: rib, vertebrae
10-5 mm:	Unidentified human bone
	Soil
	Ceramic
	Black/burnt mortar
	Cranial
	Axial: rib, vertebrae
	Unidentified human long bone
2 mm:	Unidentified human bone
	Rock and soil
< 2 mm:	Residue and traces of human bone

Bibliography

- Bass, W. M. 2005. *Human Osteology: A Laboratory and Field Manual*, 5th edition. Columbia, Missouri Archaeological Society.
- Brooks, S. and Suchey, J. M. 1990. Skeletal age determination based on the os coxae pubis: A comparison of the Acsádi-Nemeskéri and Suchey-Brooks methods. *Human Evolution* 5:227-238. (Used in conjunction with casts produced by France Casting).
- Lovejoy, C. O., Meindl, R. S., Pryzbeck, T. R. and Mensforth, R. P. 1985. Chronological metamorphosis of the auricular surface of the ilium: A new method for the determination of adult skeletal age at death. *American Journal of Physical Anthropology* 68:15-28.
- Meindl, R. S. and Lovejoy, C. O. 1985. Ectocranial closure: A revised method for the determination of skeletal age at death based on the lateral-anterior sutures. *American Journal of Physical Anthropology* 68:57-66.
- McKinley, J. I. 1993. Bone fragment size and weights of bone from modern British cremations and the implications for the interpretation of archaeological cremations. *International Journal of Osteoarchaeology* 3:283-287.
- McKinley, J. I. 1994a. A pyre and grave goods in British cremation burials: have we missed something? *Antiquity* 68:132-134.
- McKinley, J. I. 1994b. Bone fragment size in British cremation burials and its implications for pyre technology and ritual. *Journal of Archaeological Science* 21: 339-342.
- McKinley, J. I. 2004a. Compiling a skeletal inventory: cremated human bone. In Brickley, M. and McKinley, J. I. (eds.) *Guidelines to the Standards for Recording Human Remains*. Southampton and Reading, British Association for Biological Anthropology and Osteoarchaeology and Institute for Field Archaeologists, pp. 9-13.
- McKinley, J. I. 2004b. The human remains and aspects of pyre technology and cremation rituals. In Cool, H. (ed.) *The Roman cemetery at Brougham, Cumbria*. Britannia Monograph 2, pp. 283-310.
- McKinley, J. I. and Bond, J. M. 2001. Cremated bone. In Brothwell, D. R. and Pollard, A. M. (eds.) *Handbook of Archaeological Sciences*. West Sussex, John Wiley & Sons. Ltd., pp. 281-292.
- Morrison, A. Personal communication regarding origins of cremation burials in the care of Yorkshire Museum and Gardens—5/06.

- Ottaway, P. 2004. *Roman York*. Stroud, Tempus Publishing Ltd.
- Roberts, C. and Cox, M. 2003. *Health and Disease in Britain: From Prehistory to the Present Day*. Phoenix Mill, Sutton Publishing Limited.
- Schwartz, J. H. 1995. *Skeleton Keys: An Introduction to Human Skeletal Morphology, Development, and Analysis*. New York, Oxford University Press.
- Smith, B. H. 1991. Standards of human tooth formation and dental age assessment. In Kelly, M. A. and Larson, C. S. (eds.) *Advances in Dental Anthropology*. New York, Wiley-Liss, pp. 143-168.
- Thompson, T. 2002. The assessment of sex in cremated individuals: some cautionary notes. *Canada Society of Forensic Science Journal* 35:49-56.