

Partnering Globally to Achieve Better Outcomes Locally

This project highlights the ways in which universities can mobilize global partnerships and international networks to achieve better outcomes for hyper-local (neighborhood) projects.

Moderator:

Garrett Margliotti, Director of Partnerships, University of Pittsburgh

Panelists:

Sabina Deitrick, GSPIA, Pitt

Danielle Davis, Founder and President, Davis Consulting Solutions

Heidi Ann Ward, Office of Engagement & Community Affairs, Pitt

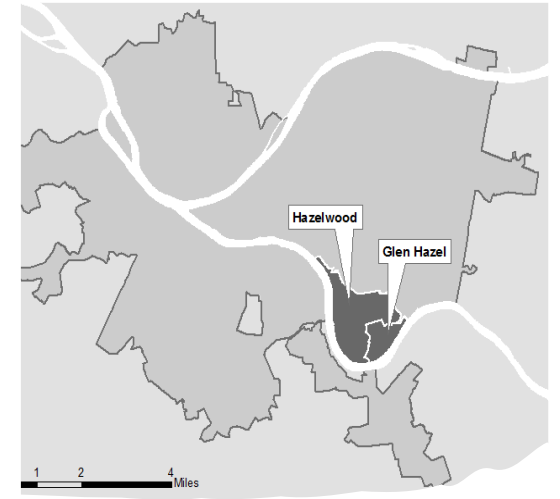
Louise Kempton, Newcastle University (UK)

Part 1

University of Pittsburgh and Newcastle University Inclusive Innovation Districts Part 1: Hazelwood

Panel: Partnering Globally to Achieve Better Outcomes Locally

Sabina Deitrick and Michael Glass
University of Pittsburgh
March 5, 2024



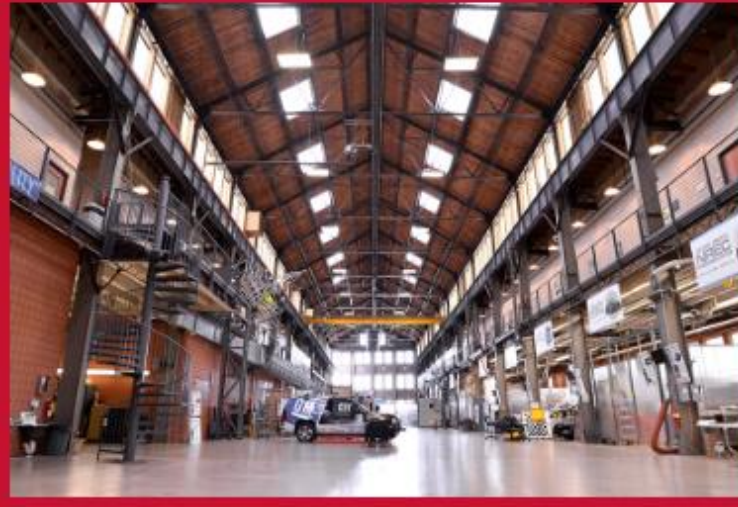


From Research Parks to Technopoles to Innovation Districts

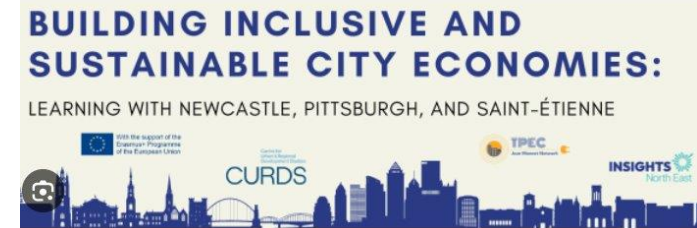
“(T)he Pittsburgh region’s future depends to such a major extent upon retaining and attracting highly qualified and professional technical people and business enterprisers, who are in demand everywhere and who command a high standard of residential amenity and cultural and professional opportunities.”

Edgar Hoover, Ben Chinitz, University of Pittsburgh (Economic Study of the Pittsburgh Region), 1964

Transformational Impact



Background and Context – Inclusive Innovation



Our community has been underserved for generations. We’ve faced unemployment, low wages, loss of local businesses, poor housing, limited choices for education and healthcare and significant loss of young lives. But through our Neighborhood Plan we are turning a corner and presenting a plan to address all of these challenges and more.

Greater Hazelwood Neighborhood Plan, 2018



Inclusive Innovation Workshop

Sept. 13, 2023



Economic development should include training, incubation and support opportunities for existing residents and business owners.



Part 2

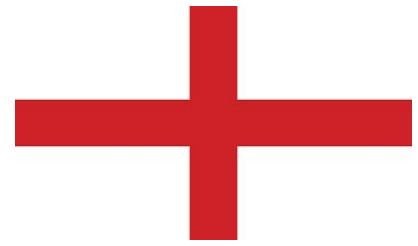


Pittsburgh, PA > London, England > Newcastle upon Tyne

Heidi Ward: Director of Planning
for Community and Life Sciences

Dr. Danielle Davis: President
of Davis Consulting Solutions

Summary



OVERVIEW

- **Project:** Community and life sciences opportunities in Greater Hazelwood.
- **Site Visit:** A component of our project's landscape analysis.
- **Team:** Six dedicated delegates
- **Dates:** 9/10 - 9/17, 2023
- **Goal:** To participate in academic and cultural exchanges - a catalyst for inspiration!

CHAMPIONS

- **Funding:** The Heinz Endowments
- **Project Lead:** The Office of Engagement and Community Affairs
- **Delegates:** Staff & Community Leaders
- **Pitt Partners:** University Center for International Studies (UCIS) and the Dietrich School of Arts & Sciences – Urban Studies
- **Abroad Partners:** Newcastle University – Institute for Social Science + more!

London Highlights



London Highlights

- **Somers Town Community Association**
 - Community café, job hub, volunteering programs, youth club
- **The Living Centre**
 - The philanthropic extension of The Francis Crick Institute
 - Career counseling, nutritional guidance, counseling, community advice
- **The Francis Crick**
 - A leading biomedical discovery institute
 - Community engagement team with programs and exhibitions
- **People's Museum**
 - A space to preserve local voice and the area

Newcastle Highlights



Newcastle Highlights

- **Newcastle Helix**

- A 24-acre, hybrid city quarter in the centre of Newcastle.
- The site was previously a brewery. Now being revitalized for international tech and science businesses, the local community and residents.

- **Newcastle, U.K. Community Based Organizations**

- Children North East, Tyne & Wear Citizens (UK), West End Schools' Trust
- Newcastle University

- **Newcastle City Council**

- Priorities: poverty, cost of living crisis, net zero carbon

- **Newcastle United Football Club - Newcastle**

- A community hub that provides sporting activities and facilities.

Testimonials



HEIDI WARD, M.B.A

“I truly believe that travelers seek bridges, not walls. This site visit allowed us to lean into this guiding principle as we persist in our exploration of community and life sciences opportunities.”

DR. DANIELLE DAVIS

“I want to start off by saying the opportunity to join you on this trip was life-changing...I saw myself in so many of the individuals that we met and now being able to provide this same level of support keeps me humbled.”



Part 3

The i³o Project - Improving Innovation Inclusion Outcomes


An emerging global network?

Louise Kempton

Centre for Urban and Regional Development Studies
& Insights North East

Newcastle University

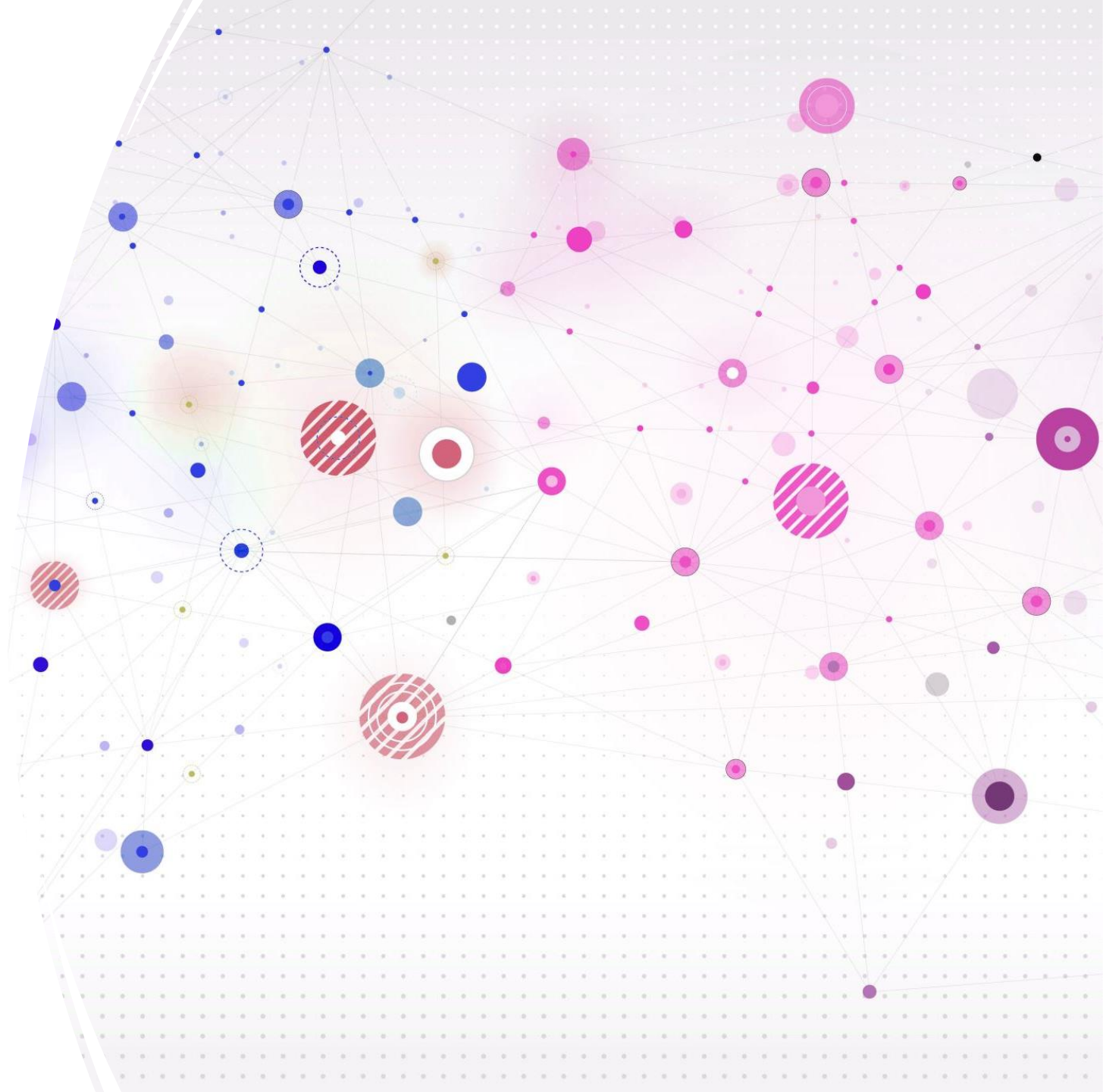


An aerial, high-angle photograph of a city street, likely in an urban area. The street is paved and has a white crosswalk. A large white sign on the street reads "SCHOOL" in reverse. Several vehicles, including a white van and a white truck, are visible on the street. The buildings are multi-story, with brick and stone facades. The lighting is warm, suggesting late afternoon or early morning. The text is overlaid on the left side of the image, partially obscuring the buildings.

Led by Newcastle University and the University of Pittsburgh, i³o is an emerging Global partnership that explores how non-capital cities that have experienced social or economic crises (de-industrialisation, conflict, natural disaster etc.) are using innovation to reinvent themselves, through the lens of the UN's Sustainable Development Goals (SDGs).

What we are especially interested in is how these innovation initiatives can be designed and delivered to maximise benefits for local people, businesses and communities and minimise the increased social and economic disparities that research shows are too often the outcome from these investments.

Where it all began







Newcastle
helix

Newcastle
University

Liberty
Living

THE PEOPLE'S KITCHEN



TOTAL
Fuel Management
0191 453 3206





Newcastle
helix
Newcastle
helix



Newcastle
University



Liberty
Living

THE FOLKES KITCHEN

EVERY
ONE



RA05 EAG

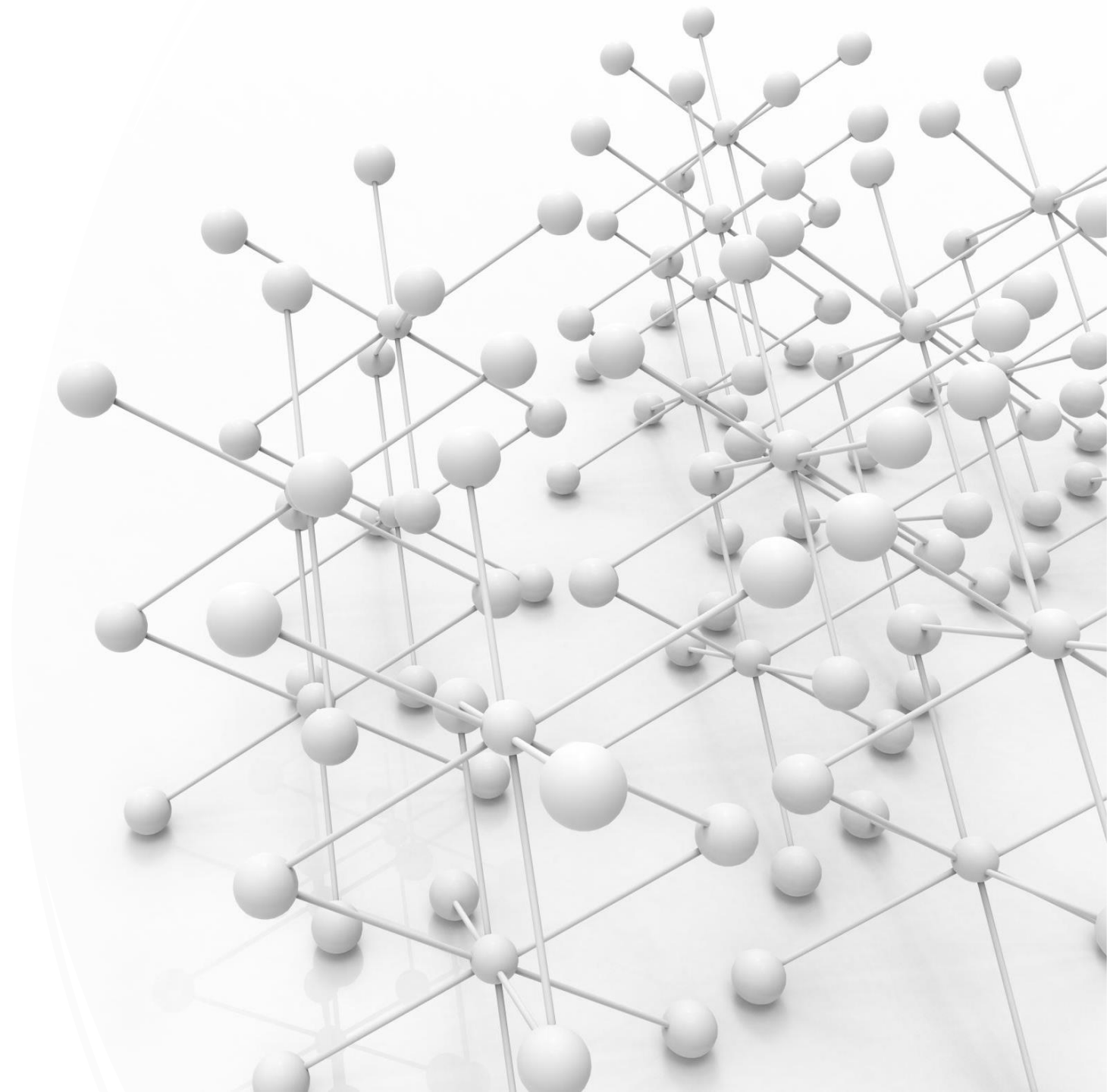


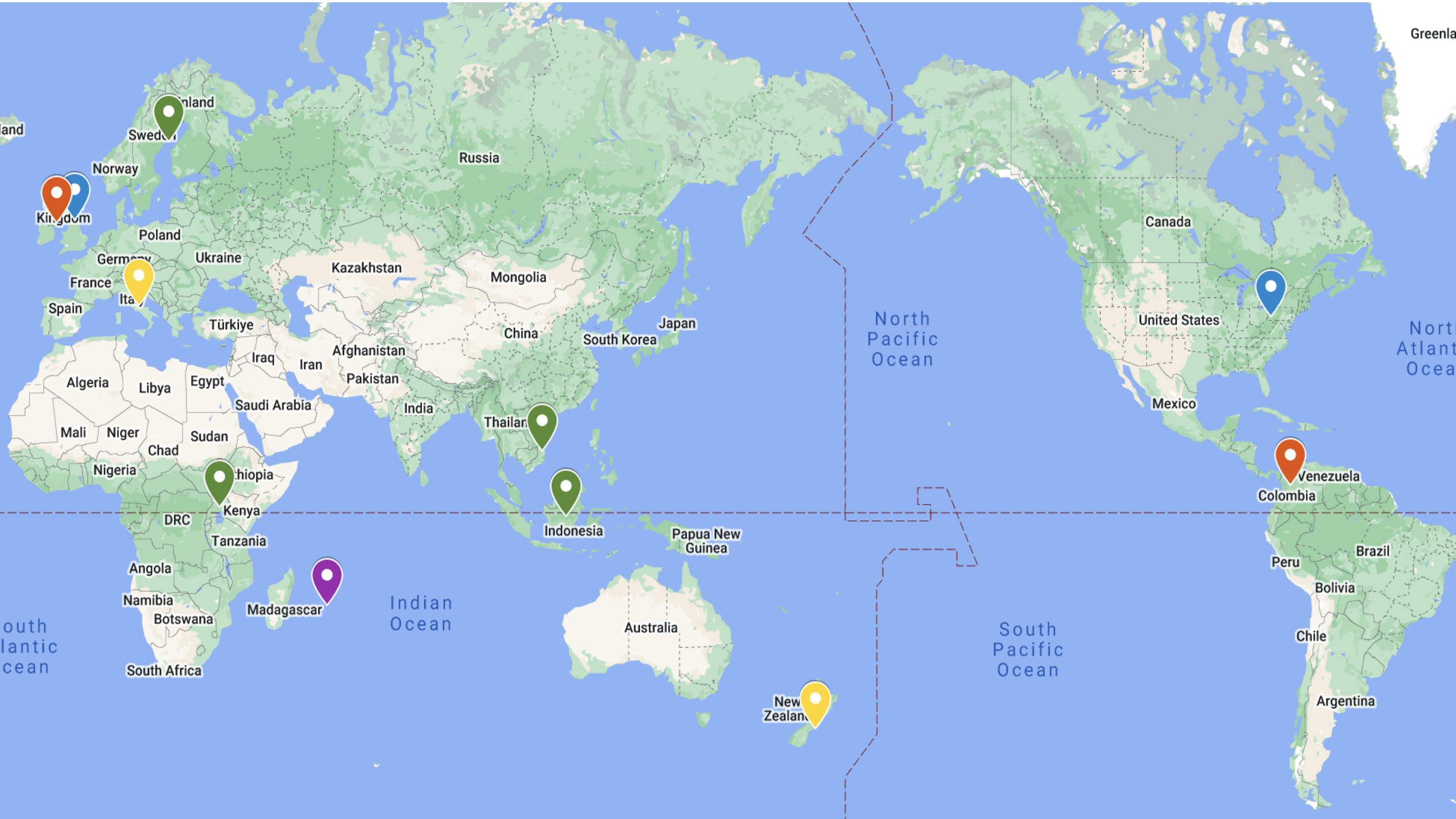
TOTAL

TOTAL



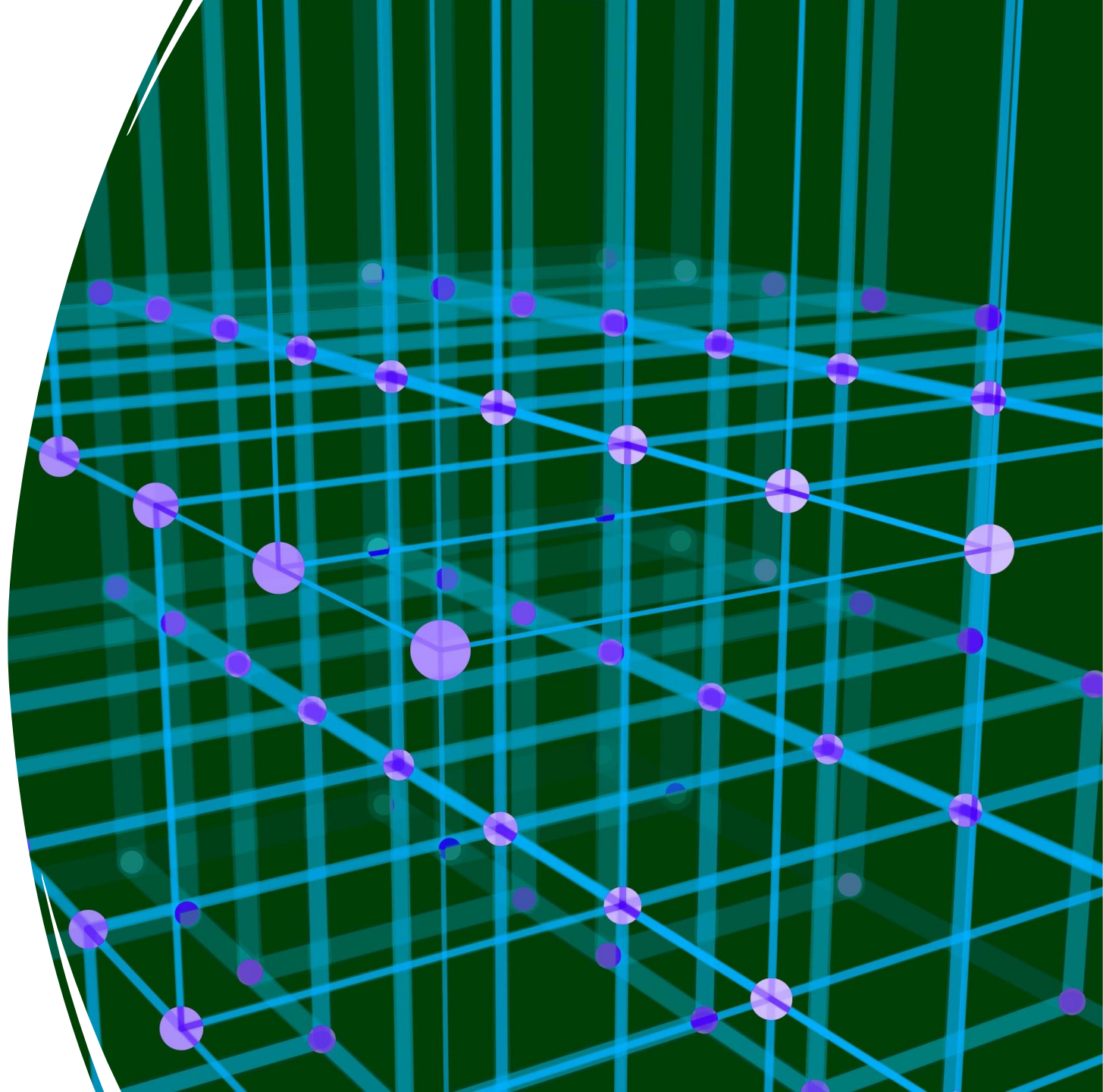
The (expanding) network





THEME	LOCATIONS	STATUS
Innovation in Post-Industrial Cities	1 Newcastle Helix 2 Hazelwood Green	Completed
Innovation Post Conflict	3 Ruta-N, Medellin 4 Belfast Innovation City	Scoping visits in Dec 23 (Medellin) and Mar 24 (Belfast); Research visits in May (Medellin) and Autumn (Belfast)
Innovation in Rural Economies	5 Sweden 6 Uganda/Indonesia/Vietnam	Subject to further funding
Innovation Post Natural Disaster	7 L'Aquila (IT) 8 Christchurch (NZ)	Subject to further funding
Innovation in Island Economies	9 Mauritius 10 West Indies	Subject to further funding

Methodology





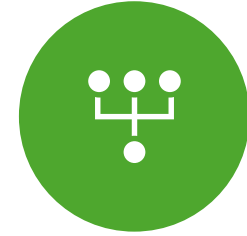
A short scoping visit to the place being researched to identify key role players in the design and delivery of the particular innovation district and to understand the local context.



Following the scoping visit a wide range of relevant publications (policies, strategies, investment plans as well as any academic research) are reviewed, and interim meetings with contacts made on the scoping visit are held.



Once this is complete (3-6 months after the initial visit) a research visit takes place. 4-6 researchers from the team travel to the study site to conduct bilateral, semi-structured interviews with local role players.



At the end of the visit a multi-lateral roundtable event is held to sense check initial findings and to surface key areas of tension and consensus.

Outputs and Outcomes





For each research visit a 'scene-setting' document is prepared in advance.



Following the visit the proceedings of the roundtable is produced and a detailed report outlining the findings from the research.



We also produce a short briefing aimed at local policy makers focusing on actionable insights from the study.



Membership of an international network including researchers, policy makers, practitioners in place-based innovation



A commissioned book aimed at policymakers



Numerous modest grant successes from internal and external sources (\$100,000+)



Significant interest from a range of local, national and international policy makers (including OECD)



Presentations at various national and international conferences (e.g. special session at RSA annual conference)



3 major grant applications in progress (total value \$2-3m)



Academic publications

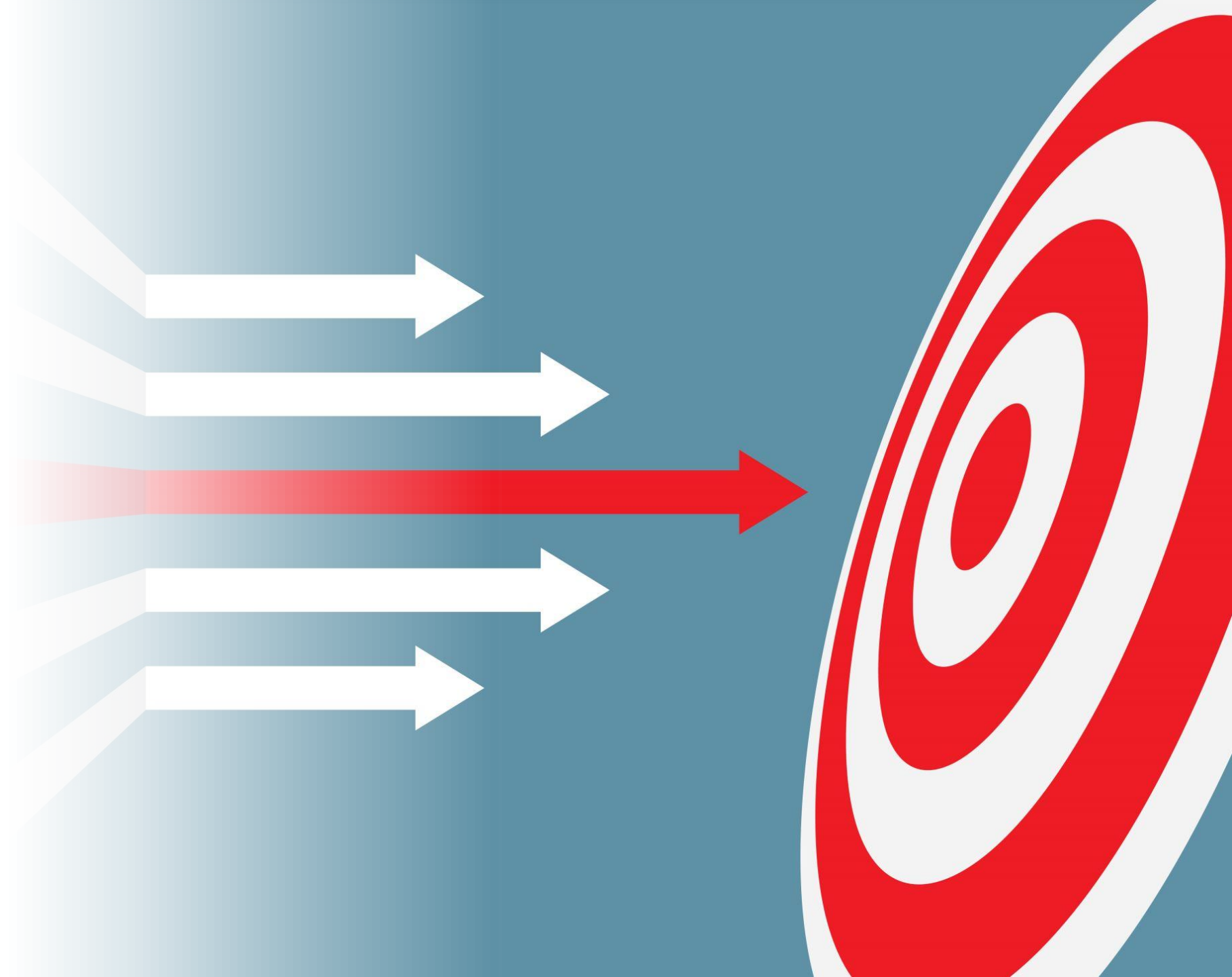


Developing teaching/CPD modules



PGR student and ECR involvement

Potential
impact?





Newcastle and Pittsburgh (the universities and the places) are established as global leaders in research, policy and practice on an important area of growing policy and academic interest

Strategic
questions





Is this a collaboration between researchers (and other actors) in both places with a mutual interest?

Or part of a bigger, strategic partnership between two institutions and their place?

If the latter, what does this mean in terms of institutional support (capacity and resource) and longer term commitment?

Thanks for
listening!

louise.kempton@newcastle.ac.uk

