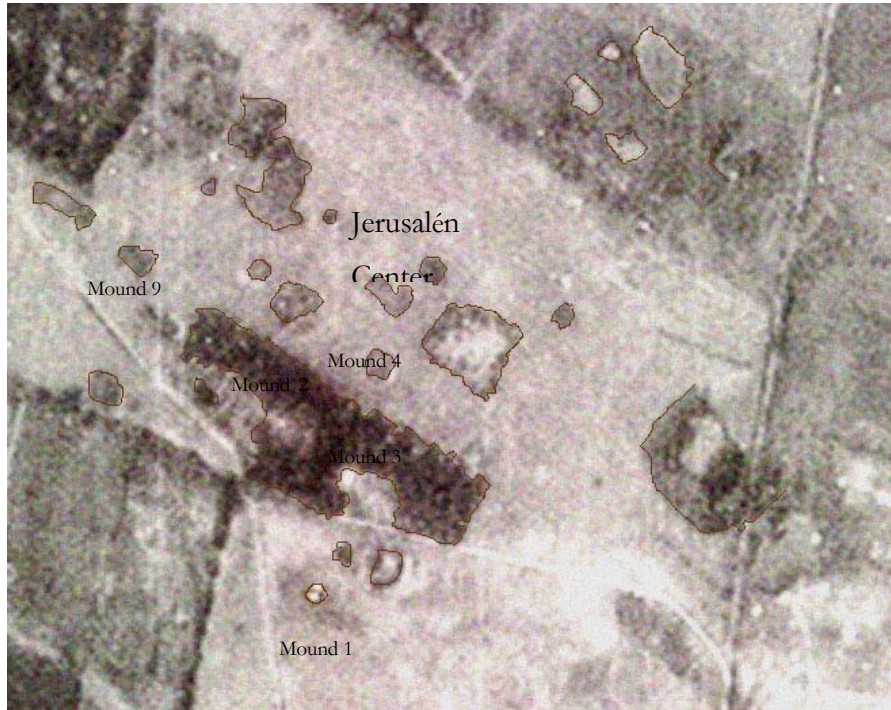


## Appendix C: Photographs



**Figure 1 Aerial view of Jerusalén core**



**Figure 2 Mounds 2 and 3 of Jerusalén Site**



**Figure 3 Iguano Macho Mound**



**Figure 4 Raised Field Profile**



**Figure 5 Mound J9 During Excavation**



**Figure 6 Public Mounds (1 and 2 ) and Domstic Mounds (J9)**



**Figure 7 Vuelta Larga Mound, Prior Excavation**



**Figure 8 General View of the Excavation of VL-T1**



**Figure 9 Cranium with Offerings**



**Figure 11 Burial Found in Flexed Position**



**Figure 12 Chimney Tomb, VL-T1**



**Figure 13 Section View of a Chimney Tomb**



**Figure 14 General View of Burials at Vuelta Larga Mound 1**





**Figure 15 Noserings Found as Offerings**



**Figure 16 Cooper-Arsenic Alloyed Tweezers Found as Burial Offerings**



**Figure 17 Spindle Whorls Found in Vuelta Larga Mound**

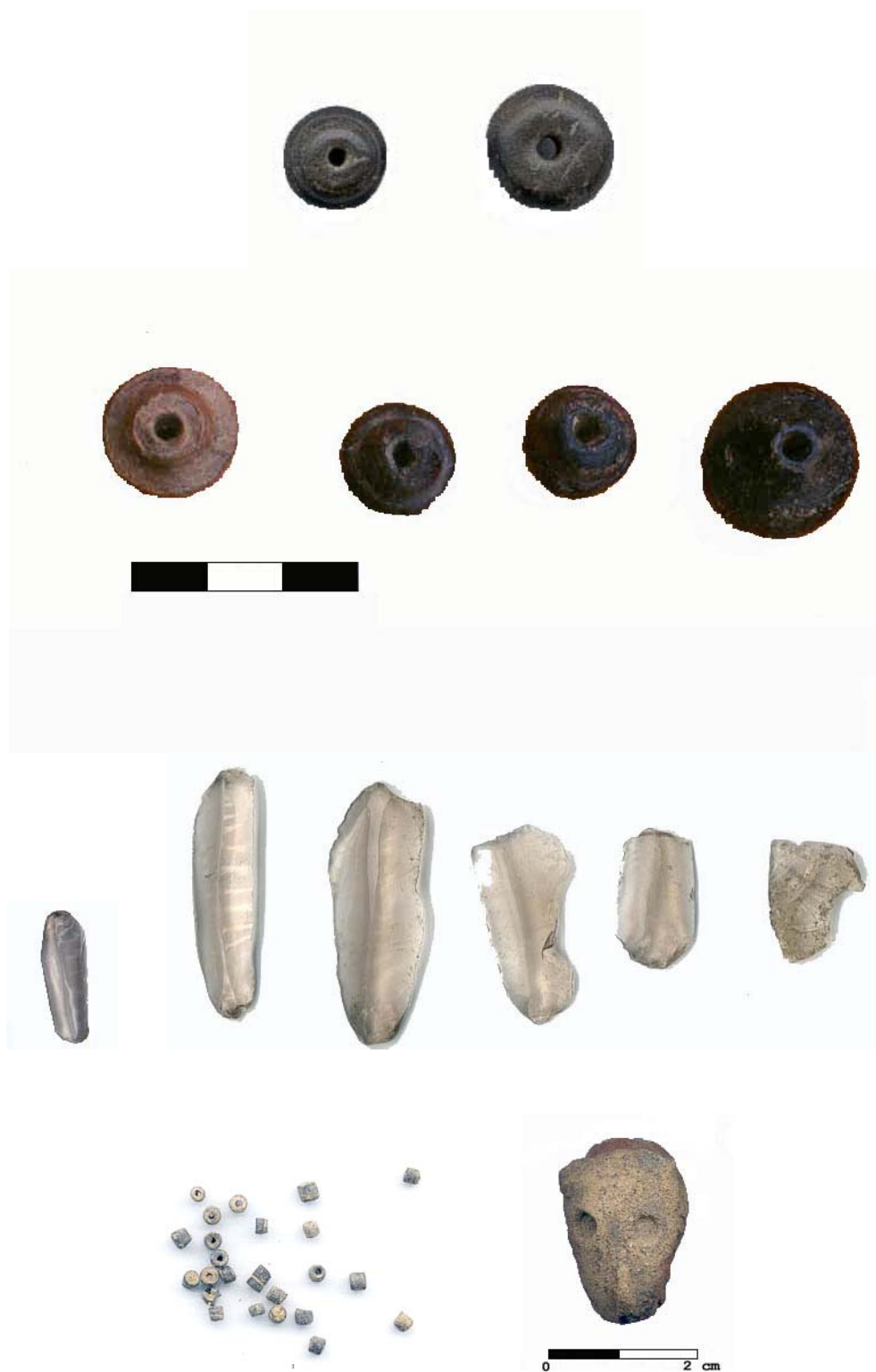


Figure 18 Obsidian Blades, Ceramic and Shell Beads, and a Zoomorphic Head Found at J9 Mound